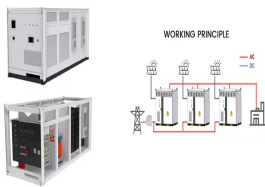
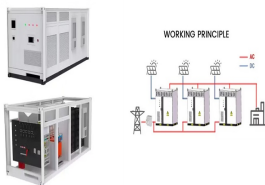


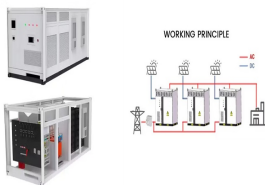
COMMUNITY PHOTOVOLTAIC PANEL CONSULTATION



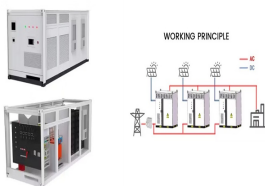
What are the findings from Stage 1 community consultation? On 24 October 2024, we published the findings from Stage One community consultation. The Consultation Summary Report outlines the key themes raised in feedback to initial consultation on our proposals, and explains how this, along with the outcome from environmental assessments, is being used to develop and refine our design for the project.



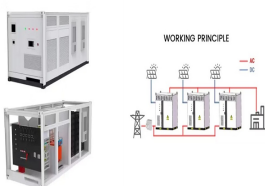
How will Melksham solar park work? The electricity generated by the proposed solar park would be exported via an underground cable connection into the existing national electricity transmission system at Melksham substation. The project is anticipated as being able to deliver up to 500 megawatts (MW) of renewable electricity through ground-mounted solar photovoltaic (PV panels).



What is the consultation process? The consultation process involves looking at your energy bills (gas and electricity bills), finding a better deal if possible (for your energy usage), looking at the renewables products which are appropriate for your needs. How long does the consultation process take?



Is Frodsham solar a nationally significant infrastructure project (NSIP)? As the generation capacity for Frodsham Solar is above 50 MW, the project is classed as a Nationally Significant Infrastructure Project (NSIP) given the amount of low-carbon electricity that the project will be able to generate. If the project is granted consent, it will be given a Development Consent Order (DCO).

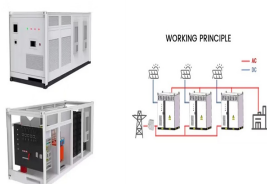


How can I Fund Wedmore First School's solar panels? It covers: Pupils, parents and staff helped to raise over ?45,000 to fund Wedmore First School's solar panels. Start by contacting your local council to see if they offer any local grant funding schemes for your proposed measures. If your area has a Local Action Group or a Rural Community Council, they may also have a small grants scheme.

COMMUNITY PHOTOVOLTAIC PANEL CONSULTATION



Could lime down solar park be a NSIP project? Lime Down could make a vital contribution to achieving these targets by ensuring the supply of clean,affordable electricity to UK consumers when it??s needed. The amount of electricity Lime Down Solar Park could generate is exceeds 50MW. It is therefore classed as a Nationally Significant Infrastructure Project(NSIP).



Get a free consultation. UK's premier provider of solar panel installations, maintenance, and repairs. Experience efficiency and sustainability. Get a free consultation. National Lottery Community Fund Solar Panel Grants. Are you ???



Following the completion of the community consultation for the 23MWp ground-mounted solar scheme near Attleborough, 15 miles south-west of Norwich, Norfolk, the company is submitting planning permission. The site will use bi-facial panels ??? with PACE pointing to a 9% uplift in electricity production compared to traditional PV technologies



Community energy projects involve groups of people coming together to purchase, manage, generate, or reduce consumption of energy. This includes (but is not limited to), solar panels, wind



Background A novel project sustainability framework is used to evaluate 65 off-grid solar photovoltaic (PV) energy system projects in Malawi. This study addresses PV projects serving rural public

COMMUNITY PHOTOVOLTAIC PANEL CONSULTATION



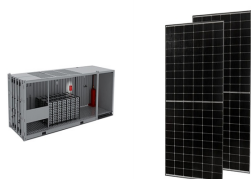
Rural Community Energy Fund has funding available to help community groups in rural areas across Yorkshire to develop renewable energy projects. YES energy solutions is a community interest company with experience of working with public sector and local business and offer a free survey and quote service.



How does the consultation work? The consultation process involves looking at your energy bills (gas and electricity bills), finding a better deal if possible (for your energy usage), looking at the renewables products which are appropriate ???



When you apply for planning permission, your neighbours may object to your solar panel plans. During the public consultation process of your application, anyone can raise concerns about how your solar panels might affect the neighbourhood appearance, their property, or even their light access.



Commercial Solar Panel FAQ with some of the most common frequently asked questions about commercial solar panels to help you make an informed decision. Most businesses and community buildings can install solar panels without planning permission, as long as they follow some rules. you can book a free consultation and survey with us at



Known as Stonestreet Green Solar, the project will generate renewable energy through solar photovoltaic (PV) panels, providing clean power to UK businesses, infrastructure and homes. Stonestreet Green Solar will have an export capacity of up to 99.9MW and produce enough renewable energy to power almost 42,000 homes and save over 34,000 tonnes of carbon from ???

COMMUNITY PHOTOVOLTAIC PANEL CONSULTATION



4.2.1 At the non-statutory consultation, we asked for people's views and feedback on: ??? The overall project. ??? The proposed location of the project including solar panel array areas. ??? The two cable corridor options identified to enable the energy park to connect to the National Grid transmission system. (At this stage,



Our consultation procedure is set out in our . Statement of Community Involvement. Please note: The guidance within this Supplementary Planning Document is for free-standing solar photovoltaic (PV) systems falling outside permitted development rights, currently defined as having an area larger than 9 square metres.



Looking for the best solar panel installation and battery storage solution for your home or business? Discover how solar energy can drastically reduce your energy bills and carbon footprint. Benefit from local expert advice and a FREE custom solar panel system design tailored to your specific needs. Contact our renewable energy experts today on 01628 533 550 and ???



Endurance Energy has actively undertaken consultation with the local community and this feedback from all consultation undertaken since 2021 has helped to shape the proposals for the new Uttlesford application. Key change made to the scheme include: Solar panel are made out of photovoltaic cells, when light hits these cells an electric



the WEEE consultation is for photovoltaic panels to be removed from the scope of the WEEE regulations on the characteristics and application of the technology itself. Instead, we propose for a separate Extended Producer Responsibility legislative framework to be developed for ALL Renewable Energy Equipment (REE).

COMMUNITY PHOTOVOLTAIC PANEL CONSULTATION



We're proud to have joined a community that is The best part of this whole solar design process is it is absolutely 100% free! The custom solar panel design also includes a solar proposal that outlines projected lifetime savings, pricing, financing options, and solar incentives. consultation, design, permitting, installation



Cleve Hill Solar Park Ltd is constructing a solar and energy storage park on the north Kent coast. Cleve Hill Solar Park will generate renewable power through photovoltaic panels, providing clean power to thousands of UK homes. ???



The solar panel tables will be arranged in either a south facing fixed configuration or a single axis tracker configuration. In a south facing configuration, the tables would be aligned east to west with the panels sloping towards the south, at a fixed angle of 5 to 45 degrees from horizontal. The panels will therefore move from east to west



The main elements of the solar park would include: Solar photovoltaic panels and ground-mounting structures: panels are positioned directly on the ground to convert the sun's energy into electricity that will then be exported to the grid via an underground cable. We anticipate using a combination of fixed and tracker panels.



Solar photovoltaic (PV) panels Longfield Solar Farm will use ground mounted PV panel arrays to generate electricity from the sun. Solar PV is a clean technology. Once set up the panels make use of sunlight to generate electricity. To manage the electricity generated by the panels, our proposals will require localised cabling and solar

COMMUNITY PHOTOVOLTAIC PANEL CONSULTATION



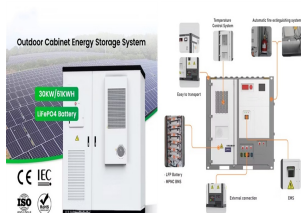
1. Solar photovoltaic (PV) panels ??? Ground-mounted solar panels would collect energy from sunlight and turn it into electricity in the form of low voltage, direct current (DC). 2. On-site cabling ??? Underground cables would connect the solar PV panels to other parts of the solar farm. 3. Solar stations ??? These stations would prepare



Community consultation meetings with community representatives and individuals start. May 2021. Berryhill Solar Farm will generate clean, renewable energy through photovoltaic (PV) solar panels. It will comprise around 152,000 ???



Solar photovoltaic panels and ground-mounting structures: panels are positioned directly on the ground to convert the sun's energy into electricity that will then be exported to the grid via an underground cable. We anticipate using a ???

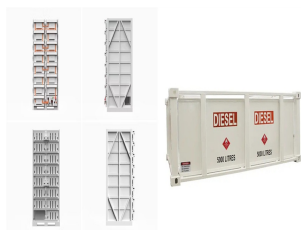


What sets us apart from other solar panel installation companies is our focus on sustainability, quality, and customer satisfaction. Ameco Solar has been at the forefront of providing quality solar panel services, helping thousands of homes and businesses save on their energy bills while reducing their carbon footprint.



Multi-disciplinary support. With international skills hubs and proven multi-disciplinary collaboration in all sectors ??? from advisory & planning and infrastructure development to design implementation ??? Sweco can also advise on and review the electrical, and civil design of solar power projects, utilising a risk and cost-based approach from renewable power generation to energy storage ???

COMMUNITY PHOTOVOLTAIC PANEL CONSULTATION



The project will span around 110 acres, featuring ground-mounted solar photovoltaic (PV) panels and an energy storage facility, with an estimated operational lifetime of 40 years. Public Consultation Initial consultation has been undertaken by Elgin Energy through engagement with Torfaen County Borough Council and residents living close to the proposed development.



Solar PV (photovoltaic) panels. Solar PV panel cells convert sunlight into electricity, even on a cloudy day. They utilise free energy from the sun to generate electricity through the use of photovoltaic cells within roof-mounted modules known as solar panels. The panels are simple to install with the minimum of fuss in most cases.



Our Document Library contains all of the consultation documents and information produced as part of our Phase Two consultation, including the full Preliminary Environmental Information Report (PEIR) ??? which we are consulting on during ???



sonnenBatterie is the perfect battery storage system which complements existing or new photovoltaic (PV) panels. Combined you can increase your self-consumption by up to 75%, comparably to only 30% with solar panels alone. With sonnenBatterie you take your energy independence into your own hands and join a community of pioneers around the



Initial consultation has been undertaken by Elgin Energy through engagement with Aberdeenshire Council and residents living close to the proposed development. we are providing information to the wider community and seeking feedback to inform the project design. of ground mounted solar photovoltaic (PV) panels." Elgin Energy would like

COMMUNITY PHOTOVOLTAIC PANEL CONSULTATION



We offer a FREE 15 minute telephone consultation at a time that works for you. We provide a FREE on-site assessment and then email you a no-obligation quotation. We deliver seamless solar panel installation that will save you money regardless of property size.