

CZECHIA ENERY S R O



the company B O R s.r.o. Choce?? has been acting on the market with agricultural commodities. Its activities rely not only on the experience gained during own activities in the agricultural sector, but also on the strong background of its parent companies: in Germany it is one of the biggest and most important companies on the local agricultural market ??? the ???



D?ky spolupr?ci s p??edn?m v?voj??em softwaru v oblasti EMS (syst?m ???zen? spot??eby energie) vyu? 3/4 ?v?me osv??d??en?, testovan? a otev??en? softwarov? bal??ek. Tento software, kter? tvo??? j?dro energetick?ho ??e??en? M-TEC, ???d? a ???



United Energy, a.s. - tepl?rna Komo??any - V?m??na n?tokov?ho potrub? k v??? 3/4 i CHV5" Spole??nost SP Power s.r.o. p??sob? na trhu od roku 2009 a zam????uje se na realizace projekt?? v oblasti energetiky, p??edev??m v oblasti mechanick?ch mont?? 3/4 ? v??ech tlakov?ch a netlakov?ch ???st? kotl?? a souvisej?c?ch za??zen?



It operates in the All Other Chemical Product and Preparation Manufacturing industry. It was established on May 29, 2000. 100 - 199 (2023) employees currently work for Euro Support Manufacturing Czechia, S.R.O.. In 2023, Euro Support Manufacturing Czechia, S.R.O.'s net profit margin decreased by 0.95%.



Company profile for solar component seller and installer SOLSOL s.r.o. ??? showing the company's contact details and offerings. Growatt New Energy Hybrid; MOD 10-15KTL3-X Growatt New Energy On-Grid; ET Series 15-30kW GoodWe On-Grid; ET Series GoodWe Hybrid; ET PLUS+ (16A) GoodWe Hybrid;

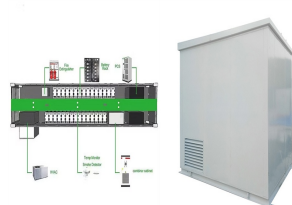
CZECHIA ENERGY S R O



Našimi domácnostmi jsou stavby, rekonstrukce a modernizace plynových kotlen v bytových domech nebo jejich kombinace s obnovitelnými zdroji energie – tepelné čerpadla a solární systémy. Náš produktový



Financial values in the chart are available after Alsico Czechia S.R.O. report is purchased. Looking for more than just a company report? EMIS company profiles are part of a larger information service which combines company, industry and country data and analysis for over 145 emerging markets.



Find company research, competitor information, contact details & financial data for Photon Energy Technology CEE s.r.o. of Praha, Hlavní město Praha. Get the latest business insights from Dun & Bradstreet.



2 ? Technik Kvality in Brno, GS, Czechia - Hitachi. Location: Brno, Jihomoravský kraj, Czechia Job ID: R0046963 Date Posted: Dec 19, 2024 Segment: Green Energy & Mobility Business Unit: Hitachi Energy Company Name: HITACHI ENERGY CZECH REPUBLIC S.R.O.



M-TEC Energy Systems Czechia s.r.o., Sokolovská, Praha, v případě z obchodního rejstříku - adresa sídla firmy, majitel, vedení firmy, založení a vznik obchodní společnosti, podmínky činnosti, aktuálně v případě M-TEC Energy Systems Czechia s.r.o.



Děkujeme za spolupráci s našimi partnery v oblasti EMS (systémů spotřební energie) využívané osvětlení, testování a otevírání softwarových balíčků. Tento software, který tvoří jadro energetického řešení M-TEC, sleduje a monitoruje všechny zdroje a

CZECHIA ENERGY STORAGE

spotykanie energii. M-TEC Energy Systems Czechia s.r

CZECHIA ENERY S R O



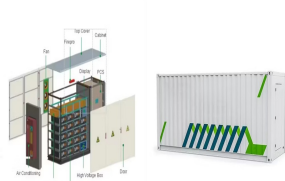
AVL Moravia s.r.o. Skip to main content Go to the home page. Search for solutions, webinars, etc. Emission and Energy Certification; Hybrid and Engine Testing; Alternative Fuel Engine Testing; Transmission Testing; Czechia AVL Moravia s.r.o. Main Contacts. Address. Tovarni 605 75301 Hranice Czechia. Maps link.



Nalco Czechia s.r.o Voct???ova 2449/5 180 00 Praha 8 Czech Republic. Tel: +420 296114003 optimize water and energy use, and improve operational efficiencies for customers around the world. Our Products. Our Solutions; Our Offerings; Safety Data Sheets; Success Stories



Energy. Info Center. Info Center Find helpful information about SCHURTER, SCHURTER Eletronics spol. s r.o. has been awarded certification according to ISO9001:2015, ISO14001:2015, ISO45001:2018 and ISO13485:2016 as part of our commitment to quality, the environment, health and safety and ongoing improvement of all relevant processes



Tepl?rna Kladno s.r.o. is one of a major producers of thermal and electrical energy. It is heat and electricity supplier for Kladno households and industry companies. It plays also an important role for stability of the Czech grid system thanks to providing a grid support services and as a back-up power source for Prague?s Metropolitan Area



Medtronic Czechia S.R.O. is based in Czech Republic. The head office is in Prague. The company operates in the Other Miscellaneous Nondurable Goods Merchant Wholesalers industry. It was established on November 10, 1995. It currently has a total number of 200 - 249 (2023) employees. In 2023, the company reported a net sales revenue increase of

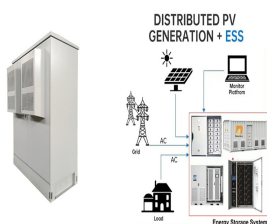
CZECHIA ENERGY S R O



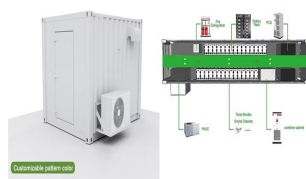
Executives - Siemens Energy, s.r.o., od??t??pn? z?vod Industrial Turbomachinery Buy the executives list from same sector. Ing. Erik Feith, MBA. Factory/Plant Director/Manager (??editel z?vodu) General Information - Siemens Energy, s.r.o., od??t??pn? z?vod Industrial Turbomachinery.



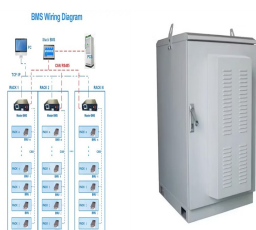
M-TEC Energy Systems Czechia s.r.o. Hala 4 - B 12 FOR ARCH. Adresa Sokolovsk? 694/100a Praha 8 186 00 ??esk? republika +420/ 601 204 445 info@m-tec.systems. Profil firmy CS katalogy s.r.o. Janou??kova 2015/1a. 613 00 Brno, ??esk? republika. I??O: 01708511, DI??: CZ01708511.



Siemens Energy, S.R.O. is an enterprise located in Czech Republic, with the main office in Brno. The company operates in the Engine, Turbine, and Power Transmission Equipment Manufacturing industry. Siemens Energy, S.R.O. was incorporated on September 11, 2019. There are currently 500 - 999 (2023) people employed by Siemens Energy, S.R.O..



United Energy, a.s. - tepl?rna Komo??any - V?m??na n?tokov?ho potrub? k v??? 3/4 i CHV5" Spole??nost SP Power s.r.o. p??sob? na trhu od roku 2009 a zam????uje se na realizace projekt?? v oblasti energetiky, p??edev??m v oblasti mechanick?ch ???



BOHEMIA ENERGY entity s.r.o. (n??kdy uv?d??na jako BEE) byl ??esk? dodavatel elektrick? energie a zemn?ho plynu existuj?c? od roku 2005. Po pln? liberalizaci trhu s energiemi byla Bohemia Energy prvn?m alternativn?m dodavatelem, kter? ob?? komodity nab?dl i dom?cnostem.



DENSO Czech s.r.o. was founded in 2004 as ASMO Czech s.r.o. the very first European subsidiary of ASMO Co., Ltd. and part of Japanese global group DENSO CORPORATION. Company name was changed to DENSO Czech ???

CZECHIA ENERGY S R O



DENSO Czech s.r.o. was founded in 2004 as ASMO Czech s.r.o. the very first European subsidiary of ASMO Co., Ltd. and part of Japanese global group DENSO CORPORATION. Company name was changed to DENSO Czech s.r.o. on Oct 1st 2019 as Japanese company ASMO Co., Ltd. concluded 40 years of its independent existence and returned back into ???