

# DR CONGO BIOLITE SOLARHOME 620

## BATTERY EXPANSION



We have a BioLite SolarHome 620 kit that we like as a backup light source for the occasional power failure or for camping. your own, all prices very approx, \$100 100w panel, \$20 charge controller, \$40 inverter, and \$100 battery) - for that, you would get **\*\*way\*\*** more power, and be able to upgrade, etc. More importantly than those things



+ ??? SolarHome's name comes from the 6-watt solar panel and 20 watt hour battery inside the control box that keeps the whole system running. An Integrated LED display provides real-time feedback on your sun strength and power available. SolarHome 620+ is currently in over 40,000 homes across Western Kenya in use every day.



Turn any off-grid structure into an electrified home with the BioLite SolarHome 620+, a self-contained system with hanging lights, MP3/FM radio, solar charger and USB charge-out for your devices. Outputs: 2 USB charge-out ports; 1 DIN port for expansion battery (not included); 2 ports for included hanging lights; and 3 light extension



The BioLite SolarHome 620 provides power for lights, device charging, radio and music by harnessing the sun's rays. The control box has a 6V, 3,300mAh battery that's powered by the solar panel



In 2020 our product range in local emerging markets expanded to include a larger solar home solution that can be paired with SolarHome 620+ for more power, light, and solar TV (you can ???)

# DR CONGO BIOLITE SOLARHOME 620 BATTERY EXPANSION



BioLite; Product Guides; SolarHome 620+ SolarHome 620 and 620+ Product Guide Instruction Manual. Download SolarHome 620+ Instruction Manual. Was this article helpful? 0 out of 1 found this helpful. Articles In This Section. The SolarHome 620+ Instruction Manual mentions "Expandability." What does that mean and is that available to me as an



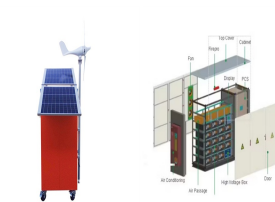
BioLite. The control box includes its own light, a radio, and even built-in storage for other emergency accessories. To set up the SolarHome 620, all you need is a hammer and a sense of rustic whimsy.



Turn any structure, vehicle or sturdy tent into a home-from-home with the Biolite SolarHome 620. The portable solar panel provides power for lights and entertainment (via an FM radio and MP3 player) all managed from a LED backlit control box. It produces up to 400 lumens and offers the opportunity to charge 2 devices at once via the USB charge-outs.



BioLite's first crossover product, the SolarHome 620+ is currently in use in millions of homes across sub-Saharan Africa, delivering reliable daily energy to off-grid families. Turn any off-grid structure into an electrified home with a kit ???



Shop BioLite SolarHome System 620+ | 17% Off Be The First To Review BioLite SolarHome System 620+ Blazin" Deal + Free Shipping over \$49. Toll-Free: +1-800-504-5897 Help Center Check Order Status. All BioLite Battery Chargers Reviews All Battery Chargers Reviews All BioLite Reviews All Customer Product Reviews. We've got an AWESOME deal for you!

# DR CONGO BIOLITE SOLARHOME 620 BATTERY EXPANSION



The new Biolite SolarHome 620 is a Solar station for small scale, emergency preparation, comfort camping, van life or small house or cabin electronics kit. It includes a radio, MP3 (do people still refer to them as MP3"s) ???



Designed for use with the SolarHome 620, this adapter plugs into the solar input port on your Control Box for fast wall charging. Filling the 20Wh battery in under two hours, this is a reliable way to give your SHS620 an on-grid supplement ???



Its probably nominal 5v to charge lithium battery at 4.2v. Convenient for usb 5v too. If you can, get a multimeter and measure open circuit voltage in full sun on your existing panel, for nominal 5v ???



The improved BioLite SolarHome 625 brings modern lighting, charging, and entertainment to the off-grid home. Featuring 25% more run time via improved LED efficiency, the system's three hanging lights provide overhead multi-room lighting, each with their own control switch ??? and one with an included motion-activated sec



Behind The Design of BioLite's First Crossover Product SolarHome 620 is BioLite's first crossover product. Translation? Whether you're in a home in Western Kenya or a van in Utah, we're all using the same gear. Many solar kits use the battery box as just a storage unit that runs lights; we saw this as an opportunity to turn it into a

# DR CONGO BIOLITE SOLARHOME 620 BATTERY EXPANSION



As a crossover product, the SolarHome 620+ was designed for use predominantly among off-grid households across sub-Saharan Africa. In 2020 our product range in local emerging markets expanded to include a larger solar home solution that can be paired with SolarHome 620+ for more power, light, and solar TV (you can read about it in our 2020 Impact Report ).



Whether our off-the-grid refuge is a summer cabin or a camping trailer, we outfit it with the BioLite SolarHome 620+ Solar-Powered Light. This system includes four lights???two hanging, one motion activated, and one on the control box.

TAX FREE



The improved BioLite SolarHome 620+ brings modern lighting, charging, and entertainment to the off-grid home. Featuring 25% more run time via improved LED efficiency, the system's three hanging lights provide overhead multi-room lighting, each with their own control switch ??? and one with an included motion-activated security setting.



Create an off-grid lighting system, powered by the sun, and turn any structure into a real home away from home. Perfect for camping & caravanning, van life, outbuildings, or even just the next power outage, BioLite's SolarHome 620 system will light up your life, and so much more. This easy-to-install system uses a 6 watt solar panel to capture the daily sun, which charges up the ???



The BioLite SolarHome 620 is an easy-to-install solar panel that captures daily sun to charge up a central control box which powers 3 hanging lights, USB charge-out, and an FM radio system. (Expansion Battery) Light Port x 2; Light Junctions x 3 (Light Extensions) Battery. 3600 mAh @ 6.5V (23 Wh), LiFEPO4; Cable Length. Lights: 5.5m: All

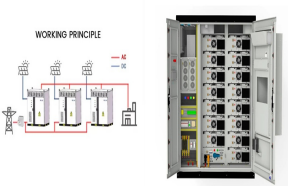
# DR CONGO BIOLITE SOLARHOME 620 BATTERY EXPANSION



The SolarHome 620+ is a self-contained unit capable of turning any off-grid structure into an electrified home. Biolite SolarHome System 620+ ?125.99 ?179.99 30% off. Size Guide. (expansion battery)  
Light port 2x (hanging lights) Light junctions 3x (light extensions)



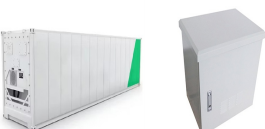
Shop BioLite SHA0301 SolarHome 620+ Off-Grid Solar System  
Turquoise. Free delivery on eligible orders of ?20 or more. Control box includes 20-watt hour rechargeable battery to store solar energy, 2 USB device charging ports, digital display for feedback on power availability, and speaker control



SHA1001.R6.IM 11 Hours Light 85% Battery Manual completo de instrucciones, tutoriales en video, preguntas frecuentes y m?s // Manuels d'instruction complets, tutoriels vid?os, questions courantes, et bien plus // Volledige handleidingen, instructievideo's, veelgestelde vragen en nog veel meer // Vollst?ndige Bedienungsanleitung, Tutorial-Videos, h?ufige



We have 1 BioLite SolarHome 620 manual available for free PDF download: Instruction Manual Stove Accessories Wood stove Solar panel Battery Charger. More BioLite Manuals . manualslib. Our app is now available on Google Play About Us ; F.A.Q. What Our Users Say



Total run time of your light depends on brightness settings, battery levels, and how many other units or features are being used at the same time. The LED on the Security Light Switch will

# DR CONGO BIOLITE SOLARHOME 620

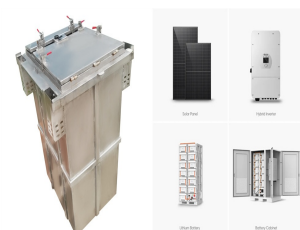
## BATTERY EXPANSION



The SolarHome 620+ brings modern lighting, energy, and entertainment to transform any structure into an off-grid home. The easy-to-install solar panel captures daily sun to charge up a central control box which powers 3 hanging lights, USB charge-out, and a FM radio system. BioLite's first-crossover product, the SolarH



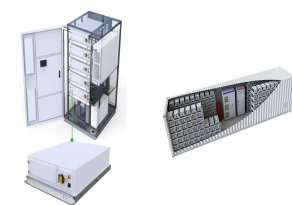
Bring the power of home anywhere off the grid with BioLite SolarHome 620+. The SolarHome 620+ brings modern lighting, charging capability, and music to any off-the-grid location. The easy-to-install solar panel captures power from the sun to charge up the 23 watt-hour battery within the control box. Use the control box to power up 3 hanging



Biolite SolarHome 620+ ??? F?rvandla vilken plats som helst till ett sj?lvf?rs?rjande hem med detta off-grid energisystem. Perfekt f?r stugor, skjul, camping och n?dpaket. Inkluderar solpanel, 3 ljusk?llor, kontroll box med radio/MP3 och USB-portar. H?llbart och l?tt installerat.



Designed for use with the SolarHome 620, this adapter plugs into the solar input port on your Control Box for fast wall charging. Filling the 20Wh battery in under two hours, this is a reliable way to give your SHS620 an on-grid supplement for overcast days or head start before the next power outage. Charges SolarHome



The BioLite SolarHome System 620 lets you use the power of the sun to brighten up your home. Includes a splashproof 6-watt solar panel and 20-watt battery to power lights, radio, and charging station. Provides up to 14 hours of power with 1 day of sun. Features: ??? 100 lumen light ??? Motion-activated security light