

# DAILY FLYWHEEL ENERGY STORAGE FOR POPULOUS COUNTRIES



What is the largest flywheel energy storage system in the world? Image: Shenzhen Energy Group. A project in China, claimed as the largest flywheel energy storage system in the world, has been connected to the grid. The first flywheel unit of the Dinglun Flywheel Energy Storage Power Station in Changzhi City, Shanxi Province, was connected by project owner Shenzhen Energy Group recently.



Where is China's first large-scale flywheel energy storage project? From ESS News China has connected to the grid its first large-scale standalone flywheel energy storage project in Shanxi Province's city of Changzhi. The Dinglun Flywheel Energy Storage Power Station broke ground in July last year.



Who financed China's largest flywheel energy storage system? The project was developed and financed by Shenzhen Energy Group. Image: Shenzhen Energy Group. A project in China, claimed as the largest flywheel energy storage system in the world, has been connected to the grid.



What is China's first grid-connected flywheel energy storage project? The 30 MW plant is the first utility-scale, grid-connected flywheel energy storage project in China and the largest one in the world. From ESS News China has connected to the grid its first large-scale standalone flywheel energy storage project in Shanxi Province's city of Changzhi.



What is a flywheel energy storage system? A flywheel energy storage system is a device that stores energy in a rotating mass. It typically includes a flywheel/rotor, an electric machine, bearings, and power electronics. Fig. 3. The Beacon Power Flywheel, which includes a composite rotor and an electric machine, is designed for frequency regulation.

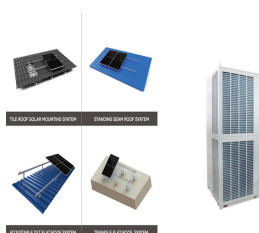
# DAILY FLYWHEEL ENERGY STORAGE FOR POPULOUS COUNTRIES



Are flywheels a good choice for electric grid regulation? Flywheel Energy Storage Systems (FESS) are a good candidate for electrical grid regulation. They can improve distribution efficiency and smooth power output from renewable energy sources like wind/solar farms. Additionally, flywheels have the least environmental impact amongst energy storage technologies, as they contain no chemicals.



A flywheel energy storage system stores energy mechanically rather than chemically. It operates by converting electrical energy into rotational kinetic energy, where a heavy rotor (the flywheel) spins at high speed within a ???



In essence, a flywheel stores and releases energy just like a figure skater harnessing and controlling their spinning momentum, offering fast, efficient, and long-lasting energy storage. Components of a Flywheel Energy Storage ???



Increasing levels of renewable energy generation are creating a need for highly flexible power grid resources. Recently, FERC issued order number 841 in an effort to create new US market ???



A project in China, claimed as the largest flywheel energy storage system in the world, has been connected to the grid. The first flywheel unit of the Dinglun Flywheel Energy Storage Power Station in Changzhi City, Shanxi ???

# DAILY FLYWHEEL ENERGY STORAGE FOR POPULOUS COUNTRIES



One of these contenders is long-duration flywheel energy storage (LD FES), a mechanical energy storage technology that stores angular kinetic energy. The energy storage operating principles ???



The benefit values for the environment were intermediate numerically in various electrical energy storage systems: PHS, CAES, and redox flow batteries. Benefits to the environment are the ???



China has connected its first large-scale, grid-connected flywheel energy storage system to the power grid in Changzhi, Shanxi Province. The Dinglun Flywheel Energy Storage Power Station, with a capacity of 30 MW, is ???



? 1/4 ? 50,????????????????? ???



The anatomy of a flywheel energy storage device. Image used courtesy of Sino Voltaics . A major benefit of a flywheel as opposed to a conventional battery is that their expected service life is not dependent on the ???

# DAILY FLYWHEEL ENERGY STORAGE FOR POPULOUS COUNTRIES



The flywheel energy storage system (FESS) offers a fast dynamic response, high power and energy densities, high efficiency, good reliability, long lifetime and low maintenance requirements, and is



Flywheel energy storage technology is a form of mechanical energy storage that works by accelerating a rotor (flywheel) to a very high speed and maintaining the energy in the system as kinetic energy.



Kinetic Energy (KE) storage is also known as a flywheel energy storage system. It is a mechanical energy storage that contributes to high energy and performance. Minimize the ???