

DENMARK 6000XP SOLAR



EG4 6000xp hooked to 18 Hyperion 395W bi-facial solar panels, 9 per MPPT, currently 2 EG4 Lifepower4 version 2 batteries This for 90% Forums. New posts Registered members Current visitors Search forums Members. EG4 6000xp Solar PV Stringing suggestions GotBoom! Mar 1, 2024; DIY Solar General Discussion; Replies 2 Views 644. Mar ???



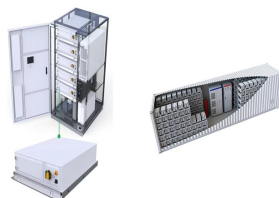
DIY Solar Products and System Schematics. Is anyone aware if it's possible to set up a 120/208V three-phase system with 2 6000XP units? the connection between phases and each inverter leg requires a specific order? And if settings should be assigned to each inverter with a specific phase (e.g., Inverter 1: Phase U, Inverter 2: Phase V)?



XP can use energy from the grid, PV, or batteries to power the system. However, not all the sources are required. In an off-grid situation, the inverter can be used with just batteries and solar as the energy sources. The 6000XP can also be used with just battery and the grid.



Can I run a eg4 6000xp with 8 li time 12v 100ah batteries 4 in parallel then in series. Forums. New posts Registered members Current visitors Search forums Members. What's new. DIY Solar General Discussion . Eg4 6000xp. Thread starter Andy111; Start date Oct 20, 2024; A. Andy111 New Member. Joined Oct 20, 2024 Messages 6



I am setting up a single 6000xp on an off grid system. Am going through the configurations but I can't find good explanation of what each setting means for my situation. I.e. composed phase. I have a discussion going with shop solar but they have to forward the question to EG4. Its been a few days without any response. With the holiday, I



DIY Solar Products and System Schematics. Wiring config was: 200amp main panel -> 100amp subpanel -> 50amp breaker to 6000xp -> to 50amp subpanel. It ran fine from Friday to Sunday night about 11:30 PM. Then the EPS started turning on and off continuously. The screen would stay on

DENMARK 6000XP SOLAR

and the "normal" icon would flash with the clicks of the ???

DENMARK 6000XP SOLAR



Features: The EG4 6000XP is a cutting-edge 48V split-phase, off-grid inverter and charger, designed to revolutionize your energy needs. With an impressive 8kW of PV input capacity and an efficient 6kW continuous power output, it also serves as a battery 140A charger.



I have an EG4 6000XP and 5700 watts of solar and 300 AH of batteries powering some of my household loads with a ProTran manual transfer switch. I still have grid power as well. On low solar production days as we start to enter November, December, and January with more clouds and rain, I can either run the inverter during the day and shut it



Today, we're taking an in-depth look into EG4's flagship inverter, the EG4 6000XP. This is a powerhouse of a unit that was designed for those looking to go fully off-grid with solar power, and it's packed with all the standard features you'd expect from a high-end inverter???but without the luxury price tag.



New to the solar community. Looking to start with a 6000XP and server rack battery back-up with plans in the future to add solar. Home is entirely gas except for 4 ton AC, dishwasher, microwave; all LEDs. My understanding of the 6000XP is summed up in the attached diagram. My understanding is that the 6000 XP allows for 30 amp generator pass



I am planning to build a Solar generator which will consist of an EG4's 6000XP, an EG4 6 battery cabinet with 6 EG4 batteries, and 10 400-watt solar panels. First, I charge my batteries to its full capacity of 30 Kwh with my Standby using a 30amp NEMA L14-30R. At 7200 watts of charging input, my



XP does not backfeed to the grid. By design, it's an off-grid inverter. It *can* pull from the grid, though, in order to bypass the inverter to power the loads from the grid, or to charge the batteries. - It can be used to charge the battery from the line, but when it's doing that, it can't also

DENMARK 6000XP SOLAR

invert the battery/solar DC to AC

DENMARK 6000XP SOLAR



XP Already Broken - Help? Thread starter; Start date Nov 22, 2024; New Member. Joined May 6, 2023 Messages 14 Location Minnesota. Nov 22, 2024 #1 Appreciate all the knowledge on the forum. I'm going to assume EG4/Signature Solar won't be particularly merciful in this instance. Pretty gutted that I decided to do the exchange program



Hello, I'd like to build/buy a subpanel for an EG4 6000XP, preferably with 240 and 120v. Can this be purchased online ? Is it worth to build one ? If so, any recommendations would be greatly appreciated ! Happy Thanksgiving everyone ! David



I have a mobile solar trailer (4kpanels / 6000xp / EG4 powerpro 14.5kw). In order to use this system in an emergency situation to power a few items in my home, is it necessary to even run a neutral wire. If I run L1,L2 and a ground wire, would'nt the bonding in the main panel take care of the neutral.



DIY Solar Products and System Schematics. EG4 6000XP 120v AC grid connection to 120/240v L1 and L2 input Wildcard442; Apr 30, 2024; DIY Solar General Discussion; 2. Replies 32 Views 2K. May 7, 2024. Marobel. M. D. EG4 6000XP gen boost question Darkwing; Jun 13, 2024;



They have come a long way. I plan on doing this again when I get my solar up and going - with internet. M. Madcodger Solar Wizard. Joined Aug 17, 2022 Messages 865. Nov 16, 2024 #18 So, if one wishes to have a 6000XP with wifi dongle STOP accessing the internet, but CONTINUE passing data to Solar Assistant, what does one do? T. timselectric If



DIY Solar Products and System Schematics. I have a 6000xp off-grid, with 2 x RuiXu 48v 5kwhr batteries Everything has been working fine for a few months. Batteries recently got cold (even though I have the heated versions, grrr). I've gently warmed them back up, but now have this issue.

DENMARK 6000XP SOLAR

They seem to take power, but not give power, which

DENMARK 6000XP SOLAR



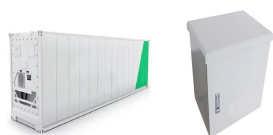
The EG4 12000XP triples the PV input capability of the 6000XP, handling up to 24kW of usable solar PV???an impressive leap from the 8kW supported by a single 6000XP. This means more solar energy harnessed, reducing dependency on grid power and ensuring your batteries charge even when you have demanding daytime loads. 2. Simplified System and



XP outputs 3000 watts on EACH 120v leg for a total of 6000 watts. Your panel feeds A-B-A-B etc from top to bottom. Tha was my assumption also .. but I talked to several techs a signature solar and they said that would create an imbalance . J. Jreese New Member. Joined Nov 27, 2024 Messages 10 Location Charleston South Carolina.



The EG4 6000XP documentation recommends that the wires to the e-panel should be #8AWG. I have an off grid solar system that I am just completed. I asked the electrical inspector to come inspect it. He said everything looked good except I need a ground wire from my Watts24/7combiner box, back to the house. I see nowhere in the instructions



Just finished a small test project with a ESP32 Devkit and MCP2515 CANBUS module following the instructions at the below post on the forum. In short, YES!, the Victron Shunt is reporting SOC%, Voltage, Current, and other items to the EG4 6000xp and controlling charge/discharge/etc. Thanks to the members in that thread for the core work done before.



The EG4 6000XP is a cutting-edge 48V split-phase, off-grid inverter and charger, designed to revolutionize your energy needs. With an impressive 8kW of PV input capacity and an efficient 6kW continuous power output, it also serves as a battery 140A charger. What sets it apart is its scalability - you can parallel up to 16 units for an impressive 96kW of output power while ???

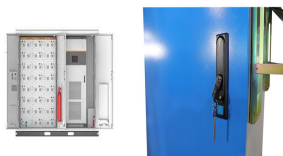
DENMARK 6000XP SOLAR



I have 2 6000XP's, 12K of solar, a chargeverter, 625KWH of basic Lifepo4 batts, and an older 12K Genset (super reliable, but non-inverter) I learned after Hurricane Helene (7 days no power in SC) how bad you need a GOOD Inverter generator with the 6000XP, each one only has 30A of charger from A/C, and it really wants to put the house load on the generator, ???



DIY Solar Products and System Schematics. I set up an eg4 6000xp and I was using 2 24v 100ah chins batteries wired in series for 48v 100AH. I then bought a 48v 100AH chins battery and added it in parallel to je 2 24v batteries which as far as I know gives me 48v 200 AH. After adding the last battery my 6000xp inverter will work for about 30



DIY Solar Products and System Schematics. know if you can increase the input charging wattage from a generator to charge batteries higher that 1600watts on a 6000XP? I have a Honda 7000is attached to my 6000XP. Not sure if this is possible.. My settings are all default out of the box currently. Is it even possible to charge batteries quicker?



I'm hoping someone will help me understand the following question regarding combining the AC output of multiple EG4 6000XP inverters. Thank you! In the system blueprint parts list for Will Prowse's video, How to Build Expandable Off-grid Solar Systems w/ EG4 6000XP, item #3 is "Retaining Bracket for 40A Inverter Breakers (not shown in