

DESIGN OF 22 PHOTOVOLTAIC PANELS



Using a solar panel system to power the heat pump, you can lower both your electricity and your heating bills. 22 October 2024. Community energy organisations are finding ways to translate their clean power into lower energy bills. Let's look at ???



Roll up your sleeves and learn how to design an optimal solar PV system. Get a perfect project layout easily with RatedPower. 28 OCT, 21 | Updated 14 NOV, 22. Natalia Opie. More on the blog. Technology and engineering. Solar energy blog. How to design an optimal solar PV system. Calle de Don Ram?n de la Cruz, 84, Ground Floor



Designing a solar photovoltaic (PV) system can be a rewarding endeavor, both environmentally and financially. As the demand for renewable energy sources rises, so does the interest in installing solar panels at homes ???



Effective PV system design involves strategic solar panel placement. Aim for maximum sun exposure all year round, considering the seasonal changes in the sun's trajectory. Commonly, this means south-facing panels in the northern ???



Solar design in contemporary architecture is rooted in the profession's sustainable turn. The relationship between architecture and energy is tied to both passive strategies and performance via

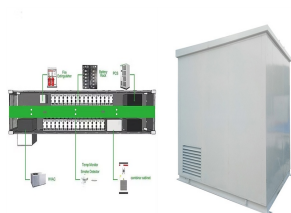


After installing a solar panel system, the orientation problem arises because of the sun's position variation relative to a collection point throughout the day. It is, therefore, necessary to change the position of the photovoltaic panels to follow the sun and capture the maximum incident

DESIGN OF 22 PHOTOVOLTAIC PANELS

beam. This work describes our methodology for the simulation and the
???

DESIGN OF 22 PHOTOVOLTAIC PANELS



A ground mounted solar panel system is a system of solar panels that are mounted on the ground rather than on the roof of buildings. Photovoltaic solar panels absorb sunlight as a source of energy to generate electricity. A photovoltaic (PV) module is a packaged, and connected photovoltaic solar cells assembled in an array of various sizes.



This new subsection has the potential to eliminate from the marketplace some ballasted systems where PV panels span to individual, isolated mountings. ASCE 7-22 has new qualifying criteria and nomenclature for wind design of fixed-tilt ground mount systems but not systems with single-axis trackers.



At the same time, since most roadways are exposed to sunlight, the harvesting of solar energy has a high degree of matching with the road network system, whose utilization form could be roughly divided into three: solar thermal systems [20], [21], [22], thermoelectric systems [23], and photovoltaic systems [24]. The asphalt solar collector converts solar energy into heat ???



The production of electric energy has been increasingly deriving from renewable sources, and it is projected that this trend will continue over the next years. Among these sources, the use of solar energy is supposed to be ???



SolarEdge Designer is a free solar design tool that helps PV professionals like yourself lower PV design costs and close more deals. Learn more. For Home; For Business For Business Automatic population of the rooftop using an irradiance map and shading analysis optimum placement of the solar panels, so you can deliver the best possible

DESIGN OF 22 PHOTOVOLTAIC PANELS



as much solar energy annually as the U.S. average ??? as much over the course of the year as southern France and more than Germany, the current leader in solar electric installations. Under cloudy conditions, it is true that photovoltaics produce only 5 to 30 percent of their maximum output. However, because solar photovoltaics become less



1.1 Solar Energy 1 1.2 Diverse Solar Energy Applications 1 1.2.1 Solar Thermal Power Plant 2 1.2.2 PV Thermal Hybrid Power Plants 4 1.2.3 PV Power Plant 4 1.3 Global PV Power Plants 9 1.4 Perspective of PV Power Plants 11 1.5 A Review on the Design of Large-Scale PV Power Plant 13 1.6 Outline of the Book 14 References 15 2 Design Requirements 19



Solar Panels Network USA stands at the forefront of solar energy solutions, driven by a team of seasoned solar engineers and energy consultants. With over decades of experience in delivering high-quality solar installations and ???

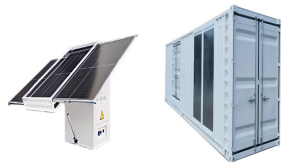


ASCE 7 Guidelines. The American Society of Civil Engineers (ASCE) provides guidelines for the structural design of solar panel installations through their publication, ASCE 7 1. These guidelines cover the essential factors that influence solar panel installations, such as wind loads, snow loads, and dead loads, to ensure the safe and efficient operation of these ???



Currently, the use of photovoltaic solar energy has increased considerably due to the development of new materials and the ease to produce them, which has significantly reduced its acquisition costs.

DESIGN OF 22 PHOTOVOLTAIC PANELS



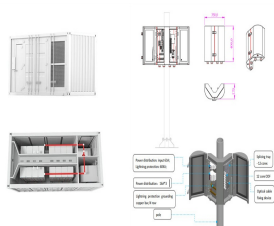
22 languages available. See how employees at top companies are mastering in-demand skills. Learn more about Coursera for Business Share it on social media and in your performance review. There are 5 modules in this course. Solar Energy System Design builds upon the introduction to PV systems from Solar Energy Basics course, which included



As customers feed solar energy back into the grid, batteries can store it so it can be returned to customers at a later time. The increased use of batteries will help modernize and stabilize our country's electric grid. Additional Information. Learn more about the basics of photovoltaic technology and the solar office's photovoltaics research.



2 DESIGN CONSIDERATIONS 2.1 General 2.2 PV Modules 3 2.3 Inverters 3 2.4 Power Optimisers 4 2.5 Surge Arresters 4 SAMPLE CHECKLIST FOR INSPECTION AND TESTING OF SOLAR PV SYSTEMS 22. Hanboo on Desn Oeaton an Mantenane of Sola Potoolta Sstes 1 solar panel at the time of manufacturing with a view to providing easy installation



Suppose, in our case the load is 3000 Wh/per day. To know the needed total W Peak of a solar panel capacity, we use PFG factor i.e. Total W Peak of PV panel capacity = $3000 / 3.2 \text{ (PFG)} = 931 \text{ W Peak}$. Now, the required number of PV panels are = $931 / 160\text{W} = 5.8$. This way, we need 6 numbers of solar panels each rated for 160W.



You can include PV panels in your model by following the instructions below. Position and size PV panels by following instructions in the Adding Solar Collectors topic. To access the properties of the PV panel first navigate to the ???

DESIGN OF 22 PHOTOVOLTAIC PANELS



Conversely, the customer can draw needed power from the utility when energy from the PV system is insufficient to power the building's loads. Under this arrangement, the customer's Benefits of PV Systems Design and Sizing of Solar Photovoltaic Systems ??? R08-002 i. a. Environmentally friendly - It has zero raw fuel costs, unlimited



The race to produce the most efficient solar panel heats up. Until mid-2024, SunPower, now known as Maxeon, was still in the top spot with the new Maxeon 7 series. Maxeon (Sunpower) led the solar industry for over a decade until lesser-known manufacturer Aiko Solar launched the advanced Neostar Series panels in 2023 with an impressive 23.6% module ???



The following elements are commonly included in an off-grid solar rooftop design: battery bank, inverter, solar panel, charge controller, and backup generator. The hybrid Solar Rooftop Design. Photovoltaic (PV) panels and a backup generator are combined in a hybrid solar rooftop design to produce a consistent and dependable electricity supply.



Solar photovoltaic. Photovoltaic modules installed on a sloping roof or facade occupy an area of approximately 8 m²/kWp.. Photovoltaic modules installed on the ground or on a flat surface occupy an area of approximately 20 m²/kWp, avoiding shading between the rows of modules.. The design of a photovoltaic system, from the public operator's network to the photovoltaic ???



Roof orientation is another critical factor in site assessment. The system, implemented across an area of 8 square meters, can generate an annual net exergy of 2195.81 kWh, operating at an efficiency of 11.8%. The angle and ???

DESIGN OF 22 PHOTOVOLTAIC PANELS



Our solar panel layout tool and PV design software make it easy for you to plan and optimize your solar panel installation. With advanced features and a user-friendly interface, you can confidently design a system that meets your energy needs and budget. Try ???



Although solar energy is more than sufficient for human needs, in practice it would be impossible to harness even half of it in conventional photovoltaic systems; this is because the annual production of refined silicon (i.e., suitable for use in electronics) is about 30,000 tons. Since then, our global electronics design community has



Among renewable energy resources, solar energy offers a clean source for electrical power generation with zero emissions of greenhouse gases (GHG) to the atmosphere (Wilberforce et al., 2019; Abdelsalam et al., 2020; Ashok et al., 2017). The solar irradiation contains excessive amounts of energy in 1 min that could be employed as a great opportunity ???



(not concentrated solar) *Energy from sunlight creates an electrical charge in a solar cell. This electricity is then collected Chapter 2: Design Loads 28 ???ASCE 7-22, Figure 7.13-2 ???ASCE 7-22, Figure 7.13-3 ???Snow is assumed to blow off or melt ???