

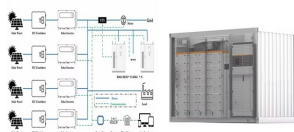
DESIGN OF ENERGY STORAGE LIQUID COOLING SYSTEM



Liquid Cooling. Active water cooling is the best thermal management method to improve BESS performance. Liquid cooling is extremely effective at dissipating large amounts of heat and maintaining uniform temperatures throughout the battery pack, thereby allowing BESS designs that achieve higher energy density and safely support high C-rate



The findings indicate that liquid cooling systems offer significant advantages for large-capacity lithium-ion battery energy storage systems. Key design considerations for liquid cooling heat a?|



As a large energy storage system for new energy generation such as solar power and wind energy, it can effectively avoid the unstable power generation of renewable energy and its impact on the power grid. Users can continuously use stable and high-quality new energy power. With the world's first "3-in-1 integration" technology supported by power electronics, a?|



In recent years, liquid air energy storage (LAES) has gained prominence as an alternative to existing large-scale electrical energy storage solutions such as compressed air (CAES) and pumped hydro energy storage (PHES), especially in the context of medium-to-long-term storage. LAES offers a high volumetric energy density, surpassing the geographical a?|



This paper first introduces thermal management of lithium-ion batteries and liquid-cooled BTMS. Then, a review of the design improvement and optimization of liquid-cooled cooling systems in recent years is given from three aspects: cooling liquid, system structure, a?|

DESIGN OF ENERGY STORAGE LIQUID COOLING SYSTEM



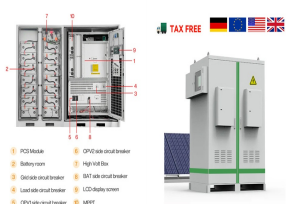
There are two cooling tube arrangements were designed, and it was found that the double-tube sandwich structure had better cooling effect than the single-tube structure. In order to analyze the effects of three parameters on the cooling efficiency of a liquid-cooled battery thermal management system, 16 models were designed using L16 (43) orthogonal test, and a?



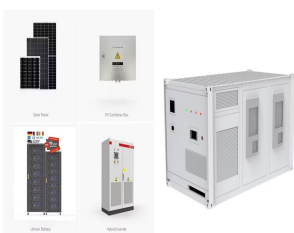
The cooling methods employed by BTMS can be broadly categorized into air cooling [7], phase change material cooling [8], heat pipe cooling [9] and liquid cooling [10]. However, air cooling falls short of meeting the heat transfer demands of high-power vehicle batteries due to its relatively low heat transfer coefficient, and phase change material cooling a?



The design of a liquid cooling system for batteries entails considering the size of the BP and the type of cells being cooled Modeling and analysis of liquid-cooling thermal management of an in-house developed 100 kW/500 kWh energy storage container consisting of lithium-ion batteries retired from electric vehicles. Appl. Therm. Eng., 232



Pollution-free electric vehicles (EVs) are a reliable option to reduce carbon emissions and dependence on fossil fuels. The lithium-ion battery has strict requirements for operating temperature, so the battery thermal management systems (BTMS) play an important role. Liquid cooling is typically used in today's commercial vehicles, which can effectively a?



Abstract. An effective battery thermal management system (BTMS) is necessary to quickly release the heat generated by power batteries under a high discharge rate and ensure the safe operation of electric vehicles. Inspired by the biomimetic structure in nature, a novel liquid cooling BTMS with a cooling plate based on biomimetic fractal structure was a?

DESIGN OF ENERGY STORAGE LIQUID COOLING SYSTEM



Global transition to decarbonized energy systems by the middle of this century has different pathways, with the deep penetration of renewable energy sources and electrification being among the most popular ones [1, 2]. Due to the intermittency and fluctuation nature of renewable energy sources, energy storage is essential for coping with the supply-demand a?|



A battery module with 20 cylindrical LIBs has been constructed for cooling performance evaluation of BICS. The cooling channels of the BICS system have been optimized, and numerical analysis was employed to investigate the impact of coolant flow rate, battery module arrangement, and cooling channel design on the system's cooling performance.



The cooling plate is an important guarantee for the performance of liquid-cooling thermal management systems. but also provides a new direction for the design of liquid-cooled cooling plates. 2. Numerical model J Energy Storage, 48 (2022), p. 13. Google Scholar



Battery Energy Storage System Design. Designing a BESS involves careful consideration of various factors to ensure it meets the specific needs of the application while operating safely and efficiently. The first step in BESS design is to clearly define the system requirements: 1. Energy Storage Capacity: How much battery energy needs to be



Lithium-ion batteries are widely adopted as an energy storage solution for both pure electric vehicles and hybrid electric vehicles due to their exceptional energy and power. The liquid cooling system comprises a condenser connected with external liquid loop (The coolant flow rate was kept at 8 L/min), a battery tank equipped with a pressure

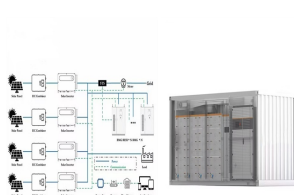
DESIGN OF ENERGY STORAGE LIQUID COOLING SYSTEM



Air cooling systems utilize a HVAC system to keep each cabinets operating temperature within optimal range. Aerosol fire suppression is also integrated into each outdoor cabinet allowing for safer and more controlled energy storage system design for firefighting. 340kWh rack systems can be paired with 1500V PCS inverters such as DELTA to



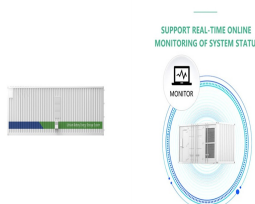
A. Fundamental System. Any chilled water cooling system may be a good application for thermal ice storage. The system operation and components are similar to a conventional chilled water system. The main difference is that thermal ice storage systems are designed with the ability to manage energy use based on the



%PDF-1.6 %aaLO 741 0 obj >stream hTH?W[oU: th+zUpDCI?| a? qa??v]a???hoO C 1/4 DMA?:v`+YU_?R? cU' a??c %S ?"A / AEa?cip| [E].E?/= Jj)& , qAAN ?a! vdED`a?? "a??{OqE?t1a?1 A? O+>-" AsA?a?!9, ;!s?dA,>A a??u\$I onilu : /EHg/?Entu oA 1/2 o o2a>J2+-Ua?|3k8lA Ot"q my!Ea"IL^0/p-l., A A`thEl4Ua a?!a?ou{a??a"A!uc |y{ U) :!C



BTMS in EVs faces several significant challenges [8].High energy density in EV batteries generates a lot of heat that could lead to over-heating and deterioration [9].For EVs, space restrictions make it difficult to integrate cooling systems that are effective without negotiating the design of the vehicle [10].The variability in operating conditions, including a?



The liquid cooling system efficiently lowers both the overall temperature and the non-uniform temperature distribution of the battery module. This heat dissipation capability is influenced by factors such as the arrangement of the liquid cooling plate, flow channel geometry, coolant inlet and outlet placement, coolant type, mass flow rate, and coolant flow direction and a?

DESIGN OF ENERGY STORAGE LIQUID COOLING SYSTEM



This paper explores its thermal management design. The layout of liquid cooling piping is studied. The specifications of cooling piping, cooling units and dehumidifying air conditioners are a?



Ren et al. [28] investigated the effect of changes in cold water flow rate and cold water inlet temperature on the bottom liquid-cooling thermal management system based on multi-channel flat tubes. The results show that this bottom liquid cooling thermal management system can effectively reduce the temperature rise of the battery module and has



Connected to a wind farm, this large-scale energy storage system utilizes liquid cooling to optimize its efficiency. While studies have used simulations to design enhanced cooling systems, the complex nature of batteries presents challenges [99]. Given the importance of thermal management in battery performance and lifespan, future research



Batteries have been widely recognized as a viable alternative to traditional fuels for environmental protection and pollution reduction in energy storage [1]. Lithium-ion batteries (LIB), with their advantages of high energy density, low self-discharge rate, cheap maintenance and extended life cycle, are progressively becoming dominant in battery world [2, 3].



The cooling methods for lithium-ion power batteries mainly include air cooling [5, 6], liquid cooling [7, 8], phase change materials (PCM) [9], and heat pipe cooling [10, 11]. Currently, the design of thermal management systems for flying cars or electric vertical take-off and landing (eVTOL) is still in its early stages.

DESIGN OF ENERGY STORAGE LIQUID COOLING SYSTEM



The cooling efficiency of five different liquid cooling plate configurations (Design I-V) is compared, and the impact of coolant flow rate is explored. Battery Energy Storage Systems (BESS) offer an effective solution to the problems of intermittency and variability in the conversion process of solar energy,



An efficient battery thermal management system can control the temperature of the battery module to improve overall performance. In this paper, different kinds of liquid cooling thermal management systems were designed for a battery module consisting of 12 prismatic LiFePO₄ batteries. This paper used the computational fluid dynamics simulation as a?



Energy Storage 2020, 32, 101771. [Google Scholar] Tete, P.R.; Gupta, M.M.; Joshi, S.S. Developments in battery thermal management systems for electric vehicles: A technical review. Research studies focus on optimization and design improvement of liquid cooling systems for batteries are summarized: Table 2. Recent research studies on the air