

DIMENSIONS OF 540 PHOTOVOLTAIC PANELS



Solar Panel Size: Power Output (Wattage) SEG payments ?180 to ?540. 7kW system ??? SEG payments ?200 to ?640. What Affects Solar Power Output? Solar panel power output is rated by how many watts are produced under standard test conditions (STC) in a laboratory. However, rooftop solar panels don't operate in a lab environment.



Introducing the Elan Series ASB-M10-144-520-545 by Adani Solar, an exceptional solar panel that represents a remarkable blend of cutting-edge technology and unmatched performance. This photovoltaic module is engineered to deliver high-efficiency power generation, making it an ideal choice for both residential and commercial applications. The Elan Series ASB-M10-144-520 ???



This leaves the output of the panel the same but reduces the electrical resistance in each of the cells leading to an efficiency gain for the solar cell. This is now a common technology deployed in most newer solar panel models. They are similar in size and weight to their full-cell equivalents. Solar panel output or "wattage"



The Sharp NUJD540 is a 540W solar panel with a silver frame. The panel has a 144 half-cell design and is ideal for large free-field and commercial rooftop photovoltaic systems. Dimensions: 2279 x 1134 x 35mm (L x W x D) Weight: 27.8kg;

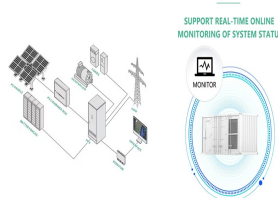


Adani Solar offers and produces Bifacial & Monofacial PV modules in TOPCon & MonoPERC technologies of M10 and G12 footprints with a Power class of 535-660W, module efficiency of 21-22%, and a target Bifaciality of 75-85%. Hailstone Resistance Qualified for larger size hail (???50 mm). Superior PID resistance, being one of the best in

DIMENSIONS OF 540 PHOTOVOLTAIC PANELS



540 Watt Solar panels" range of prices, dimensions, sizes, voltage output, specifications datasheets. Product Description The JR72-18X 540-560W is a premium solar panel [] View Product Download PDF. Evvo 540 Watt . Region: India. Features: Half Cell (half cut) / High efficiency (high



Therefore, consider solar panel dimensions to get an idea of the overall scale of a proposed solar system. In terms of dimensions, domestic solar panels average 1.7 metres long, and 1 metre wide and have a thickness of 3cm to 5cm. Solar Panel Weight:



Mechanical Data. SOLAR CELL: Mono PERC | MBB P-Type PERC Half-cut CELL ORIENTATION: 144 cell (182mm cell ??? half-cut) MODULE DIMENSIONS: 2266x1135x35 mm WEIGHT: 28.8 kg JUNCTION BOX: IP67 Key Features Impressive Power Output: With a robust 540 watts of power generation capacity, this solar panel is a powerhouse, ensuring you get the ???



Leading Solar PV Panel Manufacture now in India. Now get BIS Certified Solar System, PV Cells, and Other Solar Products at the best price. Module Authenticity Downloads Speak Up. Home. CEC JAM72D30 540-565 GB 1500V ? 1/4 ?2278-1134-30-33mm) Preview Download. CEC JAM72D30 530-555 MB 1500V ? 1/4 ?2278-1134-30-33mm? 1/4 ?



ZnShine Solar made solar cells in ZXM7 two times smaller than the standard size, thus reducing power loss and improving low-light behavior. As a result, the panel achieves an impressive efficiency of 21.13%. A substantial 12-year product warranty is also included with this 540 W ZnShine Solar solar panel. Enhanced frame design.

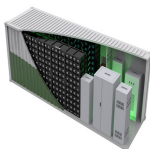
DIMENSIONS OF 540 PHOTOVOLTAIC PANELS

114KWh ESS



TSE BMS CE MSD UN38.3

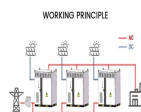
Waaree Reserves the right to change the specifications without prior notice. Models Pmax (W) STC NOCT Vmp (V) STC NOCT Imp (A) STC NOCT WSMD-540 WSMD-545 515 520 525 530 535 540 545 40.99 41.14 41.29 41.45 41.60 41.75 41.90 12.57 12.65 Waaree Energies Ltd. is amongst the top Solar Energy Companies and has the country's largest



Adani ELAN SHINE Series 540Wp bifacial mono perc half cut solar panel with 21% efficiency and bifaciality Factor up to 70 % . Longer Product life with 30 years performance warranty on power and Least Degradation for LID e, LeTID Adani ELAN SHINE Series Modules are Made with Ga doped wafer, and has Excellent PID Resistance MBB cell technology improves anti



Warranties are subject to the terms and conditions as per the Tata Power Solar warranty document. Certification may vary by module type. Box dimensions are subject to change 90.0% 97.5% 100% 0.1 25 0.6 % yearly degradation Degradation 12 30. Title: Data Sheet TP 540 HG10B (G-G) (new) (1) Created Date:



Solar Panel Size. It focuses on maximum electricity generation and overall capacity rather than the quantity of panels. To calculate the required system size, multiply the number of panels by the output. For example, a 6.6



Higher Power Output Tiger Neo N-type 72HL4-BDV 560-580 Watt SPECIFICATIONS Mechanical Characteristics Cell Type No. of cells Dimensions Weight Front Glass Frame Junction Box Output Cables 540 600 14 16-50 -25 0 25 50 75 100 20 40 60 80 100 120 140 160 180 Isc Voc Pmax 21.68% 21.87% 22.07% 30 28 30 11

DIMENSIONS OF 540 PHOTOVOLTAIC PANELS



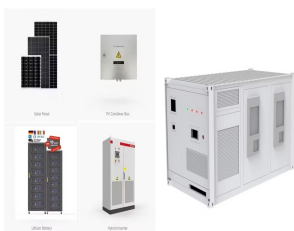
540 Watt HALF-CUT SOLAR PANEL . 540Wp. Power. 21.30%. Efficiency. 25years* Warranty. Enquire Now. Horizontal/Palletised Panels per Pallet : 30 Pallet Dimensions : 2050x1050x1200 mm Pallet Weight : The Bluebird 535 Watt Half-Cut Solar Panel offers an efficient and space-saving solution for generating solar energy with its innovative



Since the average residential solar panel weighs about 45 pounds and occupies about 18 square feet, the following calculations can be used to determine the approximate size and weight of a 10 kW solar system: Size: ???



JAM72S30-540/MR/1500V JAM72S30-540/MR/1500V
JAM72S30-540/MR/1500V JAM72S30 525-550/MR/1500V Country of Manufacturer China/Vietnam Measurement tolerance at STC: Pmax ?3 %, Voc ?3% and Isc ?4%. Global_EN_20210607A. Title: JAM72S30 525 ???



We are proud to present this high-quality 540W solar panel from leading solar panel manufacturer Sharp, durability and longevity of this premium solar panel. Specifications: Peak power: 540W; Maximum power voltage: 41.64V; Maximum power current: 12.97A; Open circuit voltage: 50.34V; Short circuit current: 13.66A; Power tolerance: 0/+5%;



The Sharp NUJD540 is a 540W solar panel with a silver frame. The panel has a 144 half-cell design and is ideal for large free-field and commercial rooftop photovoltaic systems. Sharp solar panels undergo rigorous testing to ensure ???

DIMENSIONS OF 540 PHOTOVOLTAIC PANELS



Size of 540 watt solar panels. To give you an idea, a standard 540 watt solar panel is approximately 88 x 46 inches and tips the scales at around 72 pounds. Most modules with this output rating are monocrystalline and typically have at least 72 cells (144 half-cut cells). Efficiencies vary widely from brand to brand, but most monocrystalline



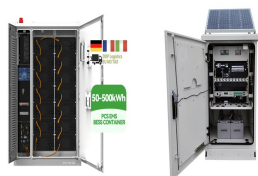
Photovoltaic panels 560W - Longi Hi-MO 5m LR5-72HPH 540-560M The Longi Hi-MO 5m LR5-72HPH 540-560M photovoltaic panels are an efficient and reliable solution for solar energy generation. These 560W high-power panels are ???



What are the benefits of using a mono half cut solar panel 540 watt? Mono half cut solar panels offer several benefits, including higher efficiency, better performance in shaded conditions, and reduced power loss. What is the size of a 540W solar panel in feet? The 540W solar panel typically measures approximately: Length: 2285 mm (about 7.5 feet).



Talesun Solar 540W Solar Panel 144 Cell Bifacial TD7G72M-540 at A1 SolarStore. Menu; Store. Store; Solar panels . Back. Wattage. 360 watt; 365 watt; 370 watt; 375 watt; 380 watt; 390 watt; 395 watt; 400 watt; 405 watt; 410 watt; Solar panels differ by power output, voltage, connection type, size, efficiency, and weight. Some solar panels



With over three decades of state-of-the-art manufacturing expertise, Tata Power Solar shines as a trailblazing global solar manufacturer with an unwavering commitment towards fostering robust supply chain practices. Our global footprint boasts the installation of over 3 GW of solar modules, showcasing our commitment to sustainable energy

DIMENSIONS OF 540 PHOTOVOLTAIC PANELS



96-cell solar panel size. The dimensions of 96-cell solar panels are as follows: 41.5 inches long, and 63 inches wide. That's a 63x41.5 solar panel. This form is a bit shorter but wider. This is the typical classification of solar panel sizes ???

TAX FREE 



Take control of your energy costs with our high-efficiency 540W monocrystalline solar panel. With a rated voltage of 41.39V and a rated current of 13.05A, this panel is designed to deliver reliable power for your home or business. Dimensions. Weight. 89.68 x 44.6 x 1.37 in . 68.3 Lbs . Cells. Connections. Monocrystalline solar cells . PV



SOLAR PV MODULE 144 HALF CUT CELL 525-550 W BIFACIAL DUAL GLASS high-e???iciency multi-busbar PERC cell, the half-cell con???uration of the modules o???ers the advantage of higher power output, better temperature-dependent performance, reduced shading e???ect on 540 49.68 13.94 41.21 13.11 20.90 PE-550HGB 550 49.82 14.06 41.41 13.29 21



Many solar panel companies make small solar panels designed specifically for small roofs. You can also opt for high-efficiency solar panels that have conversion rates as high as 23% (compared to the industry average of ???)