

DO SOLAR PHOTOVOLTAIC PANELS INCREASE CURRENT



The trough type solar photovoltaic power generation heat storage and heating system refers to the photovoltaic cell as the power source, as the energy conversion carrier to convert direct current into heat energy, which is the far-infrared thermal fiber soft board with constant resistance value, which stores the heat energy in the indoor floor tiles or the heat ???



Panel temperature will affect voltage ??? as has been discussed in another blog. Have a look at these I-V (Current vs Voltage) and P-V (Power vs Voltage) charts for a 305W solar panel from Trina Solar. You can see in the P ???



Increasing solar panel voltage can increase yield. First, what is voltage ??? voltage is the electrical pressure that pushes the flow of charged electrons i.e. current, along an electrical loop. The inverter receives direct current electricity from the solar panels or the batteries, and the inverter transforms this direct current voltage to



The short-circuit current from a solar cell depends linearly on light intensity, such that a device operating under 10 suns would have 10 times the short-circuit current as the same device under one sun operation. However, this effect does not provide an efficiency increase, since the incident power also increases linearly with concentration.



Solar energy is the conversion of sunlight into usable energy forms. Solar photovoltaics (PV), solar thermal electricity and solar heating and cooling are well established solar technologies. up from the current 1 300 TWh, will require annual average generation growth of around 26% during 2023-2030. Continuous support for all PV

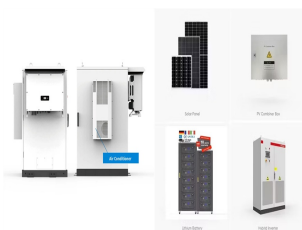
DO SOLAR PHOTOVOLTAIC PANELS INCREASE CURRENT



The short-circuit current from a solar cell depends linearly on light intensity, such that a device operating under 10 suns would have 10 times the short-circuit current as the same device under one sun operation. However, this effect does not provide an efficiency increase, since the ???



But solar panels can increase property value and make homes more attractive to buyers and current energy prices. The range of savings provided depends on whether the system can offer all of your power or if you will need to pay for some from the National Grid. The role of solar batteries in a solar panel system. Solar batteries are an



The solar panels that you see on power stations and satellites are also called photovoltaic (PV) panels, or photovoltaic cells, which as the name implies (photo meaning "light" and voltaic meaning "electricity"), convert sunlight directly into electricity. A module is a group of panels connected electrically and packaged into a frame (more commonly known as a solar ???

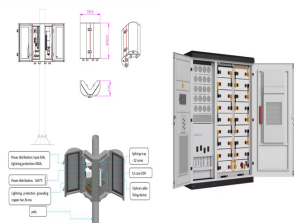


A solar module comprises six components, but arguably the most important one is the photovoltaic cell, which generates electricity. The conversion of sunlight, made up of particles called photons, into electrical ???



Alternative Energy Tutorial about how Series Connected Solar Panels can increase the array's terminal voltage while the output current remains the same. Solar Panel Current Ratings. Thus for Panel 1. $P_1 = 40 \text{ watts}$, $V_1 = ???$

DO SOLAR PHOTOVOLTAIC PANELS INCREASE CURRENT



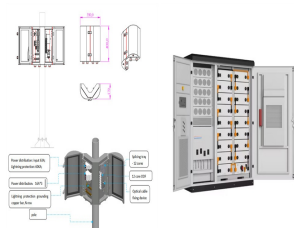
6 ? Here's why solar panels produce DC current: The Photovoltaic Effect. Solar panels generate DC electricity through a process called the photovoltaic effect. When sunlight hits the solar cells in a panel, it causes electrons to be knocked loose from their atoms. The solar panels capture these free electrons and direct them into an electric current.



The theory of solar cells explains the process by which light energy in photons is converted into electric current when the photons strike a suitable semiconductor device. The theoretical studies are of practical use because they predict the fundamental limits of a solar cell, and give guidance on the phenomena that contribute to losses and solar cell efficiency.



That is why all solar panel manufacturers provide a temperature coefficient value (P_{max}) along with their product information. In general, most solar panel coefficients range between minus 0.20 to minus ???



Solar Module Cell: The solar cell is a two-terminal device. One is positive (anode) and the other is negative (cathode). A solar cell arrangement is known as solar module or solar panel where solar panel arrangement is known as photovoltaic array. It is important to note that with the increase in series and parallel connection of modules the power of the modules also gets added.



Solar panels work by converting incoming photons of sunlight into usable electricity through the photovoltaic effect. Generating an electric current is the first step of a solar panel working, but the process doesn't end there. Here's how solar arrays create a usable electricity system for your home:

DO SOLAR PHOTOVOLTAIC PANELS INCREASE CURRENT



Find out how solar panel voltage affects efficiency and power output in our comprehensive guide. the panel's output decreases. Keep this in mind when planning your solar system! Solar Panel Types and Their Voltage Outputs Monocrystalline vs. Polycrystalline Solar Panels: Voltage Differences Simply set the multimeter to the direct



What are the Factors Affecting Solar Panel Efficiency? Solar panel efficiency isn't solely dependent on the sun but there are many other factors affecting solar panel efficiency. Let's learn about all these factors in detail. 1. ???



The collection of light-generated carriers does not by itself give rise to power generation. In order to generate power, a voltage must be generated as well as a current. then the collection of light-generated carriers causes an increase in the number of electrons on the n-type side of the p-n junction and a similar increase in holes in



Photovoltaic solar cells convert the photon light around the PN-junction directly into electricity without any moving or mechanical parts. PV cells produce energy from sunlight, not from heat. In fact, they are most efficient when they are cold!. When exposed to sunlight (or other intense light source), the voltage produced by a single solar cell is about 0.58 volts DC, with the current flow



Every solar panel typically comes with a female and a male MC4 connector. As previously explained, in a series connection, the voltages from the panels add up while the current remains the same. With mixed solar panels, if the voltage and amperage ratings are not identical, the voltages still add up, but the current will be equal to the

DO SOLAR PHOTOVOLTAIC PANELS INCREASE CURRENT

114KWh ESS



TSI BMS CE MSD UN38.3

You can also check out the Ways to Increase the Panel Efficiency. Solar Panel Degradation Curve. The below graph shows the degradation of solar panel's efficiency over time which helps us to understand their long-term performance. Pic Credit: National Renewable Energy Laboratory Cost of Solar Panels Over Time Graph



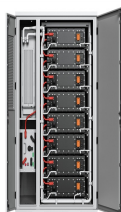
RAUPA OUTDOOR CABINET

ALUMINIUM

OUTDOOR ENERGY STORAGE CABINET

OUTDOOR MODUL CABINET

Solar panels generate electricity when sunlight hits the photovoltaic cells, causing electrons to move and create a current. The amperage produced by a solar panel depends on the amount of sunlight it receives and the efficiency of the cells. For instance, on a sunny day, a solar panel might produce a higher current compared to a cloudy day.



TELECOM CABINET

BRAND NEW ORIGINAL

HIGH EFFICIENCY

Solar panel Current Ratings: Solar panels come with two Current (or Amperage) ratings that are measured in Amps: the voltage will exceed the rated value, leading to an increase in power output. 200 Watts ???



To chain multiple photovoltaic modules ??? like solar panels ??? in an array, you must connect them together and to your portable power station or other balance of system. Cumulative Increase in Current: Each PV panel ???



Solar panel inverter. The solar inverter is a key part of any solar panel system, converting electricity from DC to AC. This needs to happen before the inverter can be installed. The cost of your inverter will be included ???

DO SOLAR PHOTOVOLTAIC PANELS INCREASE CURRENT



This calculator is based on the current Energy Price Cap rate of 24.5p/kWh and a smart export guarantee rate of 15p/kWh. Do solar panels increase home value? As we're MoneySavers, not solar experts, picking solar panel installers isn't our speciality. But a good place to start is the Federation of Master Builders tool below (the FMB is