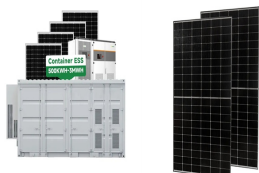


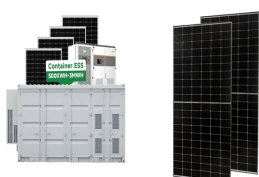
DOES COMMERCIAL AND INDUSTRIAL ENERGY STORAGE REQUIRE A SHED



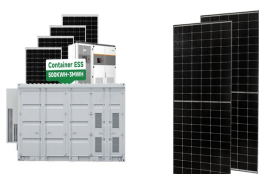
Are commercial industrial sheds a good investment? Industrial sheds are primarily designed for use in tough working environments, but that is far from the end of their potential uses. If you have a large project looming on the horizon, or just an increasing need for storage solutions, commercial industrial sheds are a fantastic resource.



Why should commercial and industrial customers install energy storage systems? There are several benefits for commercial and industrial customers to install energy storage systems at their facilities. Some of the advantages of commercial power storage include:



What are the requirements for a storage shed? To construct a storage shed, limitations apply and it shall comply with building and fire code requirements. Any significant residual materials remaining on the ground after completion shall be removed and properly disposed of, including contaminated soil if necessary.



What are the benefits of commercial power storage? Some of the advantages of commercial power storage include: The benefits of installing battery storage at your facility can be great; however, one must evaluate the total cost of ownership of an energy storage system to determine if it's a good fit. Let's explore the costs of energy storage in more detail.

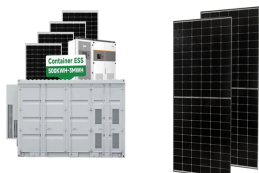


Should you commercialize and rent out an industrial shed? If you wish to commercialize and rent out your industrial shed, you stand to make more profit as the installation is often preferred by many compared to other buildings. The appearance itself can make it your selling point as it stands out from the rest. An industrial shed's biggest advantage is that it is multifunctional.

DOES COMMERCIAL AND INDUSTRIAL ENERGY STORAGE REQUIRE A SHED



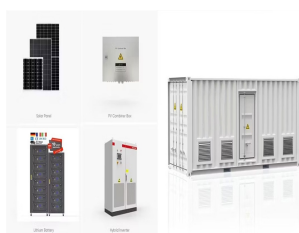
What are the benefits of an industrial shed? An industrial shed offers flexibility as it can be used for various purposes such as a residence, office, warehouse, retail store, or workshop, and more. The same installation can serve different functions.



A shed on your property is an ideal way to expand your storage space. Struggling to squeeze tools and equipment into a garage or basement can be a real hassle, and if you are a DIY type, sheds are simple to build and even a?



30kW, & , , , , a? , , a?



FAQs about building a commercial shed Do I need planning permission to build a commercial shed? In most cases, yes. Permits are usually required for commercial storage sheds larger than 10m². However, Australia's building a?



Discover key Industrial and Commercial Energy Storage Application Scenarios, including peak shaving, renewable integration, microgrids, EV charging, and backup power. Learn how C&I storage enhances energy a?

DOES COMMERCIAL AND INDUSTRIAL ENERGY STORAGE REQUIRE A SHED



The state has updated its Build Energy Efficiency Standards to include requirements for solar plus storage on all commercial and multifamily homes, while also requiring that all new residential



Many fall into the trap of believing a large shed is a "set and forget" investment. But like any investment, it requires ongoing maintenance to keep its value. Here are some handy tips for keeping a large shed in tip-top shape: a?|



Installing wind turbine battery storage systems allows you to reduce your carbon footprint and is probably one of the biggest advantages that benefit the entire planet. Wind turbines produce 100% clean energy, and by using battery a?|



At the state level, regulatory commissions typically establish specific rules that govern the interconnection of energy storage systems to the grid. They also provide guidance a?|



Battery Energy Storage Systems (BESS) are one way to store energy so system operators can use their energy to soft transition from renewable power to grid power for uninterrupted supply. Ultimately, battery storage can a?|

DOES COMMERCIAL AND INDUSTRIAL ENERGY STORAGE REQUIRE A SHED



Subject to the type of shed you require the average cost per m2 for kit-only industrial and farm sheds can be broken down as follows: Bulk storage shed (grain shed, fertiliser shed, feed shed): \$180 a?? \$200/m2* Typical size: a?|



Explore the benefits of industrial and commercial energy storage solutions in this article. Discover how advanced business energy storage systems can enhance energy efficiency, reduce costs, and support sustainability goals.



As a starting point, the cost of an industrial shed is typically between \$400 and \$500 per square metre, depending on its specifications. This price range gives an indication of the cost of a basic industrial shed. However, a?|



Our commercial and industrial energy storage solutions offer from 30kW to 30+MW. We have delivered hundreds of projects covering most of the commercial applications such as demand charge management, PV self a?|



Unlike large-scale energy storage plants, the Energy Management System (EMS) for industrial and commercial applications does not need to consider grid scheduling requirements. Instead, a?|

DOES COMMERCIAL AND INDUSTRIAL ENERGY STORAGE REQUIRE A SHED



Why buy a premium steel industrial shed ? Here are some of the key advantages: Durability: Steel is an incredibly durable and strong material, which can withstand harsh weather conditions, fire, and other hazards that may cause damage to a?



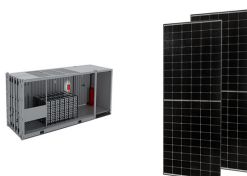
Finding the Ideal Location: For a shed business, location is key. You require space for showcasing sheds, production, and storage, especially if you're a dealer. Hunting for a cost-effective, spacious site that's easily a?



Commercial and Industrial energy storage is one of the main types of user-side energy storage systems, which can maximize the self-consumption rate of photovoltaics, reduce the electricity a?



Off-grid Use. Energy storage systems can enable off-grid applications to operate 24*7 when paired with renewable energy. The energy storage system must be sized well to include battery degradation year by a?



Commercial energy storage is a game-changer in the modern energy landscape. This article aims to explore its growing significance, and how it can impact your energy strategy. We're delving into how businesses are a?