

DOES THE ENERGY STORAGE INDUSTRY USE QUICK-DRYING GLUE



Quick-Dry Glue Tips and Tricks. How to Speed Up Glue Drying. Apply a thin layer: A thinner layer of adhesive dries faster. Use accelerants: Certain glues can be paired with accelerants to expedite the curing process. a?|



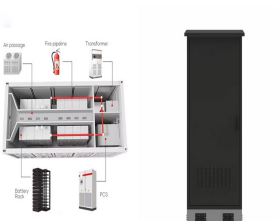
4 Ounces Craft Glue Quick Dry Clear, Craft Glue with 4 Precision Tips, Anti-Wrinkle Crafting Glue, Craft Glue Bottles with Fine Tip Perfect for Paper Crafts, Card Making and More Depending on the product, the standards a?|



Another type of glue used in these industries is structural adhesive, which is critical for the bonding of composite materials used in aircraft manufacturing. Glue is also used in the production of automotive parts, including interior upholstery a?|



It is sufficient to apply the adhesive on one side. Brush the surface to be bonded thoroughly with the PU glue, but do not use too much of it, otherwise the glue could leak out at the joints. If adhesive does leak, apply it a?|



Or wished for a magic potion to make the glue dry instantly? Well, your wish might have just come true! Let's dive into the world of super glue accelerators and discover how they're the secret to stronger and faster bonds. (commonly a?|

DOES THE ENERGY STORAGE INDUSTRY USE QUICK-DRYING GLUE



Phenol Formaldehyde Resin Glue (PF): PF glue is typically used in the woodworking industry and should be applied through a pressurized system to ensure the glue penetrates the wood fibers. This type of glue requires heat a?|



This is a thick, quick-drying glue type with great tensile strength. But things can get messy if you don't know how to use them! Other options that work with cardboard include super glue, fabric glue, white glue, wood glue, craft a?|



Get ready to say goodbye to the waiting game when it comes to drying LOCTITE adhesive. Whether you're a DIY enthusiast or a seasoned pro, we all know how frustrating it can be to sit around twiddling our thumbs while glue takes forever a?|



With its easy-to-use applicator and quick-drying formula, this product ensures a strong and durable bond in just seconds, making it perfect for on-the-go repairs and projects. E6000 Industrial Strength Adhesive is a go a?|



According to glue manufacturers, it takes about 24 hours for superglue to fully cure. However, you may find slightly varying lengths of time if you look to see how long does super glue take to dry for a specific brand of a?|

DOES THE ENERGY STORAGE INDUSTRY USE QUICK-DRYING GLUE



Polycarbonate requires super glue or quick set glue, while acetate and PVC require quick set glue. CA glue is ideal for plastic bonding and repair. It is fast, easy to use, and can bond different types of plastics. However, you need to a?|



That's why UHU All Purpose Adhesive takes the lead with its quick-drying formula. Within minutes of application, this adhesive begins to dry, allowing you to move forward with your project with minimal delay. However, it's important to a?|



2) Elmer's Craft Bond Fast Drying Glue 3) Tombow Mono Multi Liquid Glue 4) Gorilla Super Glue Gel 5) Beacon 527 Multi-use Glue. In conclusion. In conclusion, 's no need to wait hours for your crafts to dry anymore a?? invest in a?|



Energy storage and power adhesives include structural adhesives, electrically conductive adhesives, thermal adhesives, and thread lockers. Structural adhesives are designed to withstand load-bearing forces and provide high a?|



The Effectiveness of Adhesives in the Wind Power Industry; Wind Energy Adhesives and Sealants; Wind Industry Solutions; Gluespec is Your Source for Energy Storage and Power Adhesives. Gluespec's comprehensive and quality a?|

DOES THE ENERGY STORAGE INDUSTRY USE QUICK-DRYING GLUE



T7000 Glue is a popular choice for electronics, phone repairs, and jewelry making. It dries clear and flexible, making it ideal for projects that require a strong yet flexible bond. For more information on how long it takes T7000 glue to dry, a?|



Step 5: Patience is Key: Allow the glue to dry naturally. Accelerating the process with heat can weaken the bond. Conclusion: Speeding Up Glue Drying a?? The Sticky Truth. When it comes to speeding up the drying process a?|



Drying time can be a game-changer: If you are working on a time-sensitive project, opt for a glue with a quick drying time. However, keep in mind that faster drying glues may have a shorter open time, so work quickly before the glue a?|



Electric power grids around the world utilise ESS to optimise their distribution networks. Many different forms of energy storage systems exist; here we explore 3 main categories. Batteries are the most well-known energy a?|



HUITIAN Solvent-free Packaging Adhesive: Revolutionizing Green Packaging with Innovation HUITIAN Solvent-free Packaging Adhesive: Revolutionizing Green Packaging with Innovation In the rapidly evolving landscape of a?|

DOES THE ENERGY STORAGE INDUSTRY USE QUICK-DRYING GLUE



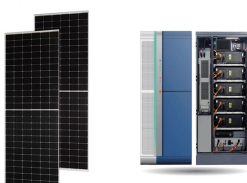
Leave the glued surfaces untouched for at least 24 hours to allow it to dry completely. Do not use any gadgets or techniques to speed up the drying process as it can affect the bond quality and cause the glue to break apart. This will a?|



Using a fresh bottle will ensure that your glue dries as quickly as it's supposed to. 2. Do Not Dilute. Never water down your glue in order to make it dry faster. This does not work in the way that you think. Instead, the diluted a?|



Amy holds a BS in Industrial Design from Philadelphia University. She worked as a graphic designer before starting her own business. Choose a quick-dry glue if possible. Quick-dry adhesives are designed to cure faster a?|



Quick-drying glue can break materials, and slow-drying glue can be waterproof. They each have their own advantages, so it is really hard to say which one is better or worse. a?|