

DOMESTIC RESEARCH ON FLYWHEEL ENERGY STORAGE



The flywheel energy storage system (FESS) offers a fast dynamic response, high power and energy densities, high efficiency, good reliability, long lifetime and low maintenance ???



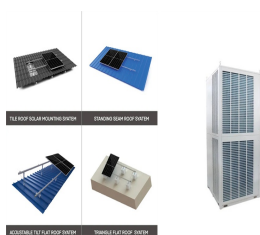
This paper provides an overview of a 100 kw flywheel capable of 100 kW-Hr energy storage that is being built by Vibration Control and Electromechanical Lab (VCEL) at Texas A& M University and Calnetix Technologies. The paper concludes with recommendations for future research. Flywheel is a promising energy storage system for domestic



An overview of system components for a flywheel energy storage system. Fig. 2. A typical flywheel energy storage system [11], which includes a flywheel/rotor, an electric machine, bearings, and power electronics. Fig. 3. The Beacon Power Flywheel [12], which includes a composite rotor and an electric machine, is designed for frequency



Energy storage systems (ESSs) are the technologies that have driven our society to an extent where the management of the electrical network is easily feasible. The balance in supply ???



In this paper, a grid-tied flywheel-based energy storage system (FESS) for domestic application is investigated with special focus on the associated power electronics control and energy management. Flywheel is a promising energy storage system for domestic application, uninterruptible power supply, traction applications, electric vehicle charging ???

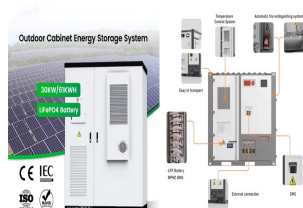
DOMESTIC RESEARCH ON FLYWHEEL ENERGY STORAGE



One energy storage technology now arousing great interest is the flywheel energy storage systems (FESS), since this technology can offer many advantages as an energy storage solution over the alternatives. Flywheel is a promising energy storage system for domestic application, uninterruptible power supply, traction applications, electric



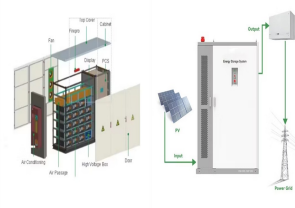
This review presents a detailed summary of the latest technologies used in flywheel energy storage systems (FESS). This paper covers the types of technologies and systems employed within FESS, the range of materials used in the production of FESS, and the reasons for the use of these materials. grid leveling and power storage for domestic



Flywheel Energy Storage (FES) systems refer to the contemporary rotor-flywheels that are being used across many industries to store mechanical or electrical energy. Instead of using large iron wheels and ball bearings, advanced FES systems have rotors made of specialised high-strength materials suspended over frictionless magnetic bearings



The station consists of 12 flywheel energy storage arrays composed of 120 flywheel energy storage units, which will be connected to the Shanxi power grid. The project will receive dispatch instructions from the grid and perform high-frequency charge and discharge operations, providing power ancillary services such as grid active power balance.

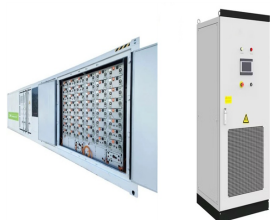


Research on frequency modulation application of flywheel energy storage system in wind power generation Lili Jing * 1Key Laboratory of High Speed Signal Processing and Internet of Things Technology Compared with western developed countries, the research on energy storage flywheel in China started late, especially the application of energy

DOMESTIC RESEARCH ON FLYWHEEL ENERGY STORAGE



Flywheels as mechanical batteries. Flywheel Energy Storage (FES) is a relatively new concept that is being used to overcome the limitations of intermittent energy supplies, such as Solar PV or Wind Turbines that do not produce electricity 24/7. A flywheel energy storage system can be described as a mechanical battery, in that it does not create electricity, it simply converts and ???



energies Article A Lab-scale Flywheel Energy Storage System: Control Strategy and Domestic Applications Elhoussin Elbouchikhi 1, Yassine Amirat 1, Gilles Feld 1, Mohamed Benbouzid 2,3, and Zhibin Zhou 1 1 ISEN Yncr?a Ouest,UMR CNRS 6027 IRDL, Rue Cuirass? Bretagne, 29200 Brest, France; elhoussin.elbouchikhi@isen-ouest.yncrea (E.E.); yassine.amirat@isen ???



Flywheel energy storage: The first FES was developed by John A. Howell in 1883 for military applications. [11] 1899: Nickel-cadmium battery: A few research [70], [71], [72] found that installing PCMs inside hot water tanks can ???



A review of flywheel energy storage systems: state of the art and opportunities. March 2021; License; V arious ???wheel energy storage research groups[96, 13, 97, 98, 33, 99, 100,



The study also includes recent research on new energy storage types, as well as significant advances and developments. grid leveling and power storage for domestic and industrial electricity

DOMESTIC RESEARCH ON FLYWHEEL ENERGY STORAGE



this paper, a grid-tied flywheel-based energy storage system (FESS) for domestic application is investigated with special focus on the associated power electronics control and energy storage



41 system and discusses its application and domestic research status. It is not difficult to conclude that the rotor material of the flywheel will be replaced by composite materials in the future,



One energy storage technology now arousing great interest is the flywheel energy storage systems (FESS), since this technology can offer many advantages as an energy storage solution over the



Flywheel energy storage has the advantages of high power density, long service life and environmental friendliness. Its shortcomings are mainly low energy Domestic units engaged in flywheel research mainly include Beijing University of Aeronautics and Astronautics and Tsinghua University. The two universities are working together to develop



Downloadable! Flywheel is a promising energy storage system for domestic application, uninterruptible power supply, traction applications, electric vehicle charging stations, and even for smart grids. In fact, recent developments in materials, electrical machines, power electronics, magnetic bearings, and microprocessors offer the possibility to consider flywheels as a

DOMESTIC RESEARCH ON FLYWHEEL ENERGY STORAGE



This paper presents an overview of the flywheel as a promising energy storage element. Electrical machines used with flywheels are surveyed along with their control techniques. Loss minimization



The operation of the electricity network has grown more complex due to the increased adoption of renewable energy resources, such as wind and solar power. Using energy storage technology can improve the stability and quality of the power grid. One such technology is flywheel energy storage systems (FESSs). Compared with other energy storage systems, ???



On April 10, 2020, the China Energy Storage Alliance released China's first group standard for flywheel energy storage systems, T/CNESA 1202-2020 "General technical requirements for flywheel energy storage systems." Development of the standard was led by Tsinghua University, Beijing Honghui Energy C



Beacon's flywheel for grid storage cost a whopping \$3 million per megawatt-hour. According to an analyst at Boston-based Lux Research, energy storage services could be a \$31.5-billion market



Video Credit: NAVAJO Company on The Pros and Cons of Flywheel Energy Storage. Flywheels are an excellent mechanism of energy storage for a range of reasons, starting with their high efficiency level of 90% and estimated long lifespan. Flywheels can be expected to last upwards of 20 years and cycle more than 20,000 times, which is high in ???

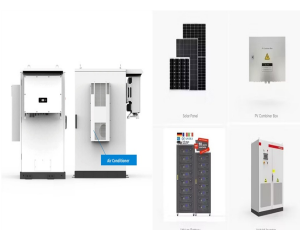
DOMESTIC RESEARCH ON FLYWHEEL ENERGY STORAGE



Fig. 1 has been produced to illustrate the flywheel energy storage system, including its sub-components and the related technologies. A FESS consists of several key components: (1) A rotor/flywheel for storing the kinetic energy. (2) A bearing system to support the rotor/flywheel. Various flywheel energy storage research groups



This review presents a detailed summary of the latest technologies used in flywheel energy storage systems (FESS). This paper covers the types of technologies and systems employed within FESS, the range of materials used in the production of FESS, and the reasons for the use of these materials. Furthermore, this paper provides an overview of the ???



The flywheel energy storage has the advantages of high efficiency, fast response, long service lifespan, less demands on operation and maintenance, The core technology of sodium sulfur battery has been mastered by NGK. The domestic research in sodium sulfur battery is carried out very early. However the progress is relatively slow. Fig. 1.



Kinetic Energy-Based Flywheel Energy Storage (FES): A flywheel is a rotating mechanical device that stores rotating energy. When a flywheel needs energy, it has a rotating mass in its core that is powered by an engine. The spinning force propels a tool that generates energy, like a slow-moving turbine.

