

# DOUBLE-GLASS PHOTOVOLTAIC PANEL INSTALLATION MEDIUM VOLTAGE



Are photovoltaic modules dangerous? Photovoltaic modules can produce DC electricity when exposed to light and therefore can produce an electrical shock or burn. DC voltage of 30 Volts or higher is potentially lethal. Modules produce voltage even when are not connected to an electrical circuit or load.



What is the minimum wire size for a solar PV system? JA Solar recommends installers use only sunlight resistant cables qualified for direct current (DC) wiring in PV systems. The minimum wire size should be 4mm<sup>2</sup>(12AWG). Rating Required Minimum Field Wiring Cables should be fixed to the mounting structure in such a way that mechanical damage of the cable and/or the modules is avoided.



Can a rooftop PV system be installed on a roof? Rooftop PV systems should only be installed on rooftops capable of handling the additional weighted load of PV system components, including modules, and have a complete analysis of the structure performed by a certified building specialist or engineer.



This document is the installation manual for JA Solar PV bifacial double-glass modules. It provides guidance on safety, product identification, installation conditions, mechanical installation, electrical installation, grounding, and operation and maintenance of the modules. The manual outlines electrical and mechanical requirements to ensure safety and optimal performance ???



650W Bifacial High-Power Double Glass Monocrystalline Solar Panel FV;  
New Sale! R 2,950.00 R 1,999.00. (PID) compared to some other types of solar panels. This makes them suitable for installation in harsh environments. -Maximum System Voltage: 1500V-Open ???

# DOUBLE-GLASS PHOTOVOLTAIC PANEL INSTALLATION MEDIUM VOLTAGE



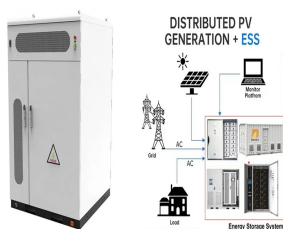
Bifacial photovoltaic panels 430W - Renesola RS41-410-430NBG-E2 double glass The Renesola RS41-410-430NBG-E2 bifacial photovoltaic panels are a top-of-the-line option for those looking to harness the power of the sun. These ???



More durable: Glass-glass bifacial panels, with their double-sided glass construction, can be more durable and resistant to environmental factors compared to traditional panels. Disadvantages. Higher initial cost: Bifacial solar panels generally have a higher upfront cost compared to monocrystalline panels, which may be a barrier for some buyers.



SNEC 11th International Photovoltaic Power Generation Conference & Exhibition, SNEC 2017 Scientific Conference, 17-20 April 2017, Shanghai, China The Performance of Double Glass Photovoltaic Modules under Composite Test Conditions Jing Tang\*, Chenhui Ju, Ruirui Lv, Xuehua Zeng, Jun Chen, Donghua Fu, Jean-Nicolas Jaubert, Tao Xu CSI Cells Co. LTD, ???

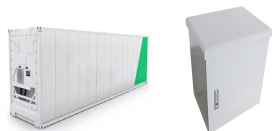


LR6-60DG-\*\*\*M LR6-72DG-\*\*\*M IEC???UL double glass LR6-60PD-\*\*\*M LR6-72PD-\*\*\*M IEC???UL double glass The mechanical and electrical installation of photovoltaic modules shall be in accordance with applicable regulations (H indicates High, M indicates Medium, L indicates Low) 3. Serial Number label: A unique serial number which is laminated

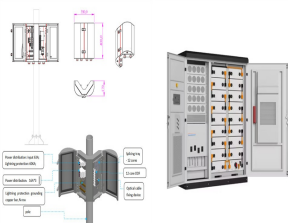


? 1/4 ?? 1/4 ? DAS SOLAR CO.,LTD. 4 The slope of tested module is 5 in/ft (127 mm/305 mm). To maintain the corresponding fire prevention level, the tilt angle should be less than 5 in/ft (127 mm/305 mm) when the modules are mounted on the

# DOUBLE-GLASS PHOTOVOLTAIC PANEL INSTALLATION MEDIUM VOLTAGE



Bifacial solar panels 460W - Renesola RS4-440-460MBG-E1 double glass  
The Renesola RS4-440-460MBG-E1 Double Glass Bifacial Solar Panels are an exceptional energy solution designed to deliver high efficiency and long-lasting performance. With a powerful 460W output, these solar panels combine cutting-edge technology with durable construction, making them an ideal ???



What are Dual Glass Solar Panels? Dual Glass, aka. Double Glass Solar Panels are frameless solar panels that have glass in the front & glass at the back without using any aluminum frame to support it which gives the solar panel a window glass-like shape. This type of solar panel is a good option for being stacked together for different applications due to its thin thickness which ???



6) Double Glass PV System configuration should follow suggestions from battery manufacture when using storage battery in photovoltaic system. 7) DO NOT replace parts of or all of the rooftop and wall materials by double glass modules. 8) DO NOT touch any electric parts of double glass module. Please use insulation tools to connect all electrical



W Solar Panel from Fivestar uses Mono Double Glass Bifacial technology ??? an efficient, high-performance solution for residential and commercial use. Its bifacial design generates up to 30% more energy, while the certified safety standards and ?3% power production tolerance ensure reliable output. Easy to handle and install with a 25-year warranty, this sustainable, ???



Solar Panel Installation. Home Solar Panels; Commercial & Industrial; Solar Plants; Solar Projects. Sharp launches 540W bifacial double glass PV panel The module is designed for a system voltage up to 1,500 V, and is printed with white reflectors in the gaps between the cells on the rear glass to increase light absorption on the front

# DOUBLE-GLASS PHOTOVOLTAIC PANEL INSTALLATION MEDIUM VOLTAGE



LR6-60DG-\*\*\*M LR6-72DG-\*\*\*M IEC??UL double glass LR6-60PD-\*\*\*M LR6-72PD-\*\*\*M IEC??UL double glass The mechanical and electrical installation of photovoltaic modules shall be in accordance with applicable regula- (H indicates High, M indicates Medium, L indicates Low) 3. Serial Number label: A unique serial number which is laminated



Photovoltaic modules can produce DC electricity when exposed to light and therefore can produce an electrical shock or burn. DC voltage of 30 Volts or higher is potentially lethal. Modules produce voltage even when are not connected to an electrical circuit or load. Please use insulated tools and rubber gloves when working with modules in sunlight.



JA Solar PV Bifacial Double-glass Modules Installation Requirements may also vary with system voltage, and for DC or AC application. Contact local authorities for governing regulations. 3 General 3.1 Product Identification Each module has three labels providing the following information: 1. Nameplate: describes the product type; Peak power



Introducing the Renesola RS8-595-605MBG-E1 Bifacial Solar Panels: the future of solar energy is here. This state-of-the-art 605W solar panel system combines innovative double glass technology with exceptional efficiency to deliver ???



Photovoltaic modules can produce DC electricity when exposed to light and therefore can produce an electrical shock or burn. DC voltage of 30 Volts or higher is potentially lethal.

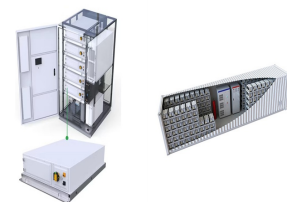
# DOUBLE-GLASS PHOTOVOLTAIC PANEL INSTALLATION MEDIUM VOLTAGE



The JA Solar 595W Mono N-Type Bifacial Double Glass High Efficiency LB MC4 (JAM72D40 575-600/MR) solar panel is a 595W monocrystalline bifacial module with 144 Mono-16BB cell technology. JA Solar offers a high-efficiency module, which, thanks to its half-cell configuration, offers high power output, better temperature coefficient, lower efficiency loss against shading, ???



AE Alternative Energy GmbH (AE Solar) Solar Panel Series AE MD-144BD 530-550W double-glass. Detailed profile including pictures, certification details and manufacturer PDF. Notably, the panels demonstrate a distinct increase in efficiency under medium to high radiation conditions, as observed in their performance curve across different



Do not use panels near equipment or locations where flammable gases can be generated or can collect. Fire resistance of Suntech's bifacial and double glass module is Class C according to IEC61730-2, and is suitable for mounting over a class A roof. Do not install modules on a roof or building during strong winds in case of accidents.



High Efficiency Monocrystalline HJT Bifacial Double Glass Photovoltaic Solar Panel Module Based on 210mm Solar Cell. On different installation environments, the rear side power generation gain is between 10-30%. Electrical Specification. Maximum Power ( $P_{max}/W$ ) 560 565 570 575 580. Maximum Power Voltage ( $V_{mp}/V$ ) 34.17 34.35 34.53 34.71 34.88.



The tilt Angle of PV Modules refers to the Angle between the Modules' surface and the ground plane. The Modules get maximum output power when facing directly into the sun. For details on the optimal installation inclination, refer to the standard Solar PV installation guide or consult a ???

# DOUBLE-GLASS PHOTOVOLTAIC PANEL INSTALLATION MEDIUM VOLTAGE



The tilt Angle of PV Modules refers to the Angle between the Modules" surface and the ground plane. The Modules get maximum output power when facing directly into the sun. For details on the optimal installation inclination, refer to the standard Solar PV installation guide or consult a reliable solar system installation company.



PV Solar Panels And Double Glass Module, Select Fuying New Materkals! More Power Generation High Safety Performance Long Life Beautiful Easy To Install. Transparent BIPV Module; Maximum system voltage: 1500V. Maximum system current: 15-16A. Tolerance range: 0~5W. View More .



? 1/4 ?? 1/4 ? DAS SOLAR CO.,LTD. 4 A minimum distance of 10 cm between the roof plane and the module is generally recommended. The slope of tested module is 5 in/ft (127 mm/305 mm).To maintain the corresponding fire prevention level, the tilt angle should be less than 5 in/ft (127 mm/305 mm)when the modules are mounted on the



EVO 6 Pro 132 Half Cells HJT 680W 685W 690W 695W 700W Bifacial Dual Glass Solar Module. In order to create the ultimate cost-effective product, SunEvo Solar launched a new generation of ultra-high efficiency HJT solar modules, the Evo 6 Pro monocrystalline N-type HJT bifacial double glass 680-700Watt photovoltaic solar panel.The new series integrates 210mm silicon wafers, ???



EVO 6 Series Mono PERC 132 Half Cells 650W 655W 660W 665W 670W Bifacial Dual Glass Solar Module. Based on 210mm silicon wafer and 132 half-cut mono-crystalline PERC cell, the Evo 6 Series photovoltaic panels comes with several innovative design features allowing higher output power up to 670W. Excellent temperature coefficient and low irradiation performance ???

# DOUBLE-GLASS PHOTOVOLTAIC PANEL INSTALLATION MEDIUM VOLTAGE

---



clamps can install the PV modules. (about 1m) STEP 3: Install the PV modules Insert the PV module into the clamp, and then tighten the nut. M8 ss304(16N?m~20N?m) Installation Example B - For Aluminum rails- For TSM-xxx system STEP 1: Install the clamp Insert clamp into the connector racking. M8 ss304 STEP 2: Install the module