

ELECTRIC DRILLING FOR PHOTOVOLTAIC PANELS



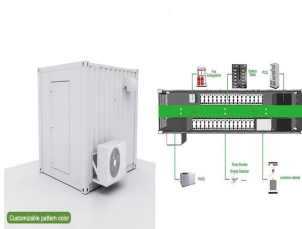
A junction box is a small, box-like enclosure responsible for connecting and protecting the electrical connections in a solar panel. It provides a safe and secure environment to ensure the connections are shielded from environmental factors and accidental contact. A junction box may also include diodes, connectors or terminals to improve



A solar panel installation drilling rig is designed to install solar panels on the piles, while a solar foundation drilling rig is used to create a solid foundation for the solar panels. A solar energy drilling rig is ideal for drilling ???



I'm guessing at this point it just doesn't work. I can power solar panel, (shows green light when in sunlight), I can connect wire to both drill and panel, but cannot connect the two at that distance. If anyone made it work I'd love to know how. I've tried connecting drill first and panel first but neither does anything but show a ~2meter green



Final Thoughts. Performing your own DIY solar panel installation is an empowering step towards energy independence and sustainability. Throughout our guide, we've explored the essentials of planning, the importance of choosing the right tools and materials, and the detailed steps to install your system safely.



DTH hammer drilling requires less torque and down pressure than auger drilling as an air compressor is providing the force behind the hammer blows. The compressor must supply sufficient air pressure (PSI) and volume of air (CFM) which are both determined by the bore diameter, drill rod diameter and borehole depth.

ELECTRIC DRILLING FOR PHOTOVOLTAIC PANELS



You should know that there are limitations for series solar panel wiring. In the U.S., solar strings are required to feature a maximum voltage of 600V, so solar arrays comply with article 690 section 7 of the National Electrical Code (NEC 690.7).



Hardrock solar pile driver can drive the pile into soil or rock to support the solar panel for solar power station system and guardrail installation, the common application is for Photovoltaic panels installation There are ???



As a general guide. On a sunny day, a 100W solar panel will produce approximately 4-5 amps per hour in full sun. This means that the solar panel would take around 18-25 hours to charge a fully discharged 100AH 12v battery. A solar panel half the size (50w) would take approximately double the amount of time to charge the same size battery.

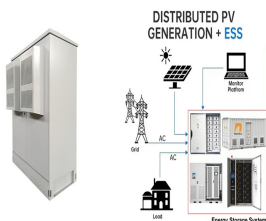


A solar panel wiring diagram (also known as a solar panel schematic) is a technical sketch detailing what equipment you need for a solar system as well as how everything should connect together. There's no such thing as a single correct diagram ??? several wiring configurations can produce the same result.



Example calculation: How many solar panels do I need for a 150m² house ?. The number of photovoltaic panels you need to supply a 1,500-square-foot home with electricity depends on several factors, including average electricity consumption, geographic location, the type of panels chosen, and the orientation and tilt of the panels. However, to get a rough ???

ELECTRIC DRILLING FOR PHOTOVOLTAIC PANELS



A PV module installation drilling rig is used for the installation of photovoltaic modules on the solar panels. A solar panel mounting drilling rig is used to mount solar panels on the piles, while a solar ground screw drilling rig is used to install the ground screws that hold the mounting system in place.



establish safe procedures for working with PV systems. With training and education now readily available through organizations like IHSA, companies working with or near PV systems can update their health and safety policies and safe work procedures for work involving PV systems. A few years ago, IHSA's Roofers Trade Labour-



The ends of the wires were then fitted with electrical crimps. After drilling a 12mm hole through the bottom of the locker (and behind a pelmet), the remainder of the cable was fed through and into the bed base beneath. ???



Solar array mounted on a rooftop. A solar panel is a device that converts sunlight into electricity by using photovoltaic (PV) cells. PV cells are made of materials that produce excited electrons when exposed to light. The electrons flow through a circuit and produce direct current (DC) electricity, which can be used to power various devices or be stored in batteries.



Solar Stack is an innovative and damage-free solar panel mounting system that revolutionizes the way solar panels are installed on roofs. Unlike traditional methods that involve drilling holes and potentially causing damage to the roof, Solar Stack utilizes a spray polyurethane foam adhesive to securely bond the mounts to the roof surface.

ELECTRIC DRILLING FOR PHOTOVOLTAIC PANELS



Install a 70-amp dual pole circuit breaker in the electrical service panel for use by the PV system (label the service panel) (RERHPV Guide 3.4) M2301 Solar Energy Systems (Solar Thermal Energy Systems in 2015, 2018, and 2021 IRC) - See requirements for solar water heating systems.



Solar Photovoltaic (PV) panels are generally installed on a roof and use the energy from the sun to power any electrical appliance in your home, including electric radiators. This electricity is free to produce and is great for the environment as no carbon is given off during the production process, unlike electricity produced by a typical electricity provider.



Learn how to stay safe while working with or around solar panels. Statistics. 51% expected growth in solar PV installer jobs by 2029, making it the 3rd fastest growing occupation; Between 2011 and 2019, 650 solar PV installers were injured on the job; 51% of injured solar PV installers were on the job for 1-5 years; PV Installation Electrical



Next time you spot a solar panel, tip your hat to the humble yet heroic machinery that made it all possible. After all, every superhero needs a sidekick, and in the world of solar energy, the Crawler PVGSDM is just that! The Perks of Going Small. When it comes to the Crawler Photovoltaic Ground Screw Drilling Machine, smaller is surprisingly



Solar energy consumption has significantly increased in recent years, even in India. With installations increasing annually, the installed Solar energy capacity is 85.47 GW as of June 2024. The question is, how does an electric vehicle charging station with a solar PV Panel work? Let's understand a little more in detail.

ELECTRIC DRILLING FOR PHOTOVOLTAIC PANELS



See also: Install Solar Panels On A Roof Without Drilling (Do This!)

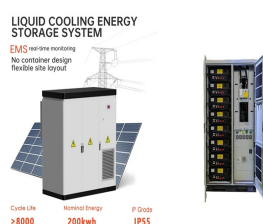
Materials and Equipment to Purchase. electrical safety, or heavy lifting, acing the unboxing choreography takes time, and safety should never be ???



The Solar Panel generates Electricity when positioned in direct sunlight. Use an Electricity Tool to connect it to Benches to provide power. Contrary to its description, the Solar Panel needs to "see" the sun itself, not just be in a sunlit ???



An electrical conduit is a thick-walled tubing made of metal, plastic, or fiber used to protect and route electrical wires. During your solar energy system installation, the specialist will route the conduit from each solar array to your solar inverter, ???



The solar panel installers normally arrange the scaffolding. Typically, it goes up a day or two before the solar panel installation. 9 times out of 10, the company that puts the scaffolding up is a sub-contractor to the solar panel installer. This is important.



Metal roofs combined with renewable energy technologies can create a perfect combination of lightweight, long-lasting, and affordable solution for Solar Electric and Solar Hot Water systems.. There are numerous benefits ???

ELECTRIC DRILLING FOR PHOTOVOLTAIC PANELS



STC and NOCT ??? Solar Panel Test Conditions Explained Solar PV panels come in a variety of different technologies and sizes, so it is important to be able to compare them fairly to one another. International standards have been developed to do just that, and the electrical ratings displayed on solar panel datasheets follow these ??? STC and NOCT ??? Solar Panel Test ???