

ENAMEL ENERGY STORAGE WATER TANK

PICTURE



Why should you choose AquaTank enamel storage tank? Ideal for collective buildings of all kinds (blocks of flats, hotels, hospitals, schools, universities, and more) where the hot water flow need is not constant, the AquaTank Enamel storage tank range represents excellent value for money.



What are the characteristics of enameled water tank products? Performance characteristics of enameled water tank products 1) Enamel water tank is clean and clean, white and beautiful, so as to ensure that the water quality is not polluted. 2) Strong and durable. Four plates are joined by reinforcement plates and stainless steel ribs, which enhances the



Why is enamel a great feature in storage tanks? But not to worry, we are here to explain to you everything there is to know about enamel and why it is a great feature in storage tanks. Enamel is more commonly known as a protective or decorative coating on metal, ceramic and glassware. It is produced by smelting a mixture of inorganic materials at high temperatures.



How many litres can AquaTank enamel hold? With a capacity of 300 ??? 3000 litres and a pressure of 7 bar, the AquaTank Enamel range can be used in combination with Cetetherm???'s Tap Water Systems (including AquaFirst, AquaEfficiency or AquaGenius), but also accepts electric immersion heaters for additional hot water supply capability.



What is high-strength enameled steel plate water tank? High-strength enameled steel plate water tank is a new type of water tank, which uses HSC series enamel as base glaze and surface glaze to be enameled on the steel

ENAMEL ENERGY STORAGE WATER TANK PICTURE



What are the uses of composite enameled steel plate water tank?
Composite enameled steel plate water tank is mainly used for temporary water tanks such as building water supply regulation, fire fighting water tank, storage water tank, expansion of mining and shuttle system, condensation water tank, building construction, road construction, geological survey



Implementing a fire protection system with water storage tanks can significantly reduce response time. Forward-thinking businesses prioritize investing in fire protection water storage on-site now, rather than facing substantial costs later to rectify fire damage and fines for regulatory violations.



Enamel tanks, also known as glass-fused-to-steel (GFS) tanks, are a versatile and durable solution for various industrial and municipal storage needs. Their unique construction combines the strength of steel with the corrosion resistance of enamel, making them ideal for a wide range of applications. In this guide, we'll delve into the features, benefits, and applications of enamel ???



1. Center Enamel Provides Bottled Steel Tanks for Mining water processing & storage In the ever-evolving world of mining, the efficient management of water resources is a critical aspect that directly impacts operational success and environmental sustainability. Recognizing this, Center Enamel has emerged as a trusted leader in providing innovative ???



Longpu is a leading enterprise in Chinese multi-energy heat storage enamel tank industry, The annual output of all kinds of new energy enamel water tanks is 350,000 sets, with a daily output of 1,200 sets, one every 36 seconds. Longpu will try its best to provide the most advanced and reliable enamel water tank for the demand of multi

ENAMEL ENERGY STORAGE WATER TANK PICTURE



114KWh ESS

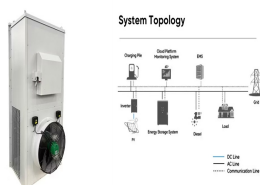


ISO 9001 ISO 14001 CE MCS3 UN38.3

Glass-Fused-to-Steel (GLS) storage tanks have emerged as a highly versatile and indispensable solution, offering a range of advantages that make them an ideal choice for storing various substances, from water to petroleum products. and versatility. Whether used to store cooling water in power generation, renewable energy sources in the



Industrial applications of vitreous enamel are hot water tanks, silos/tanks, heat exchangers and chemical vessels. For these products, the vitreous enamelled steel is chosen from an engineering requirements for the enamel coating for the different liquid storage tank applications. In the above mentioned standards, the following quality



Enamel tank Leader of industry Application fields Biogas biomass process water Water supply and treatment power and energy fuel Oil erosene water coa Storage Diesel r l ing mud reverse osmosis water fly ash silo potable water bitter-brackish water wate r,fresh water arigation water Mineral wood product Stone,tclay/glass Water purifying tank water



Enamel in storage water heaters. We have seen how durable and high-quality enamel coating can be as it can withstand high temperatures and at the same time offer excellent protection. This is why Rheem's storage water heater inner tanks are coated with enamel. Here are more reasons why you should choose storage water heaters that come with



At Center Enamel, we specialize in crafting high-quality food-grade stainless steel tanks tailored to your liquid storage needs. Our tanks are constructed from premium 304 and 316-grade stainless steel, ensuring longevity and reliability. Whether you require a standard size or a custom-made tank to fit your space, we have the expertise to deliver.

ENAMEL ENERGY STORAGE WATER TANK PICTURE



Industrial enameling technology for boilers & hot water tanks. Porcelain enamel is used by leading manufacturers of electric boilers, solar water heater and/or water storage tanks worldwide to ???



China Enamel Coating Tank Water Heater wholesale - Select 2024 high quality Enamel Coating Tank Water Heater products in best price from certified Chinese Machines For Water manufacturers, Water Machinery suppliers, wholesalers and factory on Made-in-China Freestanding 150 200 300 400 500L Big Size Drum Cylinder Vertical Stainless Steel



Center Enamel has more than 30 years of experience in glass-fused-to-steel process water tanks design, manufacture, and installation. Center Enamel Glass-Fused-to-Steel tanks engineering & design, product testing and quality system are in strict accordance with AWWA D103-09, OSHA, ISO/EN 28765, NSF61, API, and NFPA, etc. international standards.



Thanks to GMO water heater dip tube, it can maximize the hot water delivery. There are several units thermostats and heating elements in the middle of the storage water tank, it is electric backup. The enamel coating tank is able to prevent the water heater tank from corrosion and install an anode rod to help avoid corrosion. The temperature



Drinking water includes clean natural springs, well water, river water and lake water, but also includes treated mineral water, pure water, etc. The processed drinking water has the form of bottled water, direct drinking water, tap water, etc. To ensure the safety of drinking water, the non-toxic, harmless, safe and reliable drinking water storage tanks should be selected. Ordinary ???

ENAMEL ENERGY STORAGE WATER TANK PICTURE



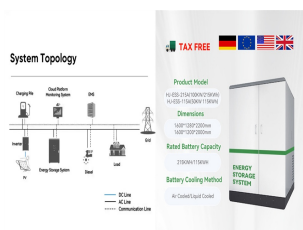
NuLite SUS 304 Stainless Steel Storage Buffer Tank High Quality Factory Wholesale Heat Pump Enamel Water Tank, US \$ 90 - 199 / Unit, New, Hotels, Restaurant, Home Use, Retail, None. Source from Nulite New Energy (guangzhou) Co., Ltd. on Alibaba . NuLite New Energy Water Tank. NuLite Hot Water Boiler Storage Buffer Tank 50L 100L 200L 300L



Industrial enameling technology. for solar boilers & water heater tanks. Porcelain enamel is used by leading manufacturers of electric boilers, solar water heater and/or water storage tanks worldwide to protect their tanks against corrosion. ???



Modular tanks, also known as sectional or panel tanks, are water storage systems comprised of individual panels or modules that are assembled on-site to create a complete tank structure. These panels are typically made from durable materials such as galvanized steel, stainless steel, or fiberglass, offering strength, longevity, and resistance



Double Membrane Roof Biogas Storage Tank / 50000 gallon water storage tanks FOB Price: USD \$4 / Set Min. Order: 1 Sets; Customized Biogas Storage Tank With Enamel Coating on steel plates FOB Price: USD \$4 / Set Min. Order: 1 Sets; Corrosion Resistance Waste Water Storage Tanks / 30000 gallon water storage tank FOB Price: USD \$4 / Set Min. Order

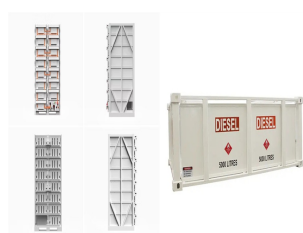


This hygienic quality is particularly important for water storage applications where maintaining water quality is a priority. Versatility in Applications . Water Storage: The primary application of Glass Fused To Steel tanks is in water storage. These tanks are widely used for storing potable water, industrial process water, and wastewater.

ENAMEL ENERGY STORAGE WATER TANK PICTURE



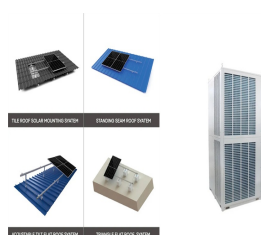
Water Storage Tanks,Stainless Steel,National Storage Tank,Bolted Tank(id:11537595), View quality Bolted Tank, water tank details from Qingdao Jiguang Environmental Energy Technology Co., Ltd. storefront on EC21 .



Center Enamel adhere to the "quality, innovation, integrity, win-win" the core idea, iterated breakthrough in the field of technology innovation, successful in many countries and regions in the tens of thousands of projects, industrial wastewater, waste leachate, eat hutch garbage, biogas engineering, municipal sewage, and other fields, and get the height of the ???



As the leading bolted steel tank manufacturer worldwide, Shijiazhuang Zhengzhong Technology Co., Ltd (also known as Center Enamel), we specialize in the design and fabrication of bolted steel tanks that provide versatile, durable, and sustainable storage options for a wide range of applications, including potable water, wastewater, industrial effluents, and ???



Wansheng - GFS Tanks Engineering Expert . Glass Fused to Steel Tanks are designed to meet the operational and environmental challenges of industrial, commercial and resource sector applications, Glass Fused To Steel Tank and GFS bolted tank are available with high performance and competitive price to global customers for wide applications including ???



Industrial liquid tanks are designed to accommodate diverse liquids, including water, chemicals, petroleum products, acids, and more. Their versatility makes them indispensable in industries such as manufacturing, agriculture, pharmaceuticals, food and beverage, energy, and wastewater treatment.

