

# ENERGY STORAGE POWER STATION OPERATION AND MAINTENANCE SYSTEM

---



Should the energy storage industry shift to a predictive monitoring and maintenance process? This article recommends that the energy storage industry shift to a predictive monitoring and maintenance process as the next step in improving BESS safety and operations. Predictive maintenance is already employed in other utility applications such as power plants, wind turbines, and PV systems.



Why is maintenance management important for PV power plants? Therefore, maintenance management is essential for reliable and effective operation of PV power plants, ensuring uninterrupted system operation and minimizing downtime. Compared to well-established technologies such as hydro, thermal, and wind, the O&M processes for PV systems are not yet fully structured in many operating companies.



How to control and maintain electrochemical storage facilities? Another essential factor for the optimum control and maintenance of electrochemical storage facilities is to provide the plant with a system for processing and interpreting data, issuing reports and managing alarms, both for the technical teams in charge and for customers.



What are the guidelines for battery management systems in energy storage applications? Guidelines under development include IEEE P2686??? Recommended Practice for Battery Management Systems in Energy Storage Applications??? (set for balloting in 2022). This recommended practice includes information on the design, installation, and configuration of battery management systems (BMSs) in stationary applications.



Do energy storage products need periodic maintenance? The requirements for periodic maintenance for energy storage products should be identified by the OEM (IEEE 2010). In settings where predictive analytics maintenance is economical, guidance should also be available from the manufacturer that identifies methodologies for assessing when a

# ENERGY STORAGE POWER STATION OPERATION AND MAINTENANCE SYSTEM

---



product may be approaching a failure mode.

# ENERGY STORAGE POWER STATION OPERATION AND MAINTENANCE SYSTEM



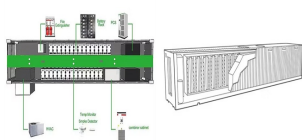
Is there a public energy storage database? Today, the only public energy storage database (maintained by the DOE) focuses primarily on installations, technologies, and applications of energy storage. Creating a clearinghouse of fault information and issues is a more complicated request.



on energy storage system safety." This was an initial attempt at bringing safety agencies and first responders together to understand how best to address energy storage system (ESS) safety. In 2016, DNV-GL published the GRIDSTOR Recommended Practice on "Safety, operation and performance of grid-connected energy storage systems."



There are many links involved in the equipment and operation process of the hydrogen production and energy storage power station, and there are potential hidden dangers such as hydrogen leakage and electrical discharge. Therefore, it is necessary to know the operating status and operating environment of the equipment in real time through the intelligent online operation ???

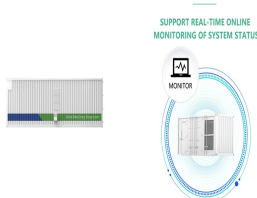


Scope: This document provides alternative approaches and practices for design, operation, maintenance, integration, and interoperability, including distributed resources interconnection of stationary or mobile battery energy storage systems (BESS) with the electric power system(s) (EPS)1 at customer facilities, at electricity distribution facilities, or at bulk ???



deployment expectations for battery storage, only the publications released in 2022 and 2023 are used to create the projections. In addition to the publications in Table 1, we also include a 2020 report by the Electric Power Research Institute (EPRI 2020) for operations and maintenance

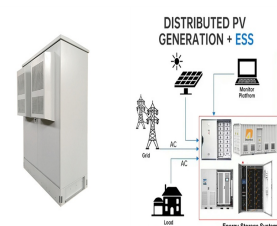
# ENERGY STORAGE POWER STATION OPERATION AND MAINTENANCE SYSTEM



In view of the current increasing new energy installed capacity and the frustration in outputting clean electricity due to limited channel capacity, the new energy intelligence operation system



Integration with Renewable Energy Sources: Germany and Australia integrate pumped storage with renewable sources for a low-carbon energy system, providing reliable backup for solar and wind power. Challenges and Responses: Despite its benefits, pumped storage faces challenges like high capital costs and environmental concerns.



Power plant condition monitoring refers to monitoring the main equipment of the power plant charging and discharging and purchasing backup, the hybrid system considers the remaining energy of its own energy storage system and wind power prediction and information such as electricity prices, backup costs and penalties in the power grid



data sources for the energy storage monitoring system: one is to access the data center through the power data network; the other is to directly collect the underlying data of the energy storage station. The two ways complement each other. The intelligent operation and maintenance platform of energy storage power station is the information



The operation of microgrids, i.e., energy systems composed of distributed energy generation, local loads and energy storage capacity, is challenged by the variability of intermittent energy sources and demands, the stochastic occurrence of unexpected outages of the conventional grid and the degradation of the Energy Storage System (ESS), which is ???

# ENERGY STORAGE POWER STATION OPERATION AND MAINTENANCE SYSTEM



The intelligent operation and maintenance system of energy storage power stations is implemented in an overall architecture of the platform layer and advanced application layer. In principle, the intelligent operation and inspection system in energy storage power stations should not add new sensing points, and utilize existing



To satisfy the growing transmission demand of massive data, telecommunication operators are upgrading their communication network facilities and transitioning to the 5G era at an unprecedented pace [1], [2]. However, due to the utilization of massive antennas and higher frequency bands, the energy consumption of 5G base stations (BSs) is much higher than that ???



A guide to energy storage system maintenance and the use of batteries in renewable energy and backup power applications for optimal performance. manufacturing, and operating battery energy storage systems. Lithium-ion batteries are prone to thermal runaway, where increased temperatures result in the release of energy and further



The goal of this guide is to reduce the cost and improve the effectiveness of operations and maintenance (O& M) for photovoltaic (PV) systems and combined PV and energy storage ???



Current power systems are still highly reliant on dispatchable fossil fuels to meet variable electrical demand. As fossil fuel generation is progressively replaced with intermittent and less predictable renewable energy generation to decarbonize the power system, Electrical energy storage (EES) technologies are increasingly required to address the supply ???

# ENERGY STORAGE POWER STATION OPERATION AND MAINTENANCE SYSTEM



In 2021, about 2.4 GW/4.9 GWh of newly installed new-type energy storage systems was commissioned in China, exceeding 2 GW for the first time, 24% of which was on the user side [1]. Especially, industrial and commercial energy storage ushered in great development, and user energy management was one of the most types of services provided by energy ???



Large scale renewable energy, represented by wind power and photovoltaic power, has brought many problems for the safe and stable operation of power system. Firstly, this paper analyzes the main problems brought by large-scale wind power and photovoltaic power integration into the power system. Secondly, the paper introduces the basic principle and engineering ???



7 Power System Secondary Frequency Control with Fast Response Energy Storage System 157 7.1 Introduction 157 7.2 Simulation of SFC with the Participation of Energy Storage System 158 7.2.1 Overview of SFC for a Single-Area System 158 7.2.2 Modeling of CG and ESS as Regulation Resources 160 7.2.3 Calculation of System Frequency Deviation 160 7.2.4 ???



Energy storage systems (ESSs) can enhance the performance of energy networks in multiple ways; they can compensate the stochastic nature of renewable energies and support their large-scale integration into the grid environment. Energy storage options can also be used for economic operation of energy systems to cut down system's operating cost. By ???

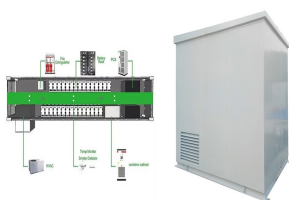


Energy storage configuration is of great significance for the safe and stable operation of microgrids [1, 2] recent years, with the continuous growth of energy storage equipment, the reports of energy storage station accidents have also increased, which has brought serious threats to the safe operation of microgrids [3, 4]. The operation and ???

# ENERGY STORAGE POWER STATION OPERATION AND MAINTENANCE SYSTEM



The National Renewable Energy Laboratory (NREL) released the 3rd edition of its Best Practices for Operation and Maintenance of Photovoltaic and Energy Storage Systems in 2018. This guide encourages adoption of best practices to reduce the cost of O& M and improve the performance of large-scale systems, but it also informs financing of new projects by making cost more ???



Life cycle cost (LCC) refers to the costs incurred during the design, development, investment, purchase, operation, maintenance, and recovery of the whole system during the life cycle (Vipin et al. 2020). Generally, as shown in Fig. 3.1, the cost of energy storage equipment includes the investment cost and the operation and maintenance cost of the whole ???



Battery Energy Storage Systems, when equipped with advanced Power Conversion Systems, can provide essential voltage support to the grid. By offering a decentralized, scalable, and flexible solution, BESS not only enhances voltage stability but also supports the broader goal of transitioning to renewable energy and reducing the reliance on ???



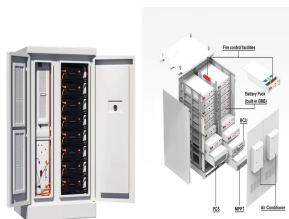
managing energy storage systems. Predictive maintenance involves monitoring the components of a system for changes in operating parameters that may be indicative of a pending fault. ???



1. Energy Storage Systems Handbook for Energy Storage Systems 6  
1.4.3 Consumer Energy Management i. Peak Shaving ESS can reduce consumers' overall electricity costs by storing energy during off-peak periods when electricity prices are low for later use when the electricity prices are high during the peak periods. ii. Emergency Power Supply



# ENERGY STORAGE POWER STATION OPERATION AND MAINTENANCE SYSTEM



The energy storage systems (ESSs) are useful tools to mitigate these challenges. ESSs, by adding flexibility and controllability, play an irreplaceable role in improvement of the power systems operation [2-6]. In the past years, ESSs have used for ???



The application of PV power forecast and energy storage devices to power system operation is necessary. In this study, we propose a method for determining and modifying



Best Practices for Operation and Maintenance of Photovoltaic and Energy Storage Systems; 3rd Edition. National Renewable Energy Laboratory, Sandia National Laboratory, SunSpec Alliance, and the SunShot National Laboratory Multiyear Partnership (SuNLaMP) PV O& M Best ???



This article first analyses the costs and benefits of integrated wind???PV-storage power stations. Considering the lifespan loss of energy storage, a two-stage model for the configuration and operation of an integrated power station system is established to maximize the daily average net profit of the station.



a Corresponding author: zhang.wyu@hotmail Construction of digital operation and maintenance system for new energy power generation enterprises Zhang Wenyu<sup>1</sup>, a, Liu Hongyong<sup>1</sup>, Xu Xiaochuan<sup>1</sup>, Li Ming<sup>1</sup>, Ren Weixi<sup>1</sup>, Ma Buyun<sup>2</sup>, Ren jie <sup>1</sup> and Song Zhenyu<sup>1</sup> <sup>1</sup>Department of Production and Technology, Wind and Solar Power Energy Storage ???



# ENERGY STORAGE POWER STATION OPERATION AND MAINTENANCE SYSTEM

---



To do this, performing an optimum operation and maintenance of photovoltaic plants is crucial. The operation maximizes the output of the plant, while the maintenance makes it more efficient, as low levels of production and failures can be easily identified. Therefore, this work focuses on the lines of research shown in Fig. 1.



The operation and maintenance of large-scale battery energy storage systems (BESS) connected to a substation is crucial for ensuring their optimal performance, longevity, and safety.