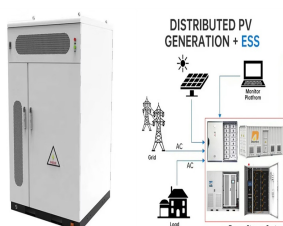


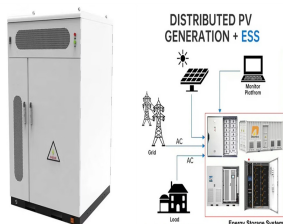
ENERGY EQUIPMENT CO INC SINGAPORE



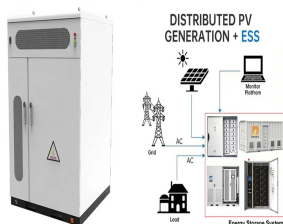
Who is Energy Equipment Services Pte Ltd? ENERGY EQUIPMENT SERVICES PTE. LTD. (the "Company") is a Private Company Limited by Shares, incorporated on 16 November 2005 (Wednesday) in Singapore . The address of the Company's registered office is 11 PANDAN ROAD ,SINGAPORE (609259). The Company current operating status is amalgamated.



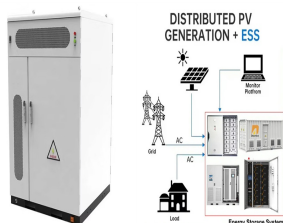
Who is energy equipment engineering? ENERGY EQUIPMENT ENGINEERING PTE. LTD. (the "Company") is a Private Company Limited by Shares, incorporated on 19 March 2014 (Wednesday) in Singapore . The address of the Company's registered office is at the PAYA LEBAR SQUARE building. The Company current operating status is live and has been operating for 9 years.



Who is TC Energy Equipment & Services? TC ENERGY EQUIPMENT AND SERVICES PTE. LTD. (the "Company") is a Private Company Limited by Shares, incorporated on 16 November 2018 (Friday) in Singapore . The address of the Company's registered office is 9 TRACTOR ROAD, SINGAPORE (627970). The Company current operating status is live and has been operating for 6 years.

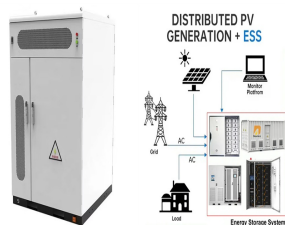


Who is energy equipment services? Your Global Partner for Integrated Rigging and Mooring Solutions ENERGY EQUIPMENT SERVICES One of the leading distributors of high quality marine and oilfield equipment in the Asia Pacific Region.



Why should you buy marine equipment from Singapore? One of the leading distributors of high quality marine and oilfield equipment in the Asia Pacific Region. Being based in Singapore which is strategically located and well connected in communication networks, allows fast shipments from Europe and the United States of America, the manufacturing homeland of many of our principals.

ENERGY EQUIPMENT CO INC SINGAPORE



Renewable energy companies in Singapore are working to increase the country's domestic energy supply and decrease its reliance on foreign energy sources. Sun Cable is an energy company developing large solar infrastructure projects. Its flagship project, called AAPowerLink, aims to collect renewable energy in Australia and transmit that



Your energy product & service specialist. In 2001, Energy Equipment, LLC was formed as a Manufacturers Representation firm providing products and services for Natural Gas Transportation, Storage and Distribution, Power Generation, ???



TC ENERGY EQUIPMENT AND SERVICES PTE. LTD. is a Singapore PRIVATE COMPANY LIMITED BY SHARES. The company was incorporated on 16 Nov 2018, which is 5.9 years ago. The address of the Business's registered office is 9 TRACTOR ROAD, Singapore 627970. The Business current operating status is Live Company. The Business's principal activity is ???



TC ENERGY EQUIPMENT AND SERVICES PTE. LTD. was incorporated on 16 November 2018 (Friday) as a Private Company Limited by Shares in Singapore. The Company current operating status is live with registered address at 9 TRACTOR ROAD. The Company principal activity is in MANUFACTURE AND REPAIR OF OTHER OILFIELD AND GASFIELD MACHINERY AND ???



Top 1-year algo backtest: +265.99% \$10,000 in October 2023 would now be \$36,599 by following this algorithm daily at market close.. Use AI to boost your investing & swing trading, now! Try Disfold DeepFinance FREE

ENERGY EQUIPMENT CO INC SINGAPORE



ENERGY EQUIPMENT SERVICES PTE. LTD. is a Singapore PRIVATE COMPANY LIMITED BY SHARES. The company was incorporated on 16 Nov 2005, which is 19.1 years ago. The address of the Business's registered office is 11 PANDAN ROAD, Singapore 609259. The Business current operating status is Amalgamated. The Business's principal ???



Find company research, competitor information, contact details & financial data for ENERGY EQUIPMENT SERVICES PTE. LTD. of Singapore. Get the latest business insights from Dun & Bradstreet.



Find company research, competitor information, contact details & financial data for SIN ENERGY & EQUIPMENT INVESTMENT PTE. LTD. of Singapore. Get the latest business insights from Dun & Bradstreet.



In July 2018, TC Energy Equipment and Services Pte Ltd was established. The company specialized in sales and services of Oil & Gas industry, API product and LNG gas and LNG equipment. ??? Singapore manufacturing federation ??? Singapore cranes association



Gur?<<n Energy is a renewable energy company headquartered in Singapore. We take effective action to move Asia to 100% renewable energy, with a mission to develop, own and operate enough solar, wind and storage solutions to power ???



XINXING ENERGY EQUIPMENT PTE. LTD. is a Singapore EXEMPT PRIVATE COMPANY LIMITED BY SHARES. The company was incorporated on 26 Sep 2019, which is 4.8 years ago. The address of the Business's registered office is 275 TAMPINES STREET 22, #03-98,

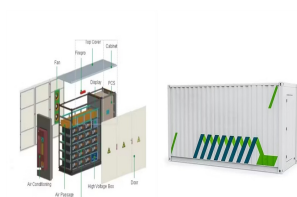
ENERGY EQUIPMENT CO INC SINGAPORE

Singapore 520275. The Business current operating status is Live Company. The Business's ???

ENERGY EQUIPMENT CO INC SINGAPORE



SRISEN ENERGY EQUIPMENT PTE. LTD. (the "Company") is a Exempt Private Company Limited by Shares, incorporated on 2 June 2020 (Tuesday) in Singapore . The address of the Company's registered office is at the PAYA LEBAR SQUARE building. The Company current operating status is live and has been operating for 1591066801. This Company's ???



Company Profile. Overview Our Story Leadership Pioneering Technologies Hitachi Energy 2030 Plan Country and Regional Information Locations Map. Our People and Culture. Overview Integrity Health, Hitachi Energy in Singapore has more than 100 employees, serving over 200 customers. We have developed a world-class front-end sales and service



ENERGY EQUIPMENT ENGINEERING PTE. LTD. is a Singapore PRIVATE COMPANY LIMITED BY SHARES. The company was incorporated on 19 Mar 2014, which is 10.8 years ago. The address of the Business's registered office is 60 PAYA LEBAR ROAD, #09-20, PAYA LEBAR SQUARE, Singapore 409051. The Business current operating status is Live ???



TC ENERGY EQUIPMENT AND SERVICES PTE. LTD. (UEN ID 201838916G) is a corporate entity registered with Accounting and Corporate Regulatory Authority. Mega@Woodlands, Singapore 737856: 2018-07-12: Live Company: JW EQUIPMENT & SERVICES PTE. LTD. 52 Chai Chee Street, #10-328, Singapore 460052: 2021-07-23: Struck ???

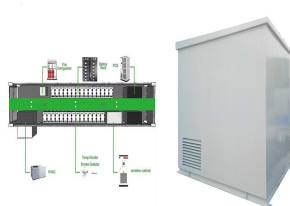


OES is a dynamic and international company based in Singapore to provide professional services one-stop solution to the energy industry. Singapore (HQ) Orient Energy Services Pte Ltd 10, Buroh Street, West Connect Building, #01-04, Singapore 62756 Specialized Material & Equipment Supply.

ENERGY EQUIPMENT CO INC SINGAPORE



ADVANCED ENERGY SOLUTIONS (AES) PTE. LTD. was incorporated as a Exempt Private Company Limited by Shares in Singapore. The Company current operating status is live with registered address at TONG ENG BUILDING. The Company principal activity is in MANUFACTURE AND REPAIR OF OTHER SPECIAL PURPOSE MACHINERY N.E.C. ???



Energy Equipment Services | 73 followers on LinkedIn. Key Supplier to Offshore Oil & Gas Industry | TBC Oil and Gas Singapore, Singapore 73 followers Key Supplier to Offshore Oil & Gas Industry. Follow View all 6 employees Company size 2-10 employees Headquarters



Company Profile. Headquartered in Singapore, Comcore focuses on the digital energy sector, with energy metering as the core, covering AMI and communications, smart metering equipment, storage energy system and intelligent solar grid. Committed to serving global energy enterprises, it is an energy data service provider in the field of digital

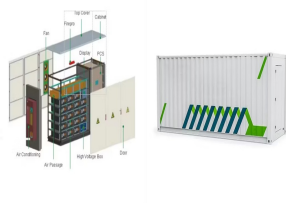


ENERGY ELECTRICAL ENGINEERING PTE. LTD. was incorporated on 21 July 2021 (Wednesday) as a Exempt Private Company Limited by Shares in Singapore. The Company current operating status is live with registered address at A"POSH BIZHUB. The Company principal activity is in INSTALLATION OF INDUSTRIAL MACHINERY AND EQUIPMENT, ???



Provide information about WRIGHT GLOBAL ENERGY EQUIPMENT PTE. LTD., includes incorporation date, status, type, directors, address, contacts information & more. It's Unique Entity Number (UEN) is 201823782D. WRIGHT GLOBAL ENERGY EQUIPMENT PTE. LTD. is a type of Local Company. The registered street name and Postal Code is WOODLANDS CLOSE

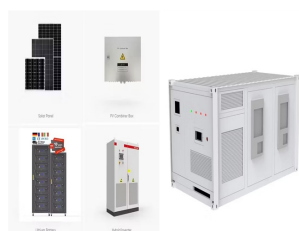
ENERGY EQUIPMENT CO INC SINGAPORE



Singapore Renewable Energy Company List Mordor Intelligence expert advisors identify the Top 5 Singapore Renewable Energy companies and the other top companies based on 2024 market position. Get access to the business profiles of top 8 Singapore Renewable Energy companies, providing in-depth details on their company overview, key products and services, financials, ???



WRIGHT GLOBAL ENERGY EQUIPMENT PTE. LTD. was incorporated on 12 July 2018 (Thursday) as a Exempt Private Company Limited by Shares in Singapore. The Company current operating status is live with registered address at MEGA@WOODLANDS. The Company principal activity is in WHOLESALE TRADE OF A VARIETY OF GOODS WITHOUT ???



Petro Equipment Asia PTE LTD (P.E.A) provides tubular solutions and services for the energy market. Petro Equipment Asia PTE LTD (P.E.A) supplies downhole pipes, line-pipe, completion equipment and reconditioned machinery. Singapore 068807: E-mail: sales@petroequipment .sg: Tel No: (+65) 81382145:



Companies Specialising in Waste-to-Renewable Energy. 7. EcoWise Holdings Limited. Established in 1979, EcoWise Group, headquartered in Singapore, is a prominent figure in environmental solutions, specialising in Resource Recovery, Renewable Energy, and Integrated Environmental Solutions. One of the most noteworthy projects is the Co-generation Biomass ???



General Manager at Energy Equipment Services Pte, Ltd. ? Experience: Energy Equipment Services Pte, Ltd. ? Location: Singapore ? 23 connections on LinkedIn. View Peter Ho's profile on LinkedIn, a professional community of 1 billion members.