

ENERGY SOURCE OF ENERGY STORAGE POWER STATION



What is energy storage for power systems? Energy Storage for Power Systems (3rd Edition) Unregulated distributed energy sources such as solar roofs and windmills and electric vehicle requirements for intermittent battery charging are variable sources either of electricity generation or demand. These sources impose additional intermittent load on conventional electric power systems.



Can energy storage power stations be adapted to new energy sources? Through the incorporation of various aforementioned perspectives, the proposed system can be appropriately adapted to new power systems for a myriad of new energy sources in the future. Table 2. Comparative analysis of energy storage power stations with different structural types. storage mechanism; ensures privacy protection.



What time does the energy storage power station operate? During the three time periods of 03:00-08:00, 15:00-17:00, and 21:00-24:00, the loads are supplied by the renewable energy, and the excess renewable energy is stored in the FESPS or/and transferred to the other buses. Table 1. Energy storage power station.



What is new-type energy storage? This year, new-type energy storage has emerged as a buzzword. Unlike traditional energy, new energy sources typically fluctuate with natural conditions. Advanced storage solutions can store excess power during peak generation and release it when needed, enabling greater reliance on renewables as a primary energy source.



Should energy storage power stations be scaled? In addition, by leveraging the scaling benefits of power stations, the investment cost per unit of energy storage can be reduced to a value lower than that of the user's investment for the distributed energy storage system, thereby reducing the total construction cost of energy storage power stations and shortening the investment payback period.

ENERGY SOURCE OF ENERGY STORAGE POWER STATION



What is secondary energy storage in a power system? Secondary energy storage in a power system is any installation or method, usually subject to independent control, with the help of which it is possible to store energy, generated in the power system, keep it stored and use it in the power system when necessary.



Firstly, this paper proposes the concept of a flexible energy storage power station (FESPS) on the basis of an energy-sharing concept, which offers the dual functions of power ???



Imagine harnessing the full potential of renewable energy, no matter the weather or time of day. Battery Energy Storage Systems (BESS) make that possible by storing excess energy from solar and wind for later use. As ???



WUHAN, Jan. 9 (Xinhua) -- A compressed air energy storage (CAES) power station utilizing two underground salt caverns in Yingcheng City, central China's Hubei Province, was successfully ???



Coordinated control strategy of multiple energy storage power stations supporting black-start based on dynamic allocation. Author links open overlay panel Cuiping Li a wind ???

ENERGY SOURCE OF ENERGY STORAGE POWER STATION



1. Black Start: The Key to Power System Recovery After a Blackout. A black start is a crucial procedure used to restore power to a grid after a complete or partial blackout is a carefully coordinated process designed to ???



In this paper, considering the important function of pumped-storage power station (PPS) in promoting the "source-grid-load-storage" synergy and complement in the construction ???



Due to the dual characteristics of source and load, the energy storage is often used as a flexible and controllable resource, which is widely used in power system frequency ???

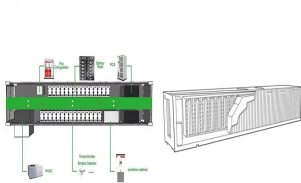


Nuclear power stations are highly controversial, are not able to be built under existing law in any Australian state and territory, are a more expensive source of power than renewables, and present significant challenges in terms of the ???



1 Beijing Key Laboratory of Research and System Evaluation of Power, China Electric Power Research Institute, Power Automation Department, Beijing, China; 2 PKU-Changsha Institute for Computing and Digital Economy, ???

ENERGY SOURCE OF ENERGY STORAGE POWER STATION



It is also an introduction to the multidisciplinary problem of distributed energy storage integration in an electric power system comprising renewable energy sources and electric car battery swap and charging stations. The 3rd edition ???



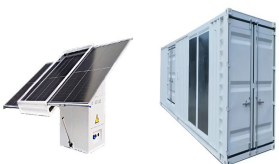
This photo shows a view of the surface structure of salt cavern air storage inside the 300 MW compressed air energy storage station in Yingcheng City, central China's Hubei Province, Jan. 9, 2025. The single unit power, ???



The operating principle of a battery energy storage system (BESS) is straightforward. Batteries receive electricity from the power grid, straight from the power station, or from a renewable energy source like solar panels or other ???



Large-scale integration of renewable energy in China has had a major impact on the balance of supply and demand in the power system. It is crucial to integrate energy storage devices within wind power and photovoltaic ???



A battery energy storage system (BESS) saves energy in rechargeable batteries for later use. It helps manage energy better and more reliably. These systems are important for today's energy needs. They make it ???