

ENERGY STORAGE AUTOMATIC CHARGING VEHICLE



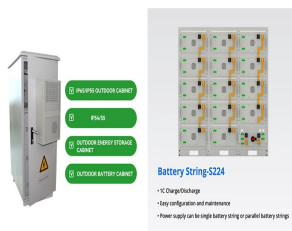
A mobile charging station is a new type of electric vehicle charging equipment, TMCSs with and without energy storage systems are called battery-integrated TMCS and battery-less TMCS, respectively. The literature on MCSs introduce four structures for TMCS as shown in Fig. 2 and detailed below: 1.



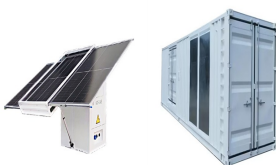
Vehicle to Grid Charging. Through V2G, bidirectional charging could be used for demand cost reduction and/or participation in utility demand response programs as part of a grid-efficient interactive building (GEB) strategy. The V2G model employs the bidirectional EV battery, when it is not in use for its primary mission, to participate in demand management as a demand-side ???



However, energy storage systems provide hurdles for EV systems in terms of their safety, size, cost, and general management issues. Furthermore, focusing solely on EVs is insufficient because electrical vehicle charging stations (EVCS) are also required for the deployment of these vehicles.



Explore the evolution of electric vehicle (EV) charging infrastructure, the vital role of battery energy storage systems in enhancing efficiency and grid reliability. Learn about the synergies ???

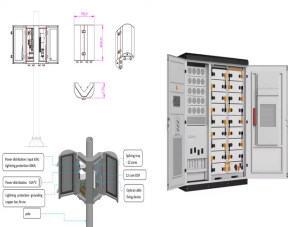


Electric vehicles (EVs) play a major role in the energy system because they are clean and environmentally friendly and can use excess electricity from renewable sources. In order to meet the growing charging demand for EVs and overcome its negative impact on the power grid, new EV charging stations integrating photovoltaic (PV) and energy storage ???

ENERGY STORAGE AUTOMATIC CHARGING VEHICLE



A cooperative energy management in a virtual energy hub of an electric transportation system powered by PV generation and energy storage.
IEEE Trans. Transp. Electrification. 7, 1123-1133. <https://doi.org/10.1109/TPES.2018.2822222>



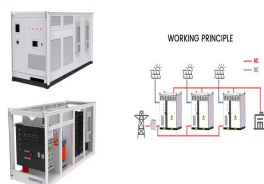
Made to do much more than power up your compatible GM EV, GM Energy's bidirectional charging is a new way to look at energy overall. Integrated, inspired design lets power flow easily between the vehicle and your properly equipped home???creating a smart new source of energy you can rely on.



1 INTRODUCTION. As renewable energy sources (RESs) has an inherent intermittent characteristics, growing concerns over a weak system with a high penetration level have received scholars' attention, which result in research toward RES impact and stability alleviation, as several research reports have shown that RES threatens [1-4].Electric vehicles ???



Request PDF | On Oct 9, 2015, Chellaswamy Chellaiah published An Automatic Charging Mechanism and Electrical Energy Storage for Full Electric Vehicle | Find, read and cite all the research you



In recent years, new energy vehicles in Beijing have developed rapidly. This creates a huge demand for charging. It is a difficult problem to accurately identify the charging behavior of new energy vehicles and evaluate the use effect of social charging piles (CART piles) in Beijing. In response, this paper established the charging characteristics analysis model of ???

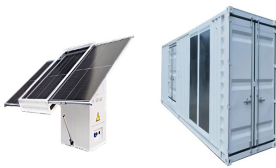
ENERGY STORAGE AUTOMATIC CHARGING VEHICLE



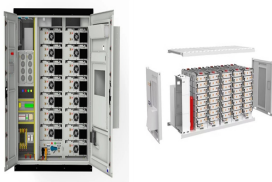
There are different types of energy storage systems available for long-term energy storage, lithium-ion battery is one of the most powerful and being a popular choice of storage. This review paper discusses various aspects of lithium-ion batteries based on a review of 420 published research papers at the initial stage through 101 published



This study addresses the challenges associated with electric vehicle (EV) charging in office environments. These challenges include (1) reliance on manual cable connections, (2) constrained



Many different types of electric vehicle (EV) charging technologies are described in literature and implemented in practical applications. This paper presents an overview of the existing and proposed EV charging technologies in terms of converter topologies, power levels, power flow directions and charging control strategies. An overview of the main charging ???



This paper describes the hybrid renewable sources, for instance, the wind generator and the photovoltaic modules utilized to produce power to recharge the electric vehicles (EVs) storage system



Currently, some experts and scholars have begun to study the siting issues of photovoltaic charging stations (PVCSSs) or PV-ES-I CSs in built environments, as shown in Table 1. For instance, Ahmed et al. (2022) proposed a planning model to determine the optimal size and location of PVCSSs. This model comprehensively considers renewable energy, full power ???

ENERGY STORAGE AUTOMATIC CHARGING VEHICLE



Optimal scheduling of solar charging ??? ??? Energy storage system (ESS) Optimal scheduling: Optimally schedule the EV charging at solar energy-powered CS for lower pricing, lesser computational time and better accommodation of EV charging [60] Solar and diesel generator for EV CS: With: Less than 5%: Storage battery



It is based on electric power, so the main components of electric vehicle are motors, power electronic driver, energy storage system, charging system, and DC-DC converter. Fig. 1 shows (ESS) is essential for EVs. EVs need a lot of various features to drive a vehicle such as high energy density, power density, good life cycle, and many



iTrailer With 200 kWh of storage and 180 kW charging power, iTrailer is versatile for stationary, towed, or in-vehicle use. It serves as a charger for electric vehicles, an emergency power source, and a backup power supply. Its industrial power outlets offer reliable electricity for various applications. "> 200kWh180kW | Supporting CCS1/CCS2 | DC Input 200A | AC ???



Battery energy storage systems (BESS) are a way of providing support to existing charging infrastructures. During peak hours, when electricity demand is high, BESS can provide additional power to charging stations. This ensures stable charging without overloading the grid, preventing disruptions, and optimizing the overall charging experience.



frequency response of power system. Compared with the dispersive electric vehicle energy storage, electric vehicle battery swapping station (BSS), as an emerging form of storage, can provide a more reliable supplementary regulation service for frequency control. This study has proposed a new supplementary automatic generation control (AGC)

ENERGY STORAGE AUTOMATIC CHARGING VEHICLE



Distributed energy storage control is classified into automatic voltage regulator and load frequency control according to corresponding functionalities. three basic electric vehicle charging



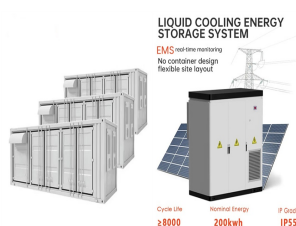
Electric vehicles (EVs) will gain more and more market share, eventually taking over internal combustion engine vehicles. Direct current (dc) fast charging stations will replace, or integrate, ???



This paper presents an automated charging mechanism (ACM) automatically recharges the battery packs, therefore, no need to wait for recharging EVs thereby increases the traveling distance.



Energy storage for businesses Close My profile Eventually, this could become so automatic that you forget you're even charging your car in the first place. Because of this, you're more likely to partially charge your car in small doses, keeping your battery within the 20 to 80 percent charging range where it's most happy.

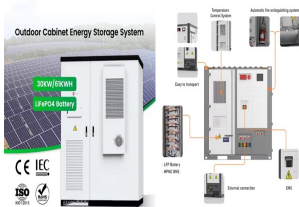


An automatic charging control can mitigate communication, and estimate the next trip with automatic charging control. And the third advantage uses energy storage and Vehicle to Grid operations



Web: <https://www.twojaelektryka.com.pl>

ENERGY STORAGE AUTOMATIC CHARGING VEHICLE



The battery discharges lesser in time compared to the charging time of the battery since automatic charging occurs as the vehicle moves. Download: Download high-res image (250KB) the PV modules generate electricity even when the vehicle does not move. The energy storage system will charge the battery in both cases as when the vehicle moves