

# ENERGY STORAGE BATTERY POWER DISPLAY



What is a battery energy storage system? Battery energy storage systems (BESS) Electrochemical methods, primarily using batteries and capacitors, can store electrical energy. Batteries are considered to be well-established energy storage technologies that include notable characteristics such as high energy densities and elevated voltages .



What are energy storage systems? Energy storage systems are designed to capture and store energy for later utilization efficiently. The growing energy crisis has increased the emphasis on energy storage research in various sectors. The performance and efficiency of Electric vehicles (EVs) have made them popular in recent decades.



How should energy storage devices be monitored and operated? To ensure the effective monitoring and operation of energy storage devices in a manner that promotes safety and well-being, it is necessary to employ a range of techniques and control operations . These measures should be designed to operate autonomously and without delay. Fig. 2.

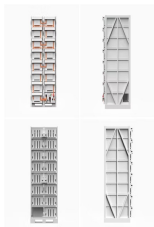


What are the monitoring parameters of a battery management system? One way to figure out the battery management system's monitoring parameters like state of charge (SoC), state of health (SoH), remaining useful life (RUL), state of function (SoF), state of performance (SoP), state of energy (SoE), state of safety (SoS), and state of temperature (SoT) as shown in Fig. 11 . Fig. 11.

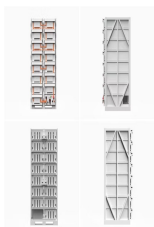


What are the different types of electrochemical energy storage systems? This article provides an overview of the many electrochemical energy storage systems now in use, such as lithium-ion batteries, lead acid batteries, nickel-cadmium batteries, sodium-sulfur batteries, and zebra batteries. According to Baker , there are several different types of electrochemical energy storage devices.

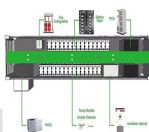
# ENERGY STORAGE BATTERY POWER DISPLAY



How does energy storage control work in an electric vehicle? The energy storage control system of an electric vehicle has to be able to handle high peak power during acceleration and deceleration if it is to effectively manage power and energy flow. There are typically two main approaches used for regulating power and energy management (PEM) .



Lead-Acid Battery to Lithium Battery. An energy storage system with higher energy density is needed in the 5G era. Intelligent lithium batteries that combine cloud, IoT, power electronics, and sensing technologies will ???



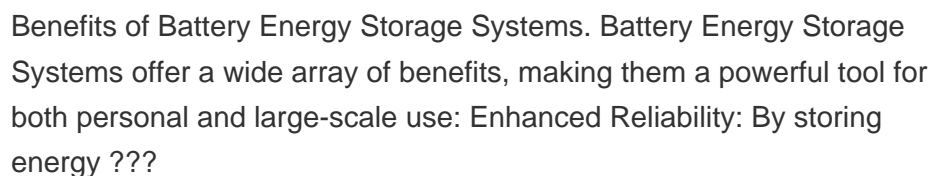
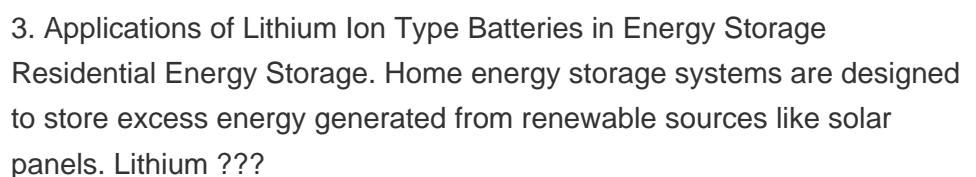
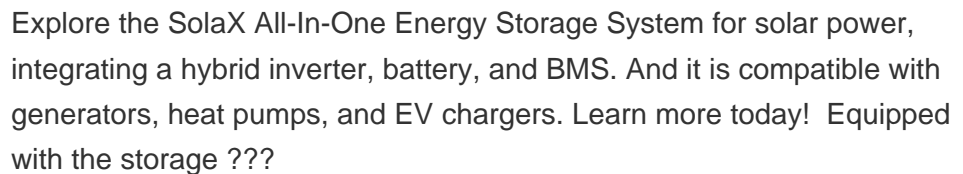
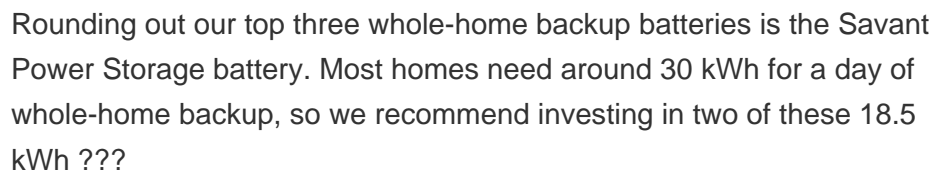
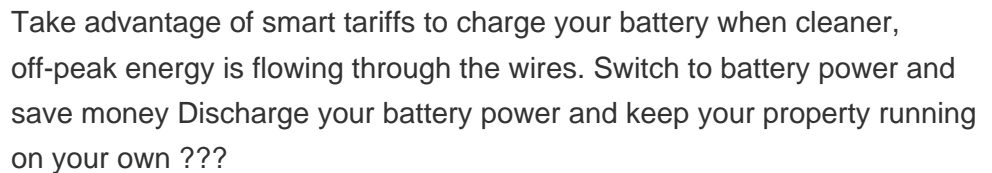
Mission-critical facilities such as hospitals and data centers need a constant source of 100 percent reliable energy to run and power their equipment. Battery energy storage systems (BESS) ensure power redundancy and ???



In the last year, nearly two-thirds of solar customers paired their solar panels with a home battery energy storage system (aka BESS). Why? Because home battery storage has something to offer everyone???from backup ???



Battery energy storage systems store surplus energy during periods of high energy production and then release it during peak demand to meet residential, C& I, and utility-scale needs, while also provide auxillary services for grid peak ???



# ENERGY STORAGE BATTERY POWER DISPLAY



The Power Storage 20 features a modular design, so the actual "battery" part of the Power Storage 20 is actually a bunch of smaller batteries installed together inside an enclosure. There are



Stop paying for peak energy charges. With a home battery storage system, you can store up free energy from renewables, or use the grid to charge your battery overnight when energy costs are low. You can then switch to battery power ???



Battery Energy Storage Systems, or BESS, are rechargeable batteries that can store energy from different sources and discharge it when needed. BESS consist of one or more batteries and can be used to balance ???