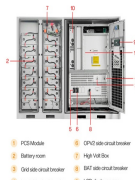
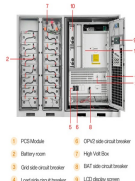


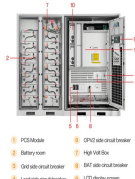
- 1 PCE Module
- 2 Battery room
- 3 Grid side circuit breaker
- 4 Inverter side circuit breaker
- 5 CPN2 side circuit breaker
- 6 High Volt Box
- 7 EAT side circuit breaker
- 8 ICD control room



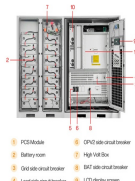
- 1 PCS Module
- 2 Battery room
- 3 GND side-circuit breaker
- 4 CPN2 side-circuit breaker
- 5 High Volt Box
- 6 EBF side-circuit breaker
- 7
- 8



1. PCS Module
2. Battery room
3. Grid side-circuit breaker
4. Load side-circuit breaker
5. CPV2 side-circuit breaker
6. High Volt Box
7. BMT side-circuit breaker
8. LCD display screen

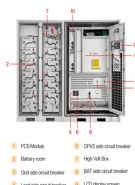


- 2 Grid-side circuit breaker
- 3 EAT side-circuit breaker
- 4 A rectifier side-circuit breaker
- 5 LCD display screen



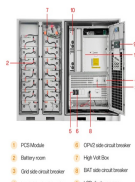
- 1 PCS Module
- 2 Battery room
- 3 Grid-side circuit breaker
- 4 AC side circuit breaker
- 5 OPN2 side circuit breaker
- 6 High Volt Box
- 7 EAT side circuit breaker
- 8 LCD display screen

ENERGY STORAGE BCAN BUS COMMUNICATION



- 1 PCS Module
- 2 Battery room
- 3 Grid side circuit breaker
- 4 Load side circuit breaker
- 5 CAN bus circuit breaker
- 6 CAN bus circuit breaker
- 7 High V&L Box
- 8 B&T side circuit breaker
- 9 LCD display screen
- 10 MPPT

How do I know if a battery is a CAN-bus BMS? The data of CAN-IDs 0x370 and 0x371 if present. The data of CAN-ID 0x35E if present and recognised. The data may be used literally, but may also be replaced by a more readable name. If the GX Device identifies the battery by some other means, a hard coded name will be used. If all else fails, the name will be CAN-bus BMS battery.



- 1 PCS Module
- 2 Battery room
- 3 Grid side circuit breaker
- 4 Load side circuit breaker
- 5 CAN bus circuit breaker
- 6 CAN bus circuit breaker
- 7 High V&L Box
- 8 B&T side circuit breaker
- 9 LCD display screen
- 10 MPPT

The automotive CAN bus, short for Controller Area Network, is a communication protocol that has become the backbone of vehicle communication systems. Originally developed by Robert Bosch GmbH in the 1980s, this standard has ???



The GoldenMate Orion1000 LiFePO4 battery is a versatile energy storage solution equipped with advanced communication interfaces, facilitating integration with various energy management ???



TX and RX: The TX and RX signal lines are required to interface with an external CAN transceiver. Both signal lines represent/interpret a dominant bit as a low logic level (0V), and a recessive bit as a high logic level (3.3V). ???



It introduces V2V communication and its ability to allow vehicles to communicate in real time to share information. This can enable applications like accident prevention, file sharing, emergency alerts, speed monitoring, and anti ???

ENERGY STORAGE BCAN BUS COMMUNICATION



The central gateway is the central communication node within commercial vehicles. It connects the inner vehicle architecture with the outer world. Thus, the central gateway ensures that only previously configured ???



Share this article: Share via Email. Communication Ports for Battery Connection . As the demand for clean and reliable energy solutions continues to grow, the compatibility of Solis inverters with batteries from ???



CAN bus is a serial communication protocol that allows devices to exchange data reliably and efficiently. Discover CAN bus challenges and how to solve them with eKuiper and MQTT. Energy & Utilities. Oil & Gas. Telecom. ???



In a CAN bus system, communication between devices is managed through a message-oriented protocol. Each device, or node, can send and receive messages. These messages contain an identifier that indicates ???

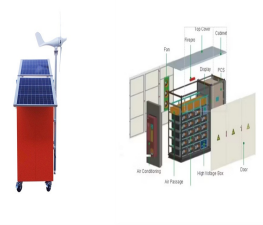


The CAN Bus Communications Decoded course is the ultimate resource for learning the CAN protocol, allowing you to do everything from setting up a dash display, to reverse engineering parameters from an OEM datastream for your ???

ENERGY STORAGE BCAN BUS COMMUNICATION



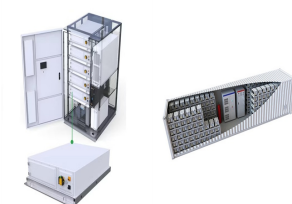
CAN ,,??? 10Km ,CAN 50Kbit/s ??? CAN ???



CAN-BUS ? 1/4 ?? 1/4 ? TTCM(Time triggered communication mode) ,
CAN ,,CAN ???



? 1/4 ?1? 1/4 ?? 1/4 ?Bus Idle? 1/4 ? ???,???,,,, ??? ???



CAN,CAN???CAN???CAN???CANCAN???CAN, ???



Multiple Electrical Issues ???? 2007 Honda Odyssey Customer said that multiple electrical systems stopped working all at once: Turn signals, wipers, sliding doors, door locks, remote control, etc. No history of any damage, or ???