

ENERGY STORAGE BOX SHELL CONTACT INFORMATION



How do I contact Shell Energy UK Limited? There are many ways to contact us: Write to us at Shell Energy UK Limited, Elder House, 586-592 Elder Gate, Milton Keynes, MK9 1LR. We are available from 8am to 5pm, Monday to Friday. (C) 2020 - 2024 Shell Energy UK Limited The Registered Office of Shell Energy UK Limited is Shell Centre, London, United Kingdom, SE1 7NA.



How do I contact Shell UK? If you are a Shell UK Customer and have any enquiries, please contact one of the Shell representatives below. If you are a Shell Customer from another country, please visit Shell Global to contact your country's support team. Have a question? Why not have a look at our Help and Support FAQ section or chat with our agents.



What time does Shell Energy lubricants open? *Our lines are open from 8.00AM to 6.30PM, Monday to Friday and 9AM to 4PM on Saturdays. For all queries related to Shell Energy please contact our Shell Energy Retail Team through the Support section below. Shell Industrial Lubricants provides lubrication products to the UK manufacturing sector.



How can Shell Energy help you? Contact Shell Energy's team to find out how we can help you today. We are active across all stages of the energy value chain from production, transport and storage to trading, sales and customer service.



What benefits does shell offer a business customer? Our business customers will benefit from: Exclusive access to Shell's global energy expertise including cleaner, cost effective energy via Shell's Distributed Energy team, and carbon offsetting solutions through the Carbon Footprint Hub, powered by Shell. Find out about our renewable energy here.

ENERGY STORAGE BOX SHELL CONTACT INFORMATION



Who is shell energy? Whether you are an energy producer, asset owner, trader, wholesaler or a large industrial customer, Shell Energy can offer flexible and bespoke products to meet your needs. Shell Energy provides gas and renewable electricity to customers in the United States. We want people to feel good about how they use energy.



Battery Energy Storage Systems (BESS) Certificates and Funding. Environmental Certificates; Help to make managing your day-to-day energy needs easier. How do I contact my account manager? For Shell Energy Australia account help, billing enquiries and customer support, get in touch today.



Shell Offshore Carbon Storage Solutions NL (SOCS NL) will offer CO₂ storage capacity and transportation solutions in the Dutch sector of the North Sea using Aramis infrastructure. Shell aims to develop several stores and offer capacity ???

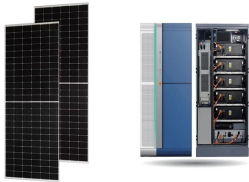


Batteries big and small: Battery Energy Storage Systems (BESS) come in different shapes and sizes, from grid-scale to behind-the-meter. Shell Energy's battery experts can design and install a BESS on your site and help you structure your energy assets to optimise the value from your battery.



Shell Energy makes it easy to pay your bills, understand your energy and billing data, and get the support you need, when you need it. Battery Energy Storage Systems (BESS) Certificates and Funding. Environmental Certificates; If you don't find your answers below, get in touch with us and one of our energy experts will contact you to

ENERGY STORAGE BOX SHELL CONTACT INFORMATION



Modules that are in use for the current academic year are linked for further information. Where no link is present, further information is not yet available. Students undertake modules to the value of 180 credits. Upon successful completion of 180 credits, you will be awarded an MSc in Advanced Materials Science (Energy Storage).



BW ESS, an energy storage owner-operator, along with Penso Power, has entered into a seven-year tolling agreement with Shell Energy Europe Limited for the Bramley battery energy storage system, which is under ???



Guo et al. studied different types of containers, namely, shell-and-tube, encapsulated, direct contact and detachable and sorptive type, for mobile thermal energy storage applications. In shell-and-tube type container, heat transfer fluid passes through tube side, whereas shell side contains the PCM.



Contact Shell Energy. There are a number of different ways to contact Shell Energy Broadband. Their Customer Care telephone number is 0330 0945801 between 8am and 8pm Monday to Friday and between 9am and 4pm on Saturday.. You can email Shell Energy Broadband at [broadbandpport@shellenergy .uk](mailto:broadbandpport@shellenergy.uk).. You can write to them at the following ???



Contact Us. Regardless of your energy needs or where you're located in the USA, Shell Energy representatives are happy to help, so reach out to the team today. A USA Shell Energy representative will be in touch. Email: AtYourService@shellenergy . 833-SHELL-BU (833-743-5528) Customer Service Hours: 7AM ??? 7PM CST M- F. Media Inquiries

ENERGY STORAGE BOX SHELL CONTACT INFORMATION



Information about Broadband: Shell Energy Broadband and Phone customers have moved to TalkTalk. There are many ways to contact us: Complete our online form. Email us at SEUKL-contactus@shell . Call us on 0330 088 2679. Write to us at Shell Energy UK Limited, Elder House, 586-592 Elder Gate, Milton Keynes, MK9 1LR.



Energy storage plays a key and growing role in ensuring the resilience of our electricity networks. Batteries provide a scalable solution that is unique in its ability to respond rapidly and proportionately to imbalances in electricity supply and demand. Following a 30-year career at Shell, John served as an Executive Director on the boards



Pre-construction activities have commenced for the Rangebank Battery Energy Storage System (BESS) in Cranbourne, Victoria marked by an official sod turning ceremony attended by the Hon. Lily D'Ambrosio MP, Victoria's Minister for Energy & Resources.. Situated within the Rangebank Business Park in Melbourne's southeast, the Rangebank BESS will ???



When managed optimally, the benefits of BESS and solar, as offered by Shell Energy, include: Lowering energy consumption and spend by utilising stored excess solar to avoid drawing energy from the grid during peak periods; Unlocking the opportunity to create additional revenue through participation in Demand Response programs



Last week Shell Energy announced its first grid-scale battery project in Victoria and fourth in Australia. Located in the suburb of Cranbourne West, the Rangebank Battery Energy Storage System (BESS) will provide 200MW/400MWh of battery storage capacity including grid ???

ENERGY STORAGE BOX SHELL CONTACT INFORMATION



RFC Power's system combines battery performance (high single cell voltage, high power density, high round trip efficiency and extremely long cycle-life) with very low capital costs as the electrolyte is based on inexpensive, non-toxic, abundant materials, delivering the cost-effective long duration energy storage required to support the transition to a low carbon ???



If you would like any further information please contact the Shell Customer Service Centre via the "Online Request Form" or via the red "Chat" button at the bottom of the screen. Alternatively ???



Shell Energy in Europe offers end-to-end solutions to optimise battery energy storage systems for customers, from initial scoping to final investment decisions and delivery. Once energised, Shell Energy optimises battery systems to ???



Energy storage owner-operator BW ESS and its partner, Penso Power, have signed a seven-year tolling agreement with Shell Energy Europe Limited (Shell) for their Bramley Battery Energy Storage System (BESS) currently under construction in Hampshire, UK.



For all queries related to Shell Energy please contact our Shell Energy Retail Team through the Support section below. Visit our Shell Energy help section of chat with us. Shell GO+ Customer Services. Get phone number. Shell Fuel Card Customer Services. Shell ???

ENERGY STORAGE BOX SHELL CONTACT INFORMATION



In a landmark move, energy titan Shell has inked a seven-year agreement to trade power from the Bramley project, a 330MWh battery energy storage system (BESS) under development by BW ESS and Penso Power in Hampshire. Once operational, this project will become the UK's longest-duration BESS. This fixed-price tolling agreement guarantees ???



Richard Thwaites, CEO at Penso Power, says this latest agreement represents a shift in how energy storage projects are structured and financed. "The floor contract we agreed with Shell on our Minety battery storage project back in 2020 became a template for the industry and this tolling agreement for Bramley breaks new ground.



Shell New Energies US LLC, a subsidiary of Royal Dutch Shell plc (Shell), has signed an agreement to buy 100% of Savion LLC (Savion), a large utility-scale solar and energy storage developer in the United States, from Macquarie's Green Investment Group. With this acquisition, Shell expects to significantly expand its global solar portfolio.



Shell Energy Solutions TX PUCT #10174, MP2 Energy NE LLC d/b/a Shell Energy Solutions Retail Services CT PURA No. 19-02-38 / DC PSC No. 18853 / DE PSC No. 9179 / IL ICC No. 17-0918 / MA DPU CS-179 / MD PSC IR-3995 / ME PSC No. 2018-00309 / NH PUC No. DM 19-072 / NJ BPU No. ESL-0145 / NY ESCO MP2E / OH 13-763E / PA PUC A-2012-2322668 / RI ???



15-year offtake agreement to support \$400m Koorangie Energy Storage System. 30 October 2023. Shell Energy is pleased to support the Koorangie Energy Storage System (KESS) in Victoria with a 15-year offtake agreement for the full 185MW / 370MWh. Read more

ENERGY STORAGE BOX SHELL CONTACT INFORMATION



15-year offtake agreement to support \$400m Koorangie Energy Storage System. 30 October 2023. Shell Energy is pleased to support the Koorangie Energy Storage System (KESS) in Victoria with a 15-year offtake agreement for the full 185MW / ???



Europe's largest battery storage project, the 100-megawatt system in Minety in Wiltshire, South West England, is now fully operational. Controlled and optimised by Shell-owned Limejump, the battery will help balance the UK's electricity demand, providing electricity for up to 10,000 homes for a day before being recharged.