

# ENERGY STORAGE CAPACITY SYSTEM DESIGN



These systems and technologies are commonly used to meet society's energy needs, particularly in light of the environmental challenges society faces (Ravestein et al. [1] The term "intermittency

Commercial and Industrial ESS

- Budget-Friendly Solution
- Renewable Energy Integration
- Reduced Energy Storage Expenses



A comparison between each form of energy storage systems based on capacity, lifetime, capital cost, strength, weakness, and use in renewable energy systems is presented in a tabular form. Design system composed of HESS to control wind power fluctuations by using fuzzy logic control. [59] Minimize cost Minimize fuel Minimize system efficiency:



Firm Capacity, Capacity Credit, and Capacity Value are important concepts for understanding the potential contribution of utility-scale energy storage for meeting peak demand. Firm Capacity (kW, MW): The amount of installed capacity that can be relied upon to meet demand during peak ???



Battery Energy Storage Systems abbreviated as BESS are electricity storage systems that primarily enable renewable energy and electricity supply robustness. reliability is just as important as capacity retention, and; The interesting aspects of this design is the integrated inverter, active balancing and the ability to switch the load

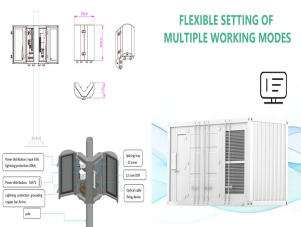


An ESS is a system composed of energy storage elements, input/output power converters, and a system controller. Fig. 1 shows a conceptual structure of an ESS. In order to provide a desired amount of energy and power capacity, multiple energy storage elements are aggregated to build a larger storage.

# ENERGY STORAGE CAPACITY SYSTEM DESIGN



power capacity before depleting its energy capacity. For example, a battery with 1 MW of power capacity and 4 MWh of usable energy capacity will have a storage duration of four hours. ??? Cycle life/lifetime. is the amount of time or cycles a battery storage system can provide regular charging and discharging before failure or significant



TES systems are divided into two categories: low temperature energy storage (LTES) system and high temperature energy storage (HTES) system, based on the operating temperature of the energy storage material in relation to the ambient temperature [17, 23]. LTES is made up of two components: aquiferous low-temperature TES (ALTES) and cryogenic



3 ? Sizing a Battery Energy Storage System (BESS) correctly is essential for maximizing energy efficiency, ensuring reliable backup power, and achieving cost savings. Whether for a commercial, industrial, or residential setting, ???



In battery research, the demand for public datasets to ensure transparent analyses of battery health is growing. Jan Figgenger et al. meet this need with an 8-year study of 21 lithium-ion systems



It enables the effective and secure integration of a greater renewable power capacity into the grid. BESSs are modular, housed within standard shipping containers, allowing for versatile deployment. When planning the implementation of a Battery Energy Storage System, policy makers face a range of design challenges.

# ENERGY STORAGE CAPACITY SYSTEM DESIGN



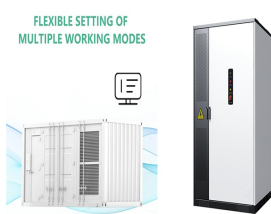
Rallo et al. [13] have modelled the battery ageing in a 2nd life battery energy storage system in the energy arbitrage market in Spain. The modelled BESS of 200 kWh and 40 kW had one charging and discharging cycle per day for four hours each.



An overview of system components for a flywheel energy storage system. Fig. 2. A typical flywheel energy storage system [11], which includes a flywheel/rotor, an electric machine, bearings, and power electronics. Fig. 3. The Beacon Power Flywheel [12], which includes a composite rotor and an electric machine, is designed for frequency



Battery energy storage systems (BESSs) are one of the main countermeasures to promote the accommodation and utilization of large-scale grid-connected renewable energy sources. With the rapid increase in the installed capacity of BESSs, the security problem and economic problem of BESSs are gradually exposed. On the one hand, fire accidents happen on occasion; on the ???



Battery energy storage systems are placed in increasingly demanding market conditions, providing a wide range of applications. When adding cells to a battery pack configuration, the energy capacity increases. Therefore, adding parallel cells to a super cell increases the pack's energy capacity, as does connecting an additional super cell



Energy storage systems (ESS) are highly attractive in enhancing the energy efficiency besides the integration of several renewable energy sources into electricity systems. While choosing an energy storage device, the most significant parameters under consideration are specific energy, power, lifetime, dependability and protection [1]. On the

# ENERGY STORAGE CAPACITY SYSTEM DESIGN



2. Core Design Principles Capacity Requirements: The first step in designing a battery energy storage system is determining the required capacity. This depends on factors such as the load profile, energy usage patterns, and peak demand. Accurate capacity estimation ensures that the system can handle the energy needs without excessive costs.



3.7se of Energy Storage Systems for Peak Shaving U 32 3.8se of Energy Storage Systems for Load Leveling U 33 3.9ogrid on Jeju Island, Republic of Korea Micr 34 4.1rice Outlook for Various Energy Storage Systems and Technologies P 35 4.2 Magnified Photos of Fires in Cells, Cell Strings, Modules, and Energy Storage Systems 40



This article is the second in a two-part series on BESS ??? Battery energy Storage Systems. Part 1 dealt with the historical origins of battery energy storage in industry use, the technology and system principles behind modern BESS, the applications and use cases for such systems in industry, and presented some important factors to consider at the FEED stage of ???



3 ? Sizing a Battery Energy Storage System (BESS) correctly is essential for maximizing energy efficiency, ensuring reliable backup power, and achieving cost savings. Whether for a commercial, industrial, or residential setting, properly sizing a BESS allows users to store and utilize energy in a way that meets their specific needs.

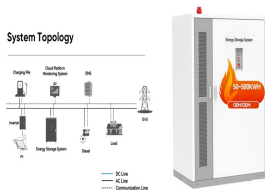


The United States has one operating compressed-air energy storage (CAES) system: the PowerSouth Energy Cooperative facility in Alabama, which has 100 MW power capacity and 100 MWh of energy capacity. The system's total gross generation was 23,234 MWh in 2021. The facility uses grid power to compress air in a salt cavern. When needed, the

# ENERGY STORAGE CAPACITY SYSTEM DESIGN



Potential Energy Storage Energy can be stored as potential energy Consider a mass,  $m$ , elevated to a height,  $h$ . Its potential energy increase is  $\Delta E_p = mgh$ , where  $g = 9.81 \text{ m/s}^2$  is gravitational acceleration. Lifting the mass requires an input of work equal to (at least) the energy increase of the mass



storage, amounted to a mere 1.6 GW in power capacity and 1.75 GWh in energy storage capacity. These data underscore the significant role pumped hydro storage systems play in the United States in terms of power capacity and energy storage capacity [7]. However, these systems also come with their own set of challenges that must be taken



The energy storage capacity of an electrostatic system is proportional to the size and spacing of the conducting plates [[133], [134], [135]]. However, due to their relatively low energy intensity, these systems have very limited conventional support in the short term. In terms of system design considerations, sodium nickel chloride

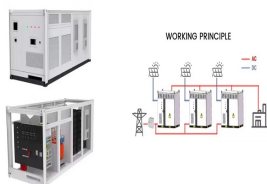


PV System Design with Storage. energy to fully charge battery capacity Discharge at high evening peak discharge opportunity Forecasted Solar Solar Forecast Optimized charging. 1.Battery Energy Storage System (BESS) -The Equipment 2.Applications of Energy Storage



Battery Energy Storage System Design is pivotal in the shift towards renewable energy, ensuring efficient storage of surplus energy for high-demand periods. This article delves into the essential

# ENERGY STORAGE CAPACITY SYSTEM DESIGN



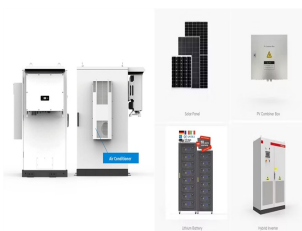
An algorithm is developed to deploy the design principles of energy storage systems that meet various grid applications. This process takes into account the service that the energy storage would provide. For example, ancillary services require bulk capacity in order to keep power system quality, reliability and security (Eyer and Corey 2010)



Wind and solar energy must be complemented by a combination of energy storage and firm generating capacity. Here, Sepulveda et al. assess the economic value and system impact of a wide range of



22 categories based on the types of energy stored. Other energy storage technologies such as 23 compressed air, fly wheel, and pump storage do exist, but this white paper focuses on battery 24 energy storage systems (BESS) and its related applications. There is a body of 25 work being created by many organizations, especially within IEEE, but it is



Battery energy storage systems (BESSs) are one of the main countermeasures to promote the accommodation and utilization of large-scale grid-connected renewable energy sources. With ???



According to the latest update, global investment in the development and utilization of renewable sources of power was 244 b US\$ in 2012 compared to 279 b US\$ in 2011, Weblink1 [3]. Fig. 1 shows the trend of installed capacities of renewable energy for global and top six countries. At the end of 2012, the global installed renewable power capacity reached 480 ???