

ENERGY STORAGE DEVICE BE54 WHAT DOES IT MEAN



Energy storage systems play a crucial role in the overall performance of hybrid electric vehicles. Therefore, the state of the art in energy storage systems for hybrid electric vehicles is discussed in this paper along with appropriate background information for facilitating future research in this domain. Specifically, we compare key parameters such as cost, power ???



Flywheel energy storage Flywheel energy storage devices turn surplus electrical energy into kinetic energy in the form of heavy high-velocity spinning wheels. To avoid energy losses, the wheels are kept in a frictionless vacuum by a magnetic field, allowing the spinning to be managed in a way that creates electricity when required.



Most people understand that an SSD is a storage device for a computer that keeps hold of all your programs, files, and whatever else you have on your computer, but not all storage is the same.



However, dependable energy storage systems with high energy and power densities are required by modern electronic devices. One such energy storage device that can be created using components from renewable resources is the supercapacitor . Additionally, it is conformably constructed and capable of being tweaked as may be necessary

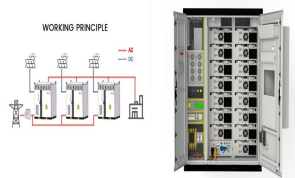


A battery energy storage system (BESS) captures energy from renewable and non-renewable sources and stores it in rechargeable batteries (storage devices) for later use. A battery is a Direct Current (DC) device and when needed, the electrochemical energy is discharged from the battery to meet electrical demand to reduce any imbalance between

ENERGY STORAGE DEVICE BE54 WHAT DOES IT MEAN



Energy storage plays an essential role in modern power systems. The increasing penetration of renewables in power systems raises several challenges about coping with power imbalances and ensuring standards are maintained. Backup supply and resilience are also current concerns. Energy storage systems also provide ancillary services to the grid, like ???



Energy is essential in our daily lives to increase human development, which leads to economic growth and productivity. In recent national development plans and policies, numerous nations have prioritized sustainable energy storage. To promote sustainable energy use, energy storage systems are being deployed to store excess energy generated from ???



Energy storage is the capturing and holding of energy in reserve for later use. Energy storage solutions include pumped-hydro storage, batteries, flywheels and compressed air energy storage. Supercapacitors are electrochemical devices that store energy by collecting electric charges on electrodes (electrical conductors) filled with an

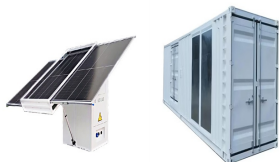


In the past few decades, electricity production depended on fossil fuels due to their reliability and efficiency [1]. Fossil fuels have many effects on the environment and directly affect the economy as their prices increase continuously due to their consumption which is assumed to double in 2050 and three times by 2100 [6] g. 1 shows the current global ???



A storage device is an integral part of the computer hardware which stores information/data to process the result of any computational work. It utilizes inorganic substances from the environment and produces organic compounds that are further used to produce energy and perform various cellular processes. In simple terms, nutrition is the most

ENERGY STORAGE DEVICE BE54 WHAT DOES IT MEAN



Electrical energy storage systems: A comparative life cycle cost analysis. Behnam Zakeri, Sanna Syri, in Renewable and Sustainable Energy Reviews, 2015. 3.4.4.1 Hydrogen storage. Hydrogen energy storage is the process of production, storage, and re-electrification of hydrogen gas. Hydrogen is usually produced by electrolysis and can be stored



Performance of electrolytes used in energy storage system i.e. batteries, capacitors, etc. are have their own specific properties and several factors which can drive the overall performance of the device. Basic understanding about these properties and factors can allow to design advanced electrolyte system for energy storage devices.



This investigation will explore the advancement in energy storage device as well as factors impeding their commercialization. 2. The world and fossil fuel as the entire system can move from 0 to 1320 MW power injections in 12 s by means of managing 6 motor-generators of 330 MW. These motor-generators are activated by reversible Francis



An energy storage device refers to a device used to store energy in various forms such as supercapacitors, batteries, and thermal energy storage systems. It plays a crucial role in ensuring the safety, efficiency, and reliable functioning of microgrids by providing a means to store and release energy as needed.



In cryogenic energy storage, the cryogen, which is primarily liquid nitrogen or liquid air, is boiled using heat from the surrounding environment and then used to generate electricity using a cryogenic heat engine. LTES is better suited for high power density applications such as load shaving,

ENERGY STORAGE DEVICE BE54 WHAT DOES IT MEAN



The flywheel comprises a rotating cylindrical body in a chamber, coupled bearings, and energy transmission device, i.e., generator/motor together mounted with a common shaft [15], [30], [36], [37]. The energy maintained by the constantly rotating flywheel is converted to electrical energy by means of a transmission device.



A battery energy storage system (BESS) captures energy from renewable and non-renewable sources and stores it in rechargeable batteries (storage devices) for later use. A battery is a ???



For example: 60 MW battery system with 4 hours of storage. What does it mean? 60 MW means that the system can generate electricity at the maximum power of 60 MW for 4 hours straight. That also means that the total amount of energy stored in the system is: $60 \text{ MW} \times 4 \text{ hours} = 240 \text{ MWh}$. But it can also provide less power if needed.



Energy Toolbase provides developers that install energy storage paired with Acumen EMS with project-level support services, including hardware procurement, commissioning support, microgrid engineering, ongoing monitoring, incentive administration, and more. Connect with our team today to talk about your energy storage projects.



3 ? Higher round-trip efficiency means less energy is lost. Formula:
Effective Capacity (kWh) = Usable Capacity (kWh) x Round-Trip Efficiency (%) For example, if you have a usable capacity of 90 kWh with an efficiency of ???

ENERGY STORAGE DEVICE BE54 WHAT DOES IT MEAN



This means that even if a great number of thermoelectric increases, the voltage supplied from the thermoelectric generator's effect on the internal resistance is still undesirable. The goal of energy storage devices is to reduce energy and power losses and maintain improved voltage regulation for load buses and enhance the security system.



In fact, some traditional energy storage devices are not suitable for energy storage in some special occasions. Over the past few decades, microelectronics and wireless microsystem technologies have undergone rapid development, so low power consumption micro-electro-mechanical products have rapidly gained popularity [10, 11]. The method for supplying ???



The selection of an energy storage device for various energy storage applications depends upon several key factors such as cost, environmental conditions and mainly on the power along with energy density present in the device. The pseudocapacitor or redox capacitor stores energy by Faradaic mechanism by means of the pseudocapacitive



Battery energy storage systems, or BESS, are a type of energy storage solution that can provide backup power for microgrids and assist in load leveling and grid support. There are many types of BESS available depending on your needs and preferences, including lithium-ion batteries, lead-acid batteries, flow batteries, and flywheels.



Energy storage systems for electricity generation operating in the United States Pumped-storage hydroelectric systems. Pumped-storage hydroelectric (PSH) systems are the oldest and some of the largest (in power and energy capacity) utility-scale ESSs in the United States and most were built in the 1970's. PSH systems in the United States use electricity from electric power grids to ???

ENERGY STORAGE DEVICE BE54 WHAT DOES IT MEAN



A review of energy storage types, applications and recent developments. S. Koochi-Fayegh, M.A. Rosen, in Journal of Energy Storage, 2020 2.4 Flywheel energy storage. Flywheel energy storage, also known as kinetic energy storage, is a form of mechanical energy storage that is a suitable to achieve the smooth operation of machines and to provide high power and energy ???



A battery energy storage system is an electrochemical device that stores energy when demand for energy is low and releases it when demand is high. which means that they rely on uncontrollable environmental factors to function. Wind and solar power can only generate power when the sun is shining or the wind is blowing, meaning some days they



It's helpful to know exactly what energy storage is. It means having a way to capture energy at the time it is produced and save it for use at a later date. A solar panel produces electricity all day, but to use that energy at night, you ???



Supercapacitors are one of the most efficient energy storage devices. As they have many advantages, supercapacitors are continuously being used in devices and systems that are eager for a high-power supply, opposite to the batteries. the ten-second mean value of the frequency during 99.5% of each week must be within 50 Hz ? 1% and 50 Hz



Overview of Battery Energy Storage Systems. A battery energy storage system consists of multiple battery packs connected to an inverter. The inverter converts direct current (DC) from the batteries into alternating current (AC), which is suitable for grid-connected applications or for powering electric loads.