

# ENERGY STORAGE INVERTER POWER SOURCE



Can a storage system be used with a renewable source? Accordingly, a storage system can be used in combination with a renewable source or a hybrid of various RESs for better energy exchange. In this way, both RES and ESS will contribute to provide the dynamic control and grid inertia to the power system.



How do you choose an energy storage system? In general, the choice of an ESS is based on the required power capability and time horizon (discharge duration). As a result, the type of service required in terms of energy density (very short, short, medium, and long-term storage capacity) and power density (small, medium, and large-scale) determine the energy storage needs.



What is a battery energy storage system? storage applications used in the electrical system. For ex-Battery energy storage system (BESS) have been used for ample, the rated voltage of a lithium battery cell ranges some decades in isolated areas, especially in order to sup- between 3 and 4 V/cell, while the BESS are typically ply energy or meet some service demand.



What type of storage system is used for converter integration? As it can be observed, an AC grid is mainly considered for converter integration. Besides, the battery, supercapacitor, and fuel cell (with hydrogen tank) are the most used storage systems. It is worth noting that the ???Generic DC storage??? in the table denotes cases wherein no specific considerations are applied regarding storage technology.



What is energy storage? Energy storage is an indirect measurement of the volume of the components. According to, 2 L and 3 L converters have an energy storage requirement in the dc-link between 2 and 4 J/kVA. where  $I_n$ ,  $N$ , and  $V_{dc}$  designate the nominal arm current, number of cells per arm, and average operating voltage of the capacitor, respectively.

# ENERGY STORAGE INVERTER POWER SOURCE



Are energy storage technologies viable for grid application? Energy storage technologies can potentially address these concerns viably at different levels. This paper reviews different forms of storage technology available for grid application and classifies them on a series of merits relevant to a particular category.



Integrating these with battery storage shows a big leap in energy storage and usage. Inverters have become a cornerstone of modern electrical systems. In wrapping up, inverters link power sources to our electronic devices beautifully. They change DC into AC power. This is key in both old and new energy fields.



Multiple MPS-125 energy storage inverters can be paralleled together to scale to meet the needs of any behind-the-meter energy storage installation. (voltage source) operation, also called UF mode. In islanded mode, the MPS-125 accepts Voltage (U) and Frequency (F) setpoints. need for external power and can start distribution networks



Single phase low voltage energy storage inverter / Integrated 2 MPPTs for multiple array orientations / Industry leading 125A/6kW max charge/discharge rating. Single phase low voltage energy storage inverter / Uninterrupted power supply, 20ms reaction / 5kW backup power to support more important loads.



If you want even more outlets, or if you plan to power one or more devices requiring more than 1,000 W total, get the EcoFlow Delta 1300.. It has more output options???six AC outlets, four USB-A

# ENERGY STORAGE INVERTER POWER SOURCE



In this paper, a control strategy combining quasi-PR control and harmonic compensation is applied to an energy storage inverter system to achieve closed-loop control and waveform optimization of the inverter. An experimental storage inverter system for both purely resistive load and nonlinear load conditions is built to verify the correctness of the theoretical analysis and ???



A power inverter, inverter, or invertor is a power electronic device or circuitry that changes direct current (DC) to alternating current (AC). [1] The resulting AC frequency obtained depends on the particular device employed. Inverters do ???



Sungrow, a professional solar inverter & energy storage system provider, has offered new energy solutions in C& I, residential and utility-scale fields. Combined with other forms of regenerative energy sources, solar power is becoming part of the global energy mix. We have been doing our part since 1997.



The Tesla Powerwall 3 represents a complete reimagining of home energy storage, combining a 13.5kWh battery system with an integrated solar inverter capable of handling up to 20kW of ???

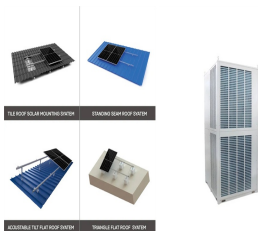


The inverter arc welding power source, also known as an arc welding inverter, is a new type of welding power source. This type of power source generally takes the three-phase mains frequency (50Hz) AC network voltage, rectifies and filters it through an input rectifier, converting it into DC.

# ENERGY STORAGE INVERTER POWER SOURCE



Energy Storage Inverter - Market ??? Electricity storage device sales - \$15B (source ESA) ??? "Mature" products are a multi billion \$ market ??? "Emerging" market segment is small but growing ??? Strong demand for improved power quality as dependence on electrical equipment increases ??? computers ???internet ??? communications



Types of Inverters. There are several types of inverters that might be installed as part of a solar system. In a large-scale utility plant or mid-scale community solar project, every solar panel might be attached to a single central inverter. String inverters connect a set of panels???a string???to one inverter. That inverter converts the power produced by the entire string to AC.



Power Conditioning System (PCS) Delta's Power Conditioning Systems (PCS) are bi-directional inverters designed for energy storage systems. Ranging from 100 kW to 4 MW, our PCS comply with global certifications and seamlessly integrate ???



problem can be resolved with an energy storage system, then solar is a strong contender for future energy supply. Even though solar will always share the renewable energy market with other sources, growth in the industry has been strong and is ???



An electric vehicle uses multiple energy-storage systems to power the traction motor. Dual-source inverters (DSIs) are used for single-stage power conversion by skipping the dc/dc boost converter

# ENERGY STORAGE INVERTER POWER SOURCE



The main difference with energy storage inverters is that they are capable of two-way power conversion ??? from DC to AC, and vice versa. It's this switch between currents that enables energy storage inverters to store energy, as the name implies. In a regular PV inverter system, any excess power that you do not consume is fed back to the grid.



Sugrow provides comprehensive portfolio, which includes PV inverters and battery energy storage systems. Sungrow PV inverters are designed with cutting-edge technology to maximize solar energy generation. Our advanced battery energy storage systems enable efficient energy management and utilization by complementing our PV inverters.

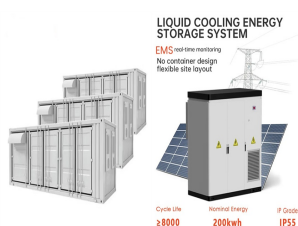


An Energy Storage System (ESS) is a specific type of power system that integrates a power grid connection with a Victron Inverter/Charger, Loads are powered from PV when that power source is available. Feed-in is optional and can be enabled or disabled depending on local regulations.

### 1.2. Components.



Energy storage and power conversion systems to dramatically advance our resilient, clean energy future. We are powering the world's leading brands and institutions ??? with reliable solutions in energy storage systems, inverters, DC converters, rectifiers, and custom transformers.



The Winners Are Set to Be Announced for the Energy Storage Awards! Energy Storage Awards, 21 November 2024, Hilton London Bankside Storm disruption to power supply "demonstrates need for long-duration energy storage" in New South Wales, Australia Kehua Tech ranked No. 1 in China and No. 3 worldwide for energy storage inverter market

# ENERGY STORAGE INVERTER POWER SOURCE



A power inverter, inverter, or invertor is a power electronic device or circuitry that changes direct current (DC) to alternating current (AC). [1] The resulting AC frequency obtained depends on the particular device employed. Inverters do the opposite of rectifiers which were originally large electromechanical devices converting AC to DC. [2]The input voltage, output voltage and ???



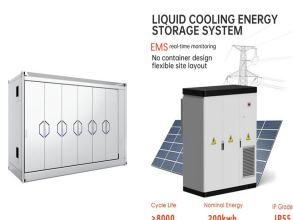
Replacing centralized and dispatchable bulk power production with diverse small, medium-scale, and large-scale non-dispatchable and renewable-based resources is revolutionizing the power grid. The Energy Storage Systems (ESSs) have also been employed ???



Dynapower's CPS-3000 and CPS-1500 energy storage inverters are the world's most advanced, designed for four-quadrant energy storage applications. s black start technology can start distribution networks ???



Energy / generation services. Utility-scale storage refers to technologies connected to the power grid that can store energy and then supply it back to the grid at a more advantageous time ??? for example, at night, when no solar power is available, or during a weather event that disrupts electricity generation.



this problem, increasing the energy-storage power sources is usually used to improve the reliability of a system. In order to provide support for the voltage, the energy-storage power source inverter needs a method to control the voltage source.



# ENERGY STORAGE INVERTER POWER SOURCE



In summary, batteries offer portability, energy storage, backup power, noiseless operation, and energy efficiency, making them a versatile and practical choice for powering a wide range of applications. While battery and inverter power sources are popular choices for providing electricity in various applications, there are alternative



Powerwall 3: Complete Home Energy Storage with Built-in Solar Inverter. The Tesla Powerwall 3 is a residential energy storage system that combines a 13.5 kWh battery with an integrated ???



Recent works have highlighted the growth of battery energy storage system (BESS) in the electrical system. In the scenario of high penetration level of renewable energy in the distributed generation, BESS plays a key role in the effort to combine a sustainable power supply with a reliable dispatched load. Several power converter topologies



Source: Lin, Seo, Vijayshankar, Johnson, Dhople, " Impact of Increased Inverter- based Resources on Power System Small- signal Stability," IEEE PESGM, 2021. Stable and unstable configurations evaluate with an exhaustive combination of: ??? synchronous generators ??? droop-controlled grid-forming (GFM) inverters



Discover Suoer's premium range of solar inverters and power inverters designed for reliable renewable energy solutions. Trusted by customers worldwide for exceptional performance and durability. battery charger, solar pump inverter, etc. Our company has been specialized in the manufacture and export of home power supply for more than 10 years