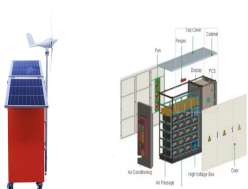
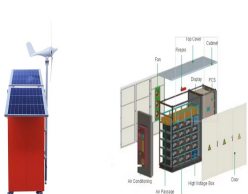


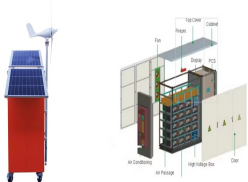
# ENERGY STORAGE METHOD PUMPED STORAGE



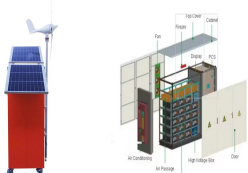
What is pumped hydroelectric energy storage (PHES)? Concluding remarks An extensive review of pumped hydroelectric energy storage (PHES) systems is conducted, focusing on the existing technologies, practices, operation and maintenance, pros and cons, environmental aspects, and economics of using PHES systems to store energy produced by wind and solar photovoltaic power plants.



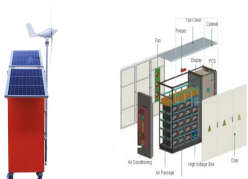
What is pumped storage? Pumped storage is the largest-capacity form of grid energy storage available and as of March 2012. As reported by the Electric Power Research Institute (EPRI) PHES accounts for more than 99% of bulk storage capacity worldwide, representing around 127 GW . The global PHES capacities of different countries are summarized in Table 1 .



What is a pumped-storage system? Pumped-storage schemes currently provide the most commercially important means of large-scale grid energy storage and improve the daily capacity factor of the generation system. The relatively low energy density of PHES systems requires either a very large body of water or a large variation in height.

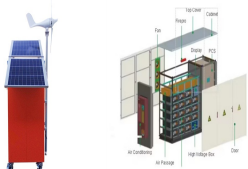


What is pumped storage hydropower (PSH)? Pumped storage hydropower (PSH) is a type of hydroelectric energy storage. It is a configuration of two water reservoirs at different elevations that can generate power as water moves down from one to the other (discharge), passing through a turbine. The system also requires power as it pumps water back into the upper reservoir (recharge).

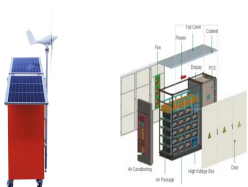


What is pumped hydro storage? Most existing pumped hydro storage is river-based in conjunction with hydroelectric generation. Water can be pumped from a lower to an upper reservoir during times of low demand and the stored energy can be recovered at a later time.

# ENERGY STORAGE METHOD PUMPED STORAGE



Can pumped hydroelectric energy storage maximize the use of wind power? Katsaprakakis et al. studied the feasibility of maximizing the use of wind power in combination with existing autonomous thermal power plants and wind farms by adding pumped hydroelectric energy storage in the system for the isolated power systems of the islands Karpathos and Kasos located in the South-East Aegean Sea.



As renewable energy production is intermittent, its application creates uncertainty in the level of supply. As a result, integrating an energy storage system (ESS) into renewable energy systems could be an effective strategy to provide energy systems with economic, technical, and environmental benefits. Compressed Air Energy Storage (CAES) has a?



OverviewBasic principleTypesEconomic efficiencyLocation requirementsEnvironmental impactPotential technologiesHistory



A pumped-hydro energy storage method, also called hydrostorage or pumped storage, is a simple method of storing energy. By shifting peak loads from peak hours to off-peak hours, hydroelectric energy storage balances electricity supply and demand. Pumped energy storage works on the following principles:



Watch the on-demand webinar about different energy storage applications  
4. Pumped hydro. Energy storage with pumped hydro systems based on large water reservoirs has been widely implemented over much of the past century to become the most common form of utility-scale storage globally.

# ENERGY STORAGE METHOD PUMPED STORAGE



The best aspect of pumped hydro as an energy storage method is that it is relatively inexpensive and long-lasting. It has very high round-trip efficiency, which means little power is wasted while it generates electricity. Most are designed to store between 6-20 hours of energy, with the amount of energy dependent on the system's size.



Pumped storage hydroelectric projects have been providing energy storage capacity and transmission grid ancillary benefits in the United States and Europe since the 1920s. Today, the 43 pumped-storage projects operating in the United States provide around 23 GW (as of 2017), or nearly 2 percent, of the capacity of the electrical supply system



Pumped storage hydro is a mature energy storage method. It uses the characteristics of the gravitational potential energy of water for easy energy storage, with a large energy storage scale, fast adjustment speed, flexible operation and high efficiency [1]. The pumped storage power station, as the equipment for the peak shaving, frequency modulation and a?



Pumped-Hydro Energy Storage Potential energy storage in elevated mass is the basis for . pumped-hydro energy storage (PHES) Energy used to pump water from a lower reservoir to an upper reservoir Electrical energy. input to . motors. converted to . rotational mechanical energy Pumps. transfer energy to the water as . kinetic, then . potential energy



However, mechanical engineers and physicists alike have realized that there may be very efficient methods of using adiabatic compressors and expandersa??such as Brayton turbinesa??to create a method of storing and extracting heat energy mechanically. Thus, heat storage begins to look like pumped-hydro storage, and for this reason the new

# ENERGY STORAGE METHOD PUMPED STORAGE



Out of all the current technologies, pumped storage is the most extensively used method for storing energy on a large-scale and for an electric grid's power modulation. 26 It is the most appealing option as it can hold a large amount of potential energy in the reservoirs. 27 Pumped-storage hydroelectricity (PSH) balances the load in electric power systems.



Rogean, A., Girard, R. & Kariniotakis, G. A generic GIS-based method for small Pumped Hydro Energy Storage (PHES) potential evaluation at large scale. Appl. Energy 197, 241a??253 (2017).



Pumped hydro energy storage is the largest capacity and most mature energy storage technology currently available [9] and for this reason it has been a subject of intensive studies in a number of different countries [12,13]. In fact, the first central energy storage station was a pumped hydro energy storage system built in 1929 [1].

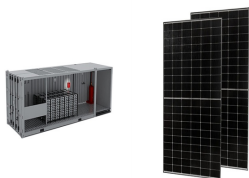


Types of Energy Storage Methods - Renewable energy sources aren't always available, and grid-based energy storage directly tackles this issue. Pumped-storage is a common type of energy storage. Hydroelectric power is generally used to store excess grid power. Electricity from the grid is often used to pump water up into a tank or lake when



There are three main types of MES systems for mechanical energy storage: pumped hydro energy storage (PHES), compressed air energy storage (CAES), and flywheel energy storage (FES). Each system uses a different method to store energy, such as PHES to store energy in the case of GES, to store energy in the case of gravity energy stock, to store

# ENERGY STORAGE METHOD PUMPED STORAGE



The various types of energy storage can be divided into many categories, and here most energy storage types are categorized as electrochemical and battery energy storage, thermal energy storage, thermochemical energy storage, flywheel energy storage, compressed air energy storage, pumped energy storage, magnetic energy storage, chemical and



The objective of the present research is to compare the energy and exergy efficiency, together with the environmental effects of energy storage methods, taking into account the options with the highest potential for widespread implementation in the Brazilian power grid, which are PHS (Pumped Hydro Storage) and H<sub>2</sub> (Hydrogen). For both storage technologies, a?



This study innovatively combines a set of methods to assess the economic potential of pumped hydro energy storage. It first provides a method based on geographic information systems to study the potential of pumped-hydro for different topologies. Second, using cost estimates for each identified site, cost-potential curves are derived.



This chapter specifically dwells on energy storage methods and hence provides the basic aspects of the chemical, electrochemical, electrical, mechanical, and thermal energy storage techniques. In comparison to mechanical energy storage methods, such as pumped hydro or compressed air, batteries are compact, affordable, and readily applicable



Pumped storage hydropower (PSH) plants are storage energy systems that represents one of the most sustainable, economical, New Conceptions and Constructive Methods for Pumped Storage Hydropower Plants. In: JA?drzejewska, A., Kanavaris, F., Azenha, M., Benboudjema, F., Schlicke, D. (eds) International RILEM Conference on Synergising

# ENERGY STORAGE METHOD PUMPED STORAGE



Two other long-used forms of energy storage are pumped hydro storage and thermal energy storage. Pumped hydro storage, which is a type of hydroelectric energy storage, was used as early as 1890 in Italy and Switzerland before spreading around the world. The thermal energy storage method used at solar-thermal electric power plants is known

## Commercial and Industrial ESS

Air Cooling / Liquid Cooling

- Budget-Friendly Solution
- Renewable Energy Integration
- Minimal Impact on Service Equipment



Congestion in power flow, voltage fluctuation occurs if electricity production and consumption are not balanced. Application of some electrical energy storage (EES) devices can control this problem. Pumped hydroelectricity storage (PHS), electro-chemical batteries, compressed air energy storage, flywheel, etc. are such EES. Considering the technical a?|



A generic GIS-based method for small Pumped Hydro Energy Storage (PHES) potential evaluation at large scale. Applied Energy, 197 (2017), pp. 241-253. Opportunities and barriers to pumped-hydro energy storage in the United States. Renewable and Sustainable Energy Reviews, 15 (1) (2011), pp. 839-844.



Pumped storage is the process of storing energy by using two vertically separated water reservoirs. Water is pumped from the lower reservoir up into a holding reservoir. Pumped storage facilities store excess energy as gravitational potential energy of water. Since these reservoirs hold such large volumes of water, pumped water storage is considered to be a large scale a?|



Pumped-storage hydropower (PSH) is by far the most popular form of energy storage in the United States, where it accounts for 95 percent of utility-scale energy storage. According to the U.S. Department of Energy (DOE), pumped-storage hydropower has increased by 2 gigawatts (GW) in the past 10 years.



# ENERGY STORAGE METHOD PUMPED STORAGE



Storage capacity is the amount of energy extracted from an energy storage device or system; usually measured in joules or kilowatt-hours and their multiples, it may be given in number of hours of electricity production at power plant nameplate capacity; when storage is of primary type (i.e., thermal or pumped-water), output is sourced only with



by Yes Energy. While utility-scale batteries are growing in numbers, pumped hydro storage is the most used form of energy storage on the grid today. There are 22 gigawatts of pumped hydro energy storage in the US today, which represents 96% of all energy storage in the US.. Source: The C Three Group's North American Electric Generation Project Database



energy using materials or fluids. These methods include compressed air energy storage, with constant or variable. temperatures; gravity energy storage using suspended. loads; and pumped hydroelectric energy storage. a?c Thermal methods, where energy is stored as a tempera-ture difference in materials or fluids to be used later for



As we can see from Table 1, the pumped hydro storage and the compressed air energy storage are the least expensive methods for large-scale and long-duration energy storage methods. However, while natural land slopes can be abundant in many countries of the world, suitably deep underground salt caverns are usually much fewer [ 28 ].



The solution lies in the exploitation of the potential that renewable energy sources (RES) present and in the use of energy storage methods like pumped storage and hydrogen for better energy management. Energy from RES is generated through natural processes; it is also limitless, economical, and clean but is characterized by stochastic behavior