

# ENERGY STORAGE POWER CELL CAPACITY



How much energy is stored in the world? Worldwide electricity storage operating capacity totals 159,000 MW, or about 6,400 MW if pumped hydro storage is excluded. The DOE data is current as of February 2020 (Sandia 2020). Pumped hydro makes up 152 GW or 96% of worldwide energy storage capacity operating today.



What is the largest energy storage technology in the world? Pumped hydro makes up 152 GW or 96% of worldwide energy storage capacity operating today. Of the remaining 4% of capacity, the largest technology shares are molten salt (33%) and lithium-ion batteries (25%). Flywheels and Compressed Air Energy Storage also make up a large part of the market.



What is the current energy storage capacity of a pumped hydro power plant? The DOE data is current as of February 2020 (Sandia 2020). Pumped hydro makes up 152 GW or 96% of worldwide energy storage capacity operating today. Of the remaining 4% of capacity, the largest technology shares are molten salt (33%) and lithium-ion batteries (25%).



What is a battery energy storage system? A battery energy storage system (BESS) is an electrochemical device that charges (or collects energy) from the grid or a power plant and then discharges that energy at a later time to provide electricity or other grid services when needed.



What is power capacity value? Capacity Value (\$): The monetary value of the contribution of a generator (conventional, renewable, or storage) to balancing supply and demand when generation is scarce. Operating Reserves and Ancillary Services: To maintain reliable power system operations, generation must exactly match electricity demand at all times.

# ENERGY STORAGE POWER CELL CAPACITY



How many GW of battery storage capacity are there in 2022? Batteries are typically employed for sub-hourly, hourly and daily balancing. Total installed grid-scale battery storage capacity stood at close to 28GW at the end of 2022, most of which was added over the course of the previous 6 years. Compared with 2021, installations rose by more than 75% in 2022, as around 11GW of storage capacity was added.



Eric Parker, Hydrogen and Fuel Cell Technologies Office: Hello everyone, and welcome to March's H2IQ hour, part of our monthly educational webinar series that highlights research and development activities funded by the U.S. Department of Energy's Hydrogen and Fuel Cell Technologies Office, or HFTO, within the Office of Energy Efficiency and Renewable



Storage capacity is the amount of energy extracted from an energy storage device or system; usually measured in joules or kilowatt-hours and their multiples, it may be given in number of hours of electricity production at power plant nameplate capacity; when storage is of primary type (i.e., thermal or pumped-water), output is sourced only with



Energy storage systems are increasingly used as part of electric power systems to solve various problems of power supply reliability. With increasing power of the energy storage systems and the share of their use in electric power systems, their influence on operation modes and transient processes becomes significant.

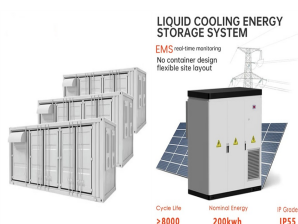


You can use this energy to power the devices and appliances in your home day and night, during outages or when you want to go off-grid. With customizable power modes, you can optimize your stored energy for outage protection, electricity bill savings and more. Energy Capacity. 13.5 kWh 1. On-Grid Power. 11.5 kW continuous. Backup Power. 11.

# ENERGY STORAGE POWER CELL CAPACITY



It encompasses functions such as cell monitoring, power management, temperature management, charging and discharging operations, health status monitoring, data acquisition, cell protection, and lifespan estimation [5]. Energy storage capacity is a battery's capacity. As batteries age, this trait declines.



Energy storage systems for electricity generation operating in the United States Pumped-storage hydroelectric systems. Pumped-storage hydroelectric (PSH) systems are the oldest and some of the largest (in power and energy capacity) utility-scale ESSs in the United States and most were built in the 1970's. PSH systems in the United States use electricity from electric power grids to ???



Just as we reported from the event last year, exactly how to qualify for the 10% domestic content adder to the 48E ITC for using domestically-produced BESS is still unclear, and further guidance is expected on it soon. "Terribly important" to access 45X credit . The US\$35 per kWh 45X tax credit for battery cell manufacturing (45X) and associated US\$10 per kWh for ???



Since the hydrogen storage solution is based on open conversion systems (e.g., electrolyser and fuel cell), the stored energy volume depends only on the storage capacity, and it does not affect the power rating of the conversion systems; in this way, substantial increases in the investment costs can be avoided [19].



Battery storage in the power sector was the fastest growing energy technology in 2023 that was commercially available, with deployment more than doubling year-on-year. undertakes well over half of global raw material processing for lithium and cobalt and has almost 85% of global battery cell production capacity. Europe, the United States

# ENERGY STORAGE POWER CELL CAPACITY



FCEV fuel cell electric vehicle FERC Federal Energy Regulatory Commission TES thermal energy storage UPS uninterruptible power source xEV electric vehicle (light-, medium-, and heavy-duty classes)

Figure 61. TES energy capacity deployments by region



Energy is essential in our daily lives to increase human development, which leads to economic growth and productivity. In recent national development plans and policies, numerous nations have prioritized sustainable energy storage. To promote sustainable energy use, energy storage systems are being deployed to store excess energy generated from ???



Power versus Energy Cell Cost. Previously we have looked at the fundamental differences between the power and energy cells, but why is there a Power versus Energy Cell Cost difference? Typically, energy cells cost ~80-100 \$/kWh in 2024 and power cells ~150-300 \$/kWh. Although, there are some exotic power cells that cost ~\$600/kWh.



Battery Capacity is the measure of the total energy stored in the battery and it helps us to analyze the performance and efficiency of the batteries. As we know, a battery is defined as an arrangement of electrochemical cells that works as a power source when there is no power source available and is used widely in today's world. From small electronic gadgets ???



ENPOLITE: Comparing Lithium-Ion Cells across Energy, Power, Lifetime, and Temperature. Philipp Dechent \* Philipp Dechent. have been identified as the main driver of capacity fade during storage. In the high SoC regime where the graphite anode is lithiated more than 50%, the low anode potential accelerates the loss of cyclable lithium, which

# ENERGY STORAGE POWER CELL CAPACITY



The effectiveness of the electrolysis process, storage pressure, hydrogen storage capacity (in kg), and fuel cell power output are important parameters. The successful integration of HESS with the building's energy management system depends on certain specifics. Enslin, J.H.R. Dynamic reactive power and energy storage for integrating



Energy storage systems (ESS) are highly attractive in enhancing the energy efficiency besides the integration of several renewable energy sources into electricity systems. While choosing an energy storage device, the most significant parameters under consideration are specific energy, power, lifetime, dependability and protection [1]. On the



Jindal India Renewable Energy, a part of the BC Jindal Group, has announced its foray into battery energy storage systems (BESS). The company plans to build 1 GWh lithium ferro phosphate (LFP) battery pack assembly line by 2025 and foray into battery cell manufacturing with 5 GWh capacity by 2027.



MITEI's three-year Future of Energy Storage study explored the role that energy storage can play in fighting climate change and in the global adoption of clean energy grids. Replacing fossil ???



Short-term energy storage demand is typically defined as a typical 4-hour storage system, referring to the ability of a storage system to operate at a capacity where the maximum power delivered



- High specific energy and stability - Works as an energy cell: Expensive, limited power capacity: Medical application, industry, and power train: Li 2 TiO 3: 3000???7000- In designing an efficient BESS, power rating and battery storage capacity are needed to be optimized accordingly.

# ENERGY STORAGE POWER CELL CAPACITY



Calculate the energy content of a Ni-MH battery cell, which has the cell voltage of 1.2 V and current capacity of 2200 mAh. Step 1 . Convert the battery cell current capacity from [mAh] to [Ah] by dividing the [mAh] to 1000:



Eight scenarios where high efficiency reversible solid oxide cells (rSOC) are combined with an offshore wind farm are identified. Thanks to the PyPSA power system modelling tool combined with a sensitivity study, optimized rSOC system capacities, hydrogen storage capacities, and subsea cable connection capacities are investigated under various ???



Lithium-ion batteries (like those in cell phones and laptops) are among the fastest-growing energy storage technologies because of their high energy density, high power, and high efficiency. Currently, utility-scale applications of lithium-ion batteries can only provide power for short durations, about 4 hours.



MITEI's three-year Future of Energy Storage study explored the role that energy storage can play in fighting climate change and in the global adoption of clean energy grids. Replacing fossil fuel-based power generation with power generation from wind and solar resources is a key strategy for decarbonizing electricity. Storage enables electricity systems to remain in??? Read more



the energy storage system. Specifically, dividing the capacity by the power tells us the duration,  $d$ , of filling or emptying:  $d = E/P$ . Thus, a system with an energy storage capacity of 1,000 Wh and a power of 100 W will empty or fill in 10 hours, while a storage system with the same capacity but a power of 10,000 W will empty or fill in six

# ENERGY STORAGE POWER CELL CAPACITY



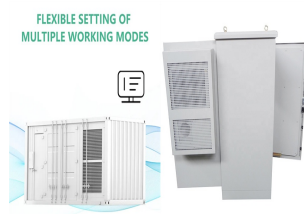
Easily monitor energy consumption and solar production, battery use and savings over time right from your phone. Plus, when you toggle on Outage Guard\*, your system will automatically shift energy to fill your PWRcell batteries to ensure you'll have maximum backup power when storms and outages are likely in your area.



Energy storage systems designed for microgrids have emerged as a practical and extensively discussed topic in the energy sector. These systems play a critical role in supporting the sustainable operation of microgrids by addressing the intermittency challenges associated with renewable energy sources [1,2,3,4]. Their capacity to store excess energy during periods ???



The first battery???called Volta's cell???was developed in 1800. 2 The first U.S. large-scale energy storage facility was the Rocky River Pumped Storage plant in 1929. 3 Research on energy storage has increased dramatically 2, EES systems are characterized by rated power in W and energy storage capacity in Wh. 7 In 2023,



Every traditional BESS is based on three main components: the power converter, the battery management system (BMS) and the assembly of cells required to create the battery-pack [2]. When designing the BESS for a specific application, there are certain degrees of freedom regarding the way the cells are connected, which rely upon the designer's criterion.



The energy storage capacity is over hundreds of megawatt-hours per shaft, and its RTE is high (75???80%). The piston is made of reinforced rock and concrete for minimising cost. Gravity Power is currently developing a 1 MW demonstration facility in Germany. The USA has the most installed stationary fuel cell power. In 2019, Doosan Fuel