

ENERGY STORAGE POWER STATION BATTERY



What is a battery energy storage system? Battery energy storage systems are generally designed to be able to output at their full rated power for several hours. Battery storage can be used for short-term peak power and ancillary services, such as providing operating reserve and frequency control to minimize the chance of power outages.



What is a battery energy storage system (BESS)? A battery energy storage system (BESS) or battery storage power station is a type of energy storage technology that uses a group of batteries to store electrical energy.



When can energy be stored in batteries? Energy can be stored in batteries for when it is needed. The battery energy storage system (BESS) is an advanced technological solution that allows energy storage in multiple ways for later use.



Who uses battery energy storage systems? The most natural users of Battery Energy Storage Systems are electricity companies with wind and solar power plants. In this case, the BESS are typically large: they are either built near major nodes in the transmission grid, or else they are installed directly at power generation plants.



How does battery energy storage work? By combining battery energy storage with PV solutions, the batteries can mitigate the intermittent nature of renewable power by storing solar power produced during the day for nighttime use, thus guaranteeing a steady supply of power at all times. How does a battery energy storage system work?

ENERGY STORAGE POWER STATION BATTERY



What is a battery storage power plant? Battery storage power plants and uninterruptible power supplies (UPS) are comparable in technology and function. However, battery storage power plants are larger. For safety and security, the actual batteries are housed in their own structures, like warehouses or containers.



On November 16, Fujian GW-level Ningde Xiapu Energy Storage Power Station (Phase I) of State Grid Times successfully transmitted power. The project is mainly invested by State Grid Integrated Energy and CATL, which is the largest single grid-side standalone station-type electrochemical energy storage power station in China so far.



As large-scale lithium-ion battery energy storage power facilities are built, the issues of safety operations become more complex. The existing difficulties revolve around effective battery health evaluation, cell-to-cell variation evaluation, circulation, and resonance suppression, and more. Based on this, this paper first reviews battery health evaluation a?]

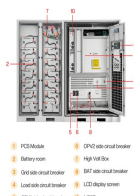


MW Minety battery storage project being developed by Penso Power in Wiltshire, south-west England, UK is the biggest battery storage development in Europe. The grid-scale mega battery energy storage project comprises three adjacent battery storage facilities of 50MW capacity each.



Description []. Kit (Battery) is used to create stationary battery cells, which can provide big and stable energy storage or energy buffer for your power needs. Its energy storage is 3.6MJ or 1kWh. Any battery slowly loses stored power, at 10W when at normal atmosphere and temperature, and 50W if it's in a vacuum or cold atmosphere.

ENERGY STORAGE POWER STATION BATTERY



The performance of the LiFePO 4 (LFP) battery directly determines the stability and safety of energy storage power station operation, and the properties of the internal electrode materials are the core and key to determine the quality of the battery. In this work, two kinds of commercial LFP batteries were studied by analyzing the electrical



Lithium-ion battery energy storage power stations generally adopt a containerized arrangement scheme. Each container serves as an energy storage subsystem, which mainly consists of a battery compartment, a power conversion system (PCS), and a converter transformer. The battery compartment is a crucial component for energy storage in power

Commercial and Industrial ESS

Air Cooling / Liquid Cooling

- Charge/Discharge Station
- Renewable Energy Integration
- Modular Design for Flexible Expansion



Shenzhen World New Power Co.,Ltd: Welcome to buy portable power station, energy storage battery, solar batteries for home, caravan power for sale here from professional manufacturers and suppliers in China. Our factory offers high quality products made in China with competitive price. Contact us for more details.



The operating principle of a battery energy storage system (BESS) is straightforward. Batteries receive electricity from the power grid, straight from the power station, or from a renewable energy source like solar panels or other a?]



At least one USB-C port, 6 mm DC port, and/or car power socket: We don't require each model to have all three, but we prefer power stations that have one or more fast-charging USB-C ports, 6 mm

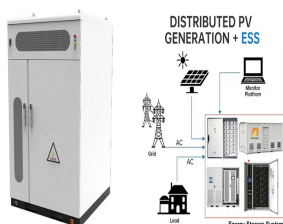
ENERGY STORAGE POWER STATION BATTERY



300 MWh is perhaps big or even "huge" for a battery storage but not generally for storing energy. 300 MWh is about the energy that a typical nuclear power plant delivers in 20 minutes. A modern pumped hydro storage, for example (Nant-de-Dranse, Switzerland), stores about 20 GWh (with turbines for 900 MW) what is about 67 times the 300 MWh.



Energy storage systems for electricity generation operating in the United States Pumped-storage hydroelectric systems. Pumped-storage hydroelectric (PSH) systems are the oldest and some of the largest (in power and energy capacity) utility-scale ESSs in the United States and most were built in the 1970's. PSH systems in the United States use electricity from electric power grids to a?



Capital Power is proposing a battery energy storage system (BESS) installation at the Goreway Power Station (GPS) that would provide up to 40 MW of power storage, with electrical energy output for up to four-hours. The project would be located within the footprint of the existing GPS.



MW Andasol solar power station is a commercial parabolic trough solar thermal power plant, located in Spain. The Andasol plant uses tanks of molten salt to store captured solar energy so that it can continue generating electricity when the sun isn't shining. [1] This is a list of energy storage power plants worldwide, other than pumped hydro storage.



Battery Energy Storage Systems (BESS) are pivotal technologies for sustainable and efficient energy solutions. This article provides a comprehensive exploration of BESS, covering fundamentals, operational mechanisms, benefits, limitations, economic considerations, and applications in residential, commercial and industrial (C& I), and utility a?

ENERGY STORAGE POWER STATION BATTERY

APPLICATION SCENARIOS



MW Dalian Flow Battery Energy Storage Peak-shaving Power Station, with the largest power and capacity in the world so far, was connected to the grid in Dalian, China, on September 29, and it will be put into operation in mid-October. This energy storage project is supported technically by Prof. LI Xianfeng's group from the Dalian Institute of Chemical Physics (DICP) of a?]



The operating principle of a battery energy storage system (BESS) is straightforward. Batteries receive electricity from the power grid, straight from the power station, or from a renewable energy source like solar panels or other energy source, and subsequently store it as current to then release it when it is needed.



How quickly that future arrives depends in large part on how rapidly costs continue to fall. Already the price tag for utility-scale battery storage in the United States has plummeted, dropping nearly 70 percent between 2015 and 2018, according to the U.S. Energy Information Administration. This sharp price drop has been enabled by advances in lithium-ion a?]



In this article, we assumed that the 5G base station adopted the mode of combining grid power supply with energy storage power supply. In the context of time-of- use electricity prices, the base station energy storage was regulated to be charged when the electricity price was low, and discharged to the grid when the electricity price was high



They studied the role for storage for two variants of the power system, populated with load and VRE availability profiles consistent with the U.S. Northeast (North) and Texas (South) regions. The paper found that in both regions, the value of battery energy storage generally declines with increasing storage penetration.

ENERGY STORAGE POWER STATION BATTERY



The Hazelwood Battery Energy Storage System (HBESS) is a 150MW/150MWh utility-scale battery that delivers further electricity grid stability for Victoria. Project is progressing the delivery of a safe, stable and sustainable site after the closure of the mine and power station in 2017. About Eku Energy. Initially established by Macquarie



For a battery energy storage system to be intelligently designed, both power in megawatt (MW) or kilowatt (kW) and energy in megawatt-hour (MWh) or kilowatt-hour (kWh) ratings need to be specified. The power-to-energy ratio is normally higher in situations where a large amount of energy is required to be discharged within a short time period



The International Renewable Energy Agency predicts that with current national policies, targets and energy plans, global renewable energy shares are expected to reach 36% and 3400 GWh of stationary energy storage by 2050. However, IRENA Energy Transformation Scenario forecasts that these targets should be at 61% and 9000 GWh to achieve net zero a?|

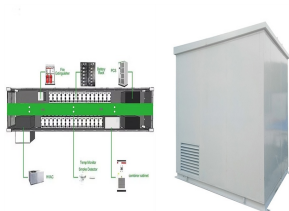


Battery energy storage (BESS) offer highly efficient and cost-effective energy storage solutions. BESS can be used to balance the electric grid, provide backup power and improve grid stability. From renewable energy producers, conventional thermal power plant operators and grid operators to industrial electricity consumers, and offshore



The battery energy storage station (BESS) is the current and typical means of smoothing wind- or solar-power generation fluctuations. Such BESS-based hybrid power systems require a suitable control strategy that can effectively regulate power output levels and battery state of charge (SOC). This paper presents the results of a wind/photovoltaic (PV)/BESS a?|

ENERGY STORAGE POWER STATION BATTERY



Nowadays, an increasing number of battery energy storage station (BESS) is constructed to support the power grid with high penetration of renewable energy sources. However, many accidents occurred in BESSs threaten the development of the BESS, so it is important to develop a protection method for the BESS.