

ENERGY STORAGE POWER STATION FACTORY OPERATION



World's first mobile energy storage container with LFP batteries was put into operation. The world's first LFP BESS power plant (1MW/4MWh). 2008. Establishment of EPRI. Standalone energy storage power plant for desert scenario. Largest grid-connected PV + BESS power plant in the U.S. Largest PV + BESS power plant in South Africa. 2021. BYD



Megafactory , 10,000 Megapack , 40 GWh ??? , ???



Operation and Maintenance 19 5.1 Operation of BESS 20 5.2 Recommended Inspections 21 Energy Storage Systems ESS Factory Acceptance Test FAT Hertz Hz Intermittent Generation Sources IGS Charging Stations Power Plant Solar Panels Substation ESS Office Buildings Hospital Housing Estates



The current trend of increased penetration of renewable energy and reduction in the number of large synchronous generators in existing power systems will inevitably lead to general system weakening.



This has led some flow battery companies like Austria's CellCube and others to focus on the commercial and industrial (C& I) and microgrid segment of the energy storage market, at least for the time being. Energy-Storage.news" publisher Solar Media will host the 1st Energy Storage Summit Asia, 11-12 July 2023 in Singapore. The event will

ENERGY STORAGE POWER STATION FACTORY OPERATION



To solve the problem of the interests of different subjects in the operation of the energy storage power stations (ESS) and the integrated energy multi-microgrid alliance (IEMA), this paper proposes the optimization operation method of the energy storage power station and the IEMA based on the Stackelberg game. In the upper layer, ESS optimizes



Timeline of grid energy storage safety, including incidents, codes & standards, and other safety guidance. In 2014, the U.S. Department of Energy (DOE) in collaboration with utilities and first responders created the Energy Storage Safety Initiative. The focus of the initiative included "coordinating . DOE Energy Storage



300 MWh is perhaps big or even "huge" for a battery storage but not generally for storing energy. 300 MWh is about the energy that a typical nuclear power plant delivers in 20 minutes. A modern pumped hydro storage, for example (Nant-de-Drance, Switzerland), stores about 20 GWh (with turbines for 900 MW) what is about 67 times the 300 MWh.



9 ? It is reported that the Longyuan Energy Storage and Sharing Power Station, located in the High-Tech Development Zone of Tianchang city, Chuzhou, is an environmentally friendly new energy power



The project is located in the outer sea area of Wengle Reclamation in Yueqing, Zhejiang Province, and adopted Chint Power's POWER BLOCK2.0 liquid-cooling energy storage system. Chint Power's POWER BLOCK2.0 liquid-cooling energy storage system combines three major advantages: high specific energy, high performance, and high safety.

ENERGY STORAGE POWER STATION FACTORY OPERATION



According to the dynamic distribution mode of the above energy storage power stations, when the system energy storage output power is stored, the energy storage power station that is in the critical over-discharge state can absorb the extra energy storage of other energy storage power stations and still maintain the charging state, so as to



MW Dalian Flow Battery Energy Storage Peak-shaving Power Station, with the largest power and capacity in the world so far, was connected to the grid in Dalian, China, on September 29, and it will be put into operation in mid-October. This energy storage project is supported technically by Prof. LI Xianfeng's group from the Dalian Institute of Chemical Physics (DICP) of ???



The participation strategy of the energy storage power plant in the energy arbitrage and frequency regulation service market is depicted in Fig. 15, while the SOC curve of the energy storage power plant is presented in Fig. 16. Upon analyzing the aforementioned scenarios, it is evident that the BESS can generate revenue in both markets.

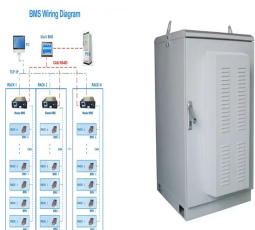


On November 16, Fujian GW-level Ningde Xiapu Energy Storage Power Station (Phase I) of State Grid Times successfully transmitted power. The project is mainly invested by State Grid Integrated Energy and CATL, which is the largest single grid-side standalone station-type electrochemical energy storage power station in China so far.



MW Andasol solar power station is a commercial parabolic trough solar thermal power plant, located in Spain. The Andasol plant uses tanks of molten salt to store captured solar energy so that it can continue generating electricity when the sun isn't shining. [1] This is a list of energy storage power plants worldwide, other than pumped hydro storage.

ENERGY STORAGE POWER STATION FACTORY OPERATION



The installed power capacity of China arrived 2735 GW (GW) by the end of June in 2023 (Fig. 1 (a)), which relied upon the rapid development of renewable energy resources and the extensive construction of power grid systems during the past decade [1]. The primary power sources in China consist of thermal power (50 %), hydropower (15 %), wind power (14 %), and ???



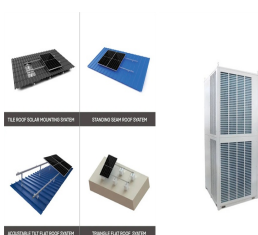
Pumped-hydro energy storage (PHES) is an effective method of massively consuming the excess energy produced by renewable energy systems such as wind and photovoltaic (PV) [1]. The common forms are conventional PHES with reversible pump turbines [2] and mixed PHES with conventional hydropower turbines and energy storage pumps (ESP) ???



As the renewable energy fluctuating in the power grid, the traditional coal-fired power plant needs to operate on the extremely low load, so as to increase the share of renewable energy.



Expansion into the Tibetan market: ZOE got approval of 3 photovoltaic projects, totally 80MW, and 5 energy storage power stations with total installed capacity of 3.43GWh. Establishment of Shanghai ZOE Energy Storage Technology Co., Ltd. Jiangxi intelligent factory is completed and put into operation, and the product is delivered and accepted



With the development of the new situation of traditional energy and environmental protection, the power system is undergoing an unprecedented transformation[1]. A large number of intermittent new energy grid-connected will reduce the flexibility of the current power system production and operation, which may lead to a decline in the utilization of power generation infrastructure and ???

ENERGY STORAGE POWER STATION FACTORY OPERATION



U.S. battery storage capacity has been growing since 2021 and could increase by 89% by the end of 2024 if developers bring all of the energy storage systems they have planned on line by their intended commercial operation dates. Developers currently plan to expand U.S. battery capacity to more than 30 gigawatts (GW) by the end of 2024, a capacity that would ???



In order to promote the deployment of large-scale energy storage power stations in the power grid, the paper analyzes the economics of energy storage power stations from three aspects of ???



The pumped storage power station (PSPS) is a special power source that has flexible operation modes and multiple functions. With the rapid economic development in China, the energy demand and the peak-valley load difference of ???



SCU Mobile Battery Energy Storage System for Emergency Power Supply for HK Electric. SCU provides HK Electric with a green mobile battery storage system. This system is powered by batteries, which not only helps it solve power supply problems more easily and conveniently but also avoids air and noise pollution during operation, minimizing the impact on the surrounding ???



Electric power generation Optimize GTCC operation with BESS (Battery Energy Storage System) As efforts to decarbonize gather pace, while concerns remain about reliability, power producers that want to survive and grow must add renewable sources of electricity to the mix.

ENERGY STORAGE POWER STATION FACTORY OPERATION



Abstract: As large-scale lithium-ion battery energy storage power facilities are built, the issues of safety operations become more complex. The existing difficulties revolve ???