

ENERGY STORAGE POWER STATION LAYOUT PICTURES



Can energy storage power stations be adapted to new energy sources? Through the incorporation of various aforementioned perspectives, the proposed system can be appropriately adapted to new power systems for a myriad of new energy sources in the future. Table 2. Comparative analysis of energy storage power stations with different structural types. storage mechanism; ensures privacy protection.



Should energy storage power stations be scaled? In addition, by leveraging the scaling benefits of power stations, the investment cost per unit of energy storage can be reduced to a value lower than that of the user's investment for the distributed energy storage system, thereby reducing the total construction cost of energy storage power stations and shortening the investment payback period.



What are the parameters of a battery energy storage system? Several important parameters describe the behaviors of battery energy storage systems. Capacity[Ah]: The amount of electric charge the system can deliver to the connected load while maintaining acceptable voltage.



What is a battery energy storage system? BESSs are modular, housed within standard shipping containers, allowing for versatile deployment. When planning the implementation of a Battery Energy Storage System, policy makers face a range of design challenges. This is primarily due to the unique nature of each BESS, which doesn't neatly fit into any established power supply service category.



What time does the energy storage power station operate? During the three time periods of 03:00-08:00, 15:00-17:00, and 21:00-24:00, the loads are supplied by the renewable energy, and the excess renewable energy is stored in the FESPS or/and transferred to the other buses. Table 1. Energy storage power station.

ENERGY STORAGE POWER STATION LAYOUT PICTURES



Can a battery energy storage system be used as a reserve? The BESS project is strategically positioned to act as a reserve, effectively removing the obstacle impeding the augmentation of variable renewable energy capacity. Adapted from this study, this explainer recommends a practical design approach for developing a grid-connected battery energy storage system. Size the BESS correctly.



4,922 battery energy storage system stock photos, vectors, and illustrations are available royalty-free for download. Battery storage power station accompanied by solar and wind turbine power plants. New Energy concept image. Save. Ghost effect of Containerized Battery Energy Storage System. Generic design. 3D rendering image. Save. 3d



The proposed hybrid charging station integrates solar power and battery energy storage to provide uninterrupted power for EVs, reducing reliance on fossil fuels and minimizing grid overload.



With the continuous increase of economic growth and load demand, the contradiction between source and load has gradually intensified, and the energy storage application demand has become increasingly prominent. Based on the installed capacity of the energy storage power station, the optimization design of the series-parallel configuration of each energy storage unit ???



energy storage. The Natrium reactor maintains constant thermal power at all times, maximizing its capacity factor and value. Molten salt energy storage is more resilient, flexible and cost-effective than current grid-scale battery technology. The Natrium plant design is simple and streamlined, making it easier, faster and

ENERGY STORAGE POWER STATION LAYOUT PICTURES



In 2019, ZTT continued to power the energy storage market, participating in the construction of the Changsha Furong 52 MWh energy storage station, Pinggao Group 52.4 MWh energy storage station, and other projects, as well as providing a comprehensive series of energy storage applications such as energy storage for AGC, primary frequency



Electrochemical Power Generation and Energy Storage 23 Power Generation ??? Fuel cells provide primary power to support DC electrical power bus o Use pure to propellant-grade O₂ / H₂ or O₂ / CH₄ reactants o Uncrewed experiment platforms o Crewed/uncrewed rovers o Electric aircraft / Urban Air Mobility (UAM) ??? Applications o Mars/Lunar



4 UTILITY SCALE BATTERY ENERGY STORAGE SYSTEM (BESS)
BESS DESIGN IEC - 4.0 MWH SYSTEM DESIGN This documentation provides a Reference Architecture for power distribution and conversion ??? and energy and assets monitoring ??? for a utility-scale battery energy storage system (BESS). It is intended to be used together with



Finally, seasonal energy storage planning is taken as an example¹ to clarify its role in medium - and long-term power balance, and the results show that although seasonal storage increases the



The Ref. [16] proposes a shared energy storage plant capacity allocation method considering renewable energy consumption by establishing a two-layer planning model, solving the plant configuration by the outer layer model and the renewable energy consumption rate and power grid optimization by the inner layer model, with the lowest operating

ENERGY STORAGE POWER STATION LAYOUT PICTURES



Renewable energy is the fastest-growing energy source in the United States. The amount of renewable energy capacity added to energy systems around the world grew by 50% in 2023, reaching almost 510 gigawatts. In this rapidly evolving landscape, Battery Energy Storage Systems (BESS) have emerged as a pivotal technology, offering a reliable solution for ???



Search from Renewable Energy Storage stock photos, pictures and royalty-free images from iStock. Renewable energy technologies presentation design elements. Data visualization with 5 steps. Modern container hydrogen energy storage power plant system accompanied with solar panels and wind turbine system situated in nature with Mount St



The Pinnapuram integrated renewable energy with storage project (IRESPP) is a 3.6GW hybrid renewable energy project comprising a 2GW photovoltaic (PV) solar farm, a 400MW wind farm, and a 1.2GW pumped storage hydroelectric facility proposed to be developed in the Pinnapuram village, in the Kurnool district of Andhra Pradesh, India.



Large-scale integration of renewable energy in China has had a major impact on the balance of supply and demand in the power system. It is crucial to integrate energy storage devices within wind power and photovoltaic ???



5,098 battery energy storage systems stock photos, vectors, and illustrations are available royalty-free for download. energy storage power battery icons set vector. solar panel, system grid, photovoltaic lithium, electric green, ion, smart, industry energy storage power battery black contour illustrations Battery storage power station

ENERGY STORAGE POWER STATION LAYOUT PICTURES



2.1 Introduction to Safety Standards and Specifications for Electrochemical Energy Storage Power Stations. At present, the safety standards of the electrochemical energy storage system are shown in Table 1 addition, the Ministry of Emergency Management, the National Energy Administration, local governments and the State Grid Corporation have also ???



With the price of lithium battery cell prices having fallen by 97% over the past three decades, and standalone utility-scale storage prices having fallen 13% between 2020 and 2021 alone, demand for energy storage continues to rapidly rise. The increase in extreme weather and power outages also continue to contribute to growing demand for battery energy storage ???



On November 16, Fujian GW-level Ningde Xiapu Energy Storage Power Station (Phase I) of State Grid Times successfully transmitted power. The project is mainly invested by State Grid Integrated Energy and CATL, which is the largest single grid-side standalone station-type electrochemical energy storage power station in China so far. The total



On May 14, 1968, the first PSPS in China was put into operation in Gangnan, Pingshan County, Hebei Province. It is a mixed PSPS. There is a pumped storage unit with the installed capacity of 11 MW. This PSPS uses Gangnan reservoir as the upper reservoir with the total storage capacity of $1.571 \times 10^9 \text{ m}^3$, and uses the daily regulation pond in eastern Gangnan as the lower ???



It is then used as the heated source, similar to a conventional power station. There are a few types of CSP power stations but all use the same principle of heating the working fluid by direct sunlight. The concentrated solar power plant or solar thermal power plant generates heat and electricity by concentrating the sun's energy.

ENERGY STORAGE POWER STATION LAYOUT PICTURES



With the establishment of a large number of clean energy power stations nationwide, there is an urgent need to establish long-duration energy storage stations to absorb the excess electricity



Storage technologies include pumped hydroelectric stations, compressed air energy storage and batteries, each offering different advantages in terms of capacity, speed of deployment and environmental impact. Batteries are perfect for power back-up and energy storage. Of course, those used for grid energy storage are a teensy bit bigger. Tim



The aim of this paper is to Design a CSP plant with molten salt thermal energy storage. A 70 MW CSP plant is designed with parabolic collector. Giaconia A (2011) Life cycle assessment of a high temperature molten salt concentrated solar power plant. Sol Energy 85(5):1101???1108 K., Song, J. (2023). Design of Concentrated Solar Power



Kokam's new ultra-high-power NMC battery technology allows it to put 2.4 MWh of energy storage in a 40-foot container, compared to 1 MWh to 1.5 MWh of energy storage for standard NMC batteries.



The energy industry is a key industry in China. The development of clean energy technologies, which prioritize the transformation of traditional power into clean power, is crucial to minimize peak carbon emissions and achieve carbon neutralization (Zhou et al., 2018, Bie et al., 2020) recent years, the installed capacity of renewable energy resources has been steadily ???

ENERGY STORAGE POWER STATION LAYOUT PICTURES



Power [W]: It's not easy to define the output power for a BESS, as it depends on the load connected. However, nominal power indicates the power during the most representative discharge situation. **Specific Energy [Wh/kg]:** This specifies the amount of energy that the battery can store relative to its mass.



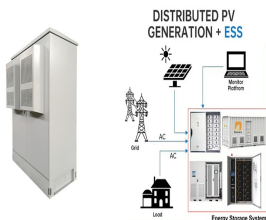
Energy storage systems absorb the excessive energy when generation exceeds predicted levels and supply it back to the grid when generation levels fall short. Electric Storage technologies can be utilized for storing excess power, meeting peak power demands and enhance the efficiency of the country's power system.



Unlike today's Light Water Reactors, the Natrium reactor is a 345-megawatt sodium fast reactor coupled with TerraPower's breakthrough innovation ??? a molten salt energy storage system, providing built-in gigawatt-scale energy storage. This makes the plant a perfect support for high-renewable penetration grids where variable power output is a



Concept of green energy with renewable resources. Isometric 3d layout smart city with fuel cell vehicle, solar panels, wind turbines and hydrogen storage tank Filling station with electric car. front view. Alternative renewable power generation, electricity production, green energy concept. battery storage power station stock pictures



3.7se of Energy Storage Systems for Peak Shaving U 32 3.8se of Energy Storage Systems for Load Leveling U 33 3.9ogrid on Jeju Island, Republic of Korea Micr 34 4.1rice Outlook for Various Energy Storage Systems and Technologies P 35 4.2 Magnified Photos of Fires in Cells, Cell Strings, Modules, and Energy Storage Systems 40