

# ENERGY STORAGE POWER STATION LIST

---



Which energy storage power station successfully transmitted power?  
China's largest single station-type electrochemical energy storage power station Ningde Xiapu energy storage power station(Phase I) successfully transmitted power. China Energy Storage Alliance On November 16,Fujian GW-level Ningde Xiapu Energy Storage Power Station (Phase I) of State Grid Times successfully transmitted power.



What is a battery energy storage system? Battery energy storage systems are generally designed to be able to output at their full rated power for several hours. Battery storage can be used for short-term peak power and ancillary services,such as providing operating reserve and frequency control to minimize the chance of power outages.



What type of energy storage is used in the world? Most of the world's grid energy storage by capacity is in the form of pumped-storage hydroelectricity,which is covered in List of pumped-storage hydroelectric power stations. This article list plants using all other forms of energy storage.



What is a battery storage power plant? Battery storage power plants and uninterruptible power supplies (UPS) are comparable in technology and function. However, battery storage power plants are larger. For safety and security, the actual batteries are housed in their own structures, like warehouses or containers.



How do energy storage plants augment electrical grids? Many individual energy storage plants augment electrical grids by capturing excess electrical energy during periods of low demand and storing it in other forms until needed on an electrical grid. The energy is later converted back to its electrical form and returned to the grid as needed.

# ENERGY STORAGE POWER STATION LIST



What is a battery energy storage system (BESS)? A battery energy storage system (BESS) or battery storage power station is a type of energy storage technology that uses a group of batteries to store electrical energy.



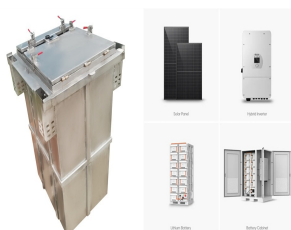
MW Andasol solar power station is a commercial parabolic trough solar thermal power plant, located in Spain. The Andasol plant uses tanks of molten salt to store captured solar energy so that it can continue generating electricity when the sun isn't shining.. This is a list of energy storage power plants worldwide, other than pumped hydro storage. . Many individual energy ???



-Charging power station-Charging power station-Fuel pump-Gasoline-Hydrogen fuel. Energy supply capacity-Limited by battery-Capacity (up to 244.8 MWh). So, it is built for high power energy storage applications [86]. This storage system has many merits like there is no self-discharge, high energy densities (150???300 Wh/L), high



A battery storage power station, also known as an energy storage power station, is a facility that stores electrical energy in batteries for later use. It plays a vital role in the modern power grid ???



We present the list of the biggest concentrated solar power stations worldwide. The solar thermal plants are ranked by electrical capacity. Only the systems with power capacity not less than 50MW are listed. The catalogue includes the projects with and without energy storage, on which a corresponding note is made.

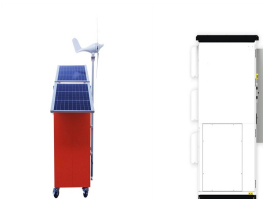
# ENERGY STORAGE POWER STATION LIST



Large-scale integration of renewable energy in China has had a major impact on the balance of supply and demand in the power system. It is crucial to integrate energy storage devices within wind power and photovoltaic ???



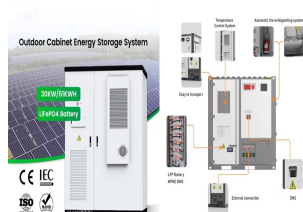
China Central Television (CCTV) recently aired the documentary Cornerstones of a Great Power, which vividly describes CATL's efforts in the technological breakthrough of long-life batteries. The Jinjiang 100 MWh Energy Storage Power Station that appeared in the video is the first application of this technology. Contemporary Amperex Technology Co., Limited ???



Energy storage systems for electricity generation operating in the United States Pumped-storage hydroelectric systems. Pumped-storage hydroelectric (PSH) systems are the oldest and some of the largest (in power and energy capacity) utility-scale ESSs in the United States and most were built in the 1970's. PSH systems in the United States use electricity from electric power grids to ???



About EPRI's Battery Energy Storage System Failure Incident Database. The database compiles information about stationary battery energy storage system (BESS) failure incidents. LG Energy Solution: Solar Integration: Power Plant: 4 September 2021: 0.8: Vistra: Australia, Victoria, Moorabool: 450: 300: Tesla [NMC] Grid Stability: Rural: 30



If you want even more outlets, or if you plan to power one or more devices requiring more than 1,000 W total, get the EcoFlow Delta 1300.. It has more output options???six AC outlets, four USB-A

# ENERGY STORAGE POWER STATION LIST



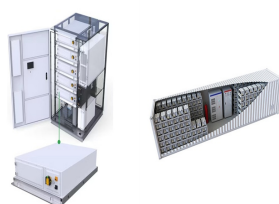
Castaic Power Plant, the largest pumped-storage power station in California. Pumped-storage hydroelectricity is important means of large-scale grid energy storage that helps improve the daily capacity factor of California's electricity generation system. This is a list of all operational pumped-storage power stations in California.



This is a list of energy storage power plants worldwide, other than pumped hydro storage. Many individual energy storage plants augment electrical grids by capturing excess electrical energy ???



A run-of-river hydroelectric power station that is downstream of a large dam takes advantage of storage in that dam to reduce dependence on day-to-day rainfall. then storage energy and power of about 500 TWh and 20 TW will be needed, which is more than an order of magnitude larger than at present, but much smaller than the available off



3 ? Following energisation, the facility in North Yorkshire is the UK's largest transmission connected battery energy storage system (BESS). National Grid's adjacent Drax 400kV substation already hosts the connection for Drax power station ??? the UK's largest biomass facility ??? and will also connect the Eastern Green Link 2 electrical



Battery energy storage (BESS) offer highly efficient and cost-effective energy storage solutions. BESS can be used to balance the electric grid, provide backup power and improve grid stability. From renewable energy producers, conventional thermal power plant operators and grid operators to industrial electricity consumers, and offshore



The MITEI report shows that energy storage makes deep decarbonization of reliable electric power systems affordable. "Fossil fuel power plant operators have traditionally responded to demand for electricity ??? in any given moment ??? by adjusting the supply of electricity flowing into the

# ENERGY STORAGE POWER STATION LIST

---

grid," says MITEI Director Robert Armstrong, the Chevron Professor ???

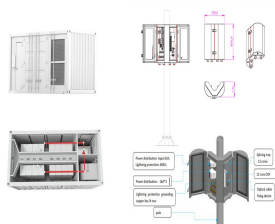
# ENERGY STORAGE POWER STATION LIST



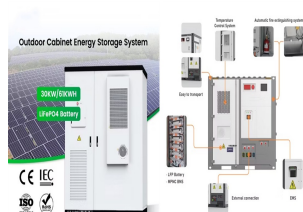
The Bath County Pumped Storage Station has a maximum generation capacity of more than 3 gigawatts (GW) and total storage capacity of 24 gigawatt-hours (GWh), the equivalent to the total, yearly electricity use of about 6000 homes.. Construction began in March 1977 and upon completion in December 1985, the power station had a generating capacity of ???



After solid growth in 2022, battery energy storage investment is expected to hit another record high and exceed USD 35 billion in 2023, based on the existing pipeline of projects and new capacity targets set by governments. power plant retrofits, smart grid measures and other technologies that raise overall flexibility. In liberalised



Storage capacity is the amount of energy extracted from an energy storage device or system; usually measured in joules or kilowatt-hours and their multiples, it may be given in number of hours of electricity production at power plant nameplate capacity; when storage is of primary type (i.e., thermal or pumped-water), output is sourced only with

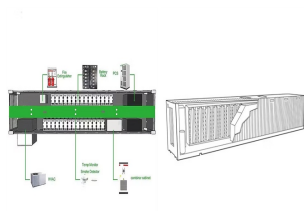


On November 16, Fujian GW-level Ningde Xiapu Energy Storage Power Station (Phase I) of State Grid Times successfully transmitted power. The project is mainly invested by State Grid Integrated Energy and CATL, which is the largest single grid-side standalone station-type electrochemical energy storage power station in China so far.



This list of power stations in Scotland includes current and former electricity-generating power stations in Scotland, sorted by type. The 900???1800 MW Earba Storage is being developed by Gilkes Energy in the Ardverikie Estate to the southwest of Loch Laggan. [35] [36]

# ENERGY STORAGE POWER STATION LIST



Pumped-storage hydroelectricity (PSH), or pumped hydroelectric energy storage (PHES), is a type of hydroelectric energy storage used by electric power systems for load balancing. A PSH system stores energy in the form of gravitational potential energy of water, pumped from a lower elevation reservoir to a higher elevation. Low-cost surplus off-peak electric power is typically ???



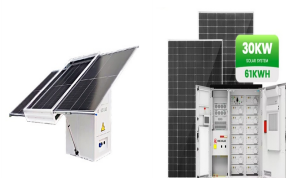
Energy storage involves converting energy from forms that are difficult to store to more conveniently or economically storable forms. Some technologies provide short-term energy storage, while others can endure for much longer. Bulk ???



Please use the filters on sidebar to refine the list based on technology used by the power plant and the status of the project. Corby Battery Energy Storage System Project . Coso Navy 2 / China Lake Joint Venture. Cosumnes Power Plant. Crockett Cogeneration Project. Darden Clean Energy Project.



A concentrated solar power plant with 10 hours molten salt storage  
Andasol Solar Power Station: Thermal storage, molten salt: 1,031: 134.7: 7.5: Spain: Granada, Guadix: 2009: A thermal storage system absorbs part of the daytime heat absorbed by the solar field, heating a molten salt mixture of 60% sodium nitrate and 40% potassium nitrate. The



MW Dalian Flow Battery Energy Storage Peak-shaving Power Station, with the largest power and capacity in the world so far, was connected to the grid in Dalian, China, on September 29, and it will be put into operation in mid-October. This energy storage project is supported technically by Prof. LI Xianfeng's group from the Dalian Institute of Chemical Physics (DICP) of ???



# ENERGY STORAGE POWER STATION LIST

---



The Tesla Megapack is a large-scale rechargeable lithium-ion battery stationary energy storage product, intended for use at battery storage power stations, manufactured by Tesla Energy, the energy subsidiary of Tesla, Inc.. Launched in 2019, a Megapack can store up to 3.9 megawatt-hours (MWh) of electricity. Each Megapack is a container of similar size to an intermodal ???



The battery storage facilities, built by Tesla, AES Energy Storage and Greensmith Energy, provide 70 MW of power, enough to power 20,000 houses for four hours. Hornsdale Power Reserve in Southern Australia is the world's largest lithium-ion battery and is used to stabilize the electrical grid with energy it receives from a nearby wind farm.



This project represents China's first grid-level flywheel energy storage frequency regulation power station and is a key project in Shanxi Province, serving as one of the initial pilot demonstration projects for "new energy + energy storage." The station consists of 12 flywheel energy storage arrays composed of 120 flywheel energy storage units