

# ENERGY STORAGE POWER STATION MANAGEMENT DEPARTMENT



What are battery storage power stations? Battery storage power stations are usually composed of batteries, power conversion systems (inverters), control systems and monitoring equipment. There are a variety of battery types used, including lithium-ion, lead-acid, flow cell batteries, and others, depending on factors such as energy density, cycle life, and cost.



What is the application of energy storage in power grid frequency regulation services? The application of energy storage in power grid frequency regulation services is close to commercial operation. In recent years, electrochemical energy storage has developed quickly and its scale has grown rapidly. Battery energy storage is widely used in power generation, transmission, distribution and utilization of power system.



Do electrochemical energy storage stations need a safety management system? Therefore, it is necessary to establish a complete set of safety management system of electrochemical energy storage station.



What is battery energy storage? Battery energy storage is widely used in power generation, transmission, distribution and utilization of power system. In recent years, the use of large-scale energy storage power supply to participate in power grid frequency regulation has been widely concerned.



Why do battery storage power stations need a data collection system? Battery storage power stations require complete functions to ensure efficient operation and management. First, they need strong data collection capabilities to collect important information such as voltage, current, temperature, SOC, etc.

# ENERGY STORAGE POWER STATION MANAGEMENT DEPARTMENT



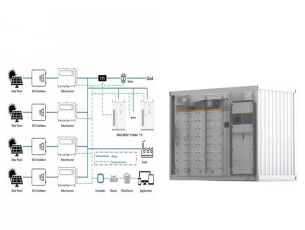
Can large-scale energy storage power supply participate in power grid frequency regulation? In recent years, the use of large-scale energy storage power supply to participate in power grid frequency regulation has been widely concerned. The charge and discharge cycle of frequency regulation is in the order of seconds to minutes. The state of charge of each battery pack in BESS is affected by the manufacturing process.



The energy industry is a key industry in China. The development of clean energy technologies, which prioritize the transformation of traditional power into clean power, is crucial ???



China is currently in the early stage of commercializing energy storage. As of 2017, the cumulative installed capacity of energy storage in China was 28.9 GW [5], accounting for ???



In the quest for a resilient and efficient power grid, Battery Energy Storage Systems (BESS) have emerged as a transformative solution. As we navigate the complexities of modern energy management, the integration of ???



Between 2010 and 2019, he acted as a senior electrochemical energy storage system engineer with State Grid Electric Power Research Institute, where he was involved with the development of energy storage ???

# ENERGY STORAGE POWER STATION MANAGEMENT DEPARTMENT

---



In the "Guidance on New Energy Storage", energy storage on the power side emphasizes the layout of system-friendly new energy power station projects, the planning and construction of large-scale clean energy bases for ???



Due to the dual characteristics of source and load, the energy storage is often used as a flexible and controllable resource, which is widely used in power system frequency ???



Two different converters and energy storage systems are combined, and the two types of energy storage power stations are connected at a single point through a large number ???



A battery storage power station, also known as an energy storage power station, is a facility that stores electrical energy in batteries for later use. It plays a vital role in the modern ???