

ENERGY STORAGE POWER STATION SYSTEM ENGINEERING



Your comprehensive guide to battery energy storage system (BESS). Learn what BESS is, how it works, the advantages and more with this in-depth post. Engineering & Build; Project Management; Power Plant Commissioning; BESS solutions can accelerate decentralised power station infrastructure which can add value to commercial and utility



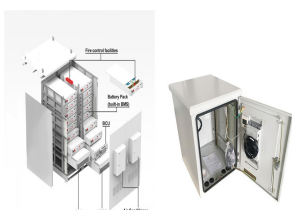
The energy storage revenue has a significant impact on the operation of new energy stations. In this paper, an optimization method for energy storage is proposed to solve the energy storage configuration problem in new energy stations throughout battery entire life cycle. At first, the revenue model and cost model of the energy storage system are established ???



Battery Energy Storage Systems, or BESS, are rechargeable batteries that can store energy from different sources and discharge it when needed. From renewable energy producers, conventional thermal power plant operators and grid operators to industrial electricity consumers, and offshore drilling platforms or vessels, BESS offer highly



The International Renewable Energy Agency predicts that with current national policies, targets and energy plans, global renewable energy shares are expected to reach 36% and 3400 GWh of stationary energy storage by 2050. However, IRENA Energy Transformation Scenario forecasts that these targets should be at 61% and 9000 GWh to achieve net zero ???



The conventional simplified model of constant power cannot effectively verify the application effect of energy storage. In this paper, from the perspective of energy storage system level control, a general simulation model of battery energy storage suitable for integrated optical storage operation control is established. The model can reflect the external characteristics of large ???

ENERGY STORAGE POWER STATION SYSTEM ENGINEERING



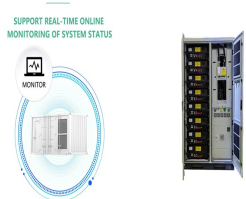
As a national pilot demonstration project for new energy storage, the station utilizes the self-developed CAES system by China Energy Engineering Corporation Limited (CEEC). The world's first 300-megawatt compressed air energy storage (CAES) station utilizes the self-developed CAES system by China Energy Engineering Corporation Limited.



This study presents state-of-the-art pumped energy storage system technology and its AC/DC interface topology, modelling, simulation and control analysis. It also provides information on the existing global capacities, ???



Energy storage systems in modern grids???Matrix of technologies and applications. Omid Palizban, Kimmo Kauhaniemi, in Journal of Energy Storage, 2016. 3.2.2 Pumped hydro storage. Electrical energy may be stored through pumped-storage hydroelectricity, in which large amounts of water are pumped to an upper level, to be reconverted to electrical energy using a ???



Thermal energy storage can be used in industrial processes and power plant systems to increase system flexibility, allowing for a time shift between energy demand and availability 1.



Modelon's energy and power system simulation software enables users to develop energy storage systems, renewable energy integration, control design. Engineering Hydrogen Storage Systems; even a complex energy system, e.g., a process or power plant with several hundred individual components. This is done by dragging, dropping, connecting

ENERGY STORAGE POWER STATION SYSTEM ENGINEERING



Design reliable and efficient energy storage systems with our battery management, sensing and power conversion technologies Battery management system (BMS) Portable power station; Power conversion system (PCS) Engineering efficient energy storage systems Accurate monitoring. Battery monitoring integrated circuits (ICs) measure cell



To achieve these mandates, the state aims to rely heavily on battery energy storage systems to provide backup power when intermittent sources such as solar and wind are insufficient or unavailable. On the Hawaiian island of Oahu, a large and sophisticated battery energy storage system recently came online, marking a key point in the state's



The position of pumped hydro storage systems among other energy storage solutions is clearly demonstrated by the following example. In 2019 in the USA, PHS systems contributed to 93% of the utility-scale storage power capacity and over 99% of the electrical energy storage (with an estimated energy storage capacity of 553 GWh). In contrast, by



The power station, with a 300MW system, is claimed to be the largest compressed air energy storage power station in the world, with highest efficiency and lowest unit cost as well. With a total investment of 1.496 billion yuan (\$206 million), its rated design efficiency is 72.1 percent, meaning that it can achieve continuous discharge for six



This article is the second in a two-part series on BESS ??? Battery energy Storage Systems. Part 1 dealt with the historical origins of battery energy storage in industry use, the technology and system principles behind modern BESS, the applications and use cases for such systems in industry, and presented some important factors to consider at the FEED stage of ???

ENERGY STORAGE POWER STATION SYSTEM ENGINEERING



Figure 2. An example of BESS architecture. Source Handbook on Battery Energy Storage System Figure 3. An example of BESS components - source Handbook for Energy Storage Systems . PV Module and BESS Integration. As described in the first article of this series, renewable energies have been set up to play a major role in the future of electrical



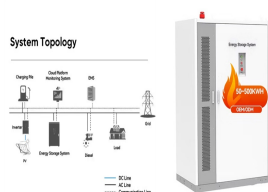
Hybridize your PV plant and get the engineering of the battery energy storage system (BESS). Get its layout and technical documentation in a trice. overhead line type and grid requirements to achieve the highest rated power for your plant while also considering your grid operator, the utility, and the country where it is located



Due to the fluctuating renewable energy sources represented by wind power, it is essential that new type power systems are equipped with sufficient energy storage devices to ensure the stability of high proportion of renewable energy systems [7].As a green, low-carbon, widely used, and abundant source of secondary energy, hydrogen energy, with its high ???



Large scale renewable energy, represented by wind power and photovoltaic power, has brought many problems for the safe and stable operation of power system. Firstly, this paper analyzes the main problems brought by large-scale wind power and photovoltaic power integration into the power system. Secondly, the paper introduces the basic principle and engineering ???



Economic Benefit Analysis of Battery Energy Storage Power Station Based on Application Price System. Authors Electrical Engineering, 2018, 42(03): 81--84. HANG Xiao-juan, TIAN Chun-guang, ZHANG Hao, et al. Economic Evaluation Method of Battery Energy Storage System In Peak Load Shifting [J]. Journal of Solar Energy, 2014, 35(09): 1634

ENERGY STORAGE POWER STATION SYSTEM ENGINEERING



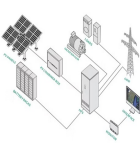
Battery energy storage systems (BESS) are a sub-set of energy storage systems that utilize electrochemical solutions, to transform the stored chemical energy into the needed electric energy. A battery energy storage system is of three main parts; batteries, inverter-based power conversion system (PCS) and a Control unit called battery



The International Renewable Energy Agency predicts that with current national policies, targets and energy plans, global renewable energy shares are expected to reach 36% and 3400 GWh of stationary energy ???



The large variabilities in renewable energy (RE) generation can make it challenging for renewable power systems to provide stable power supplies; however, artificial intelligence (AI)-based



In order to assess the electrical energy storage technologies, the thermo-economy for both capacity-type and power-type energy storage are comprehensively investigated with consideration of political, environmental and social influence. And for the first time, the Exergy Economy Benefit Ratio (EEBR) is proposed with thermo-economic model and applied ???



while balancing the supply and demand, thus securing power system stability. In a way, AS-PSH is a combination of energy storage (storing potential energy) and a conventional power plant. This report covers the electrical systems of PSH plants, including the generator, the power converter, and the grid integration aspects. Future PSH will most

ENERGY STORAGE POWER STATION SYSTEM ENGINEERING



The basic operation principle of a pumped-storage plant is that it converts electrical energy from a grid-interconnected system to hydraulic potential energy (so-called "charging") by pumping the water from a lower reservoir to an upper one during the off-peak periods, and then converts it back ("discharging") by exploiting the available hydraulic potential ???



Relying on the project site of Langli energy storage station, the secondary system architecture of the energy storage station is simplified, the stability of control operation and the fast



Aiming at reducing the risks and improving shortcomings of battery relaytemperature protection and battery balancing level for energy storage power stations, a new high-reliability adaptive equalization battery management technology is proposed, which combines the advantages of active equalization and passive equalization. Firstly, the current common technical solutions ???



3.7se of Energy Storage Systems for Peak Shaving U 32 3.8se of Energy Storage Systems for Load Leveling U 33 3.9ogrid on Jeju Island, Republic of Korea Micr 34 4.1rice Outlook for Various Energy Storage Systems and Technologies P 35 4.2 Magnified Photos of Fires in Cells, Cell Strings, Modules, and Energy Storage Systems 40



This paper studies the configuration and operational model and method of an integrated wind???PV-storage power station, considering the lifespan loss of energy storage. First, we analysed and modelled the various costs and ???