

ENERGY STORAGE RESCUE BOAT DAVIT



How to choose an energy storage source for a rescue boat davit? When it comes to selecting an energy storage source for a rescue boat davit, the accumulator plays a crucial role. An accumulator, also known as a battery or energy storage system, is responsible for providing reliable and efficient power to operate the davit in rescue operations.



Are Viking rescue boat davits suitable for fast rescue boats? Designed to ensure safe and efficient launch and retrieval, our VIKING Norsafe rescue boat davits are suitable for most rescue boats, including fast rescue boats. As a minimum, all rescue boat davits are SOLAS-approved, with options including Fast Rescue Boat Launching Appliances and Norsok R-002.



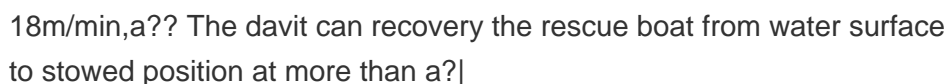
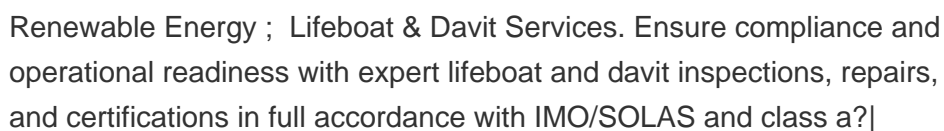
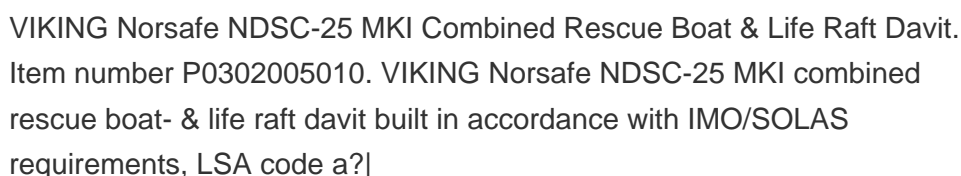
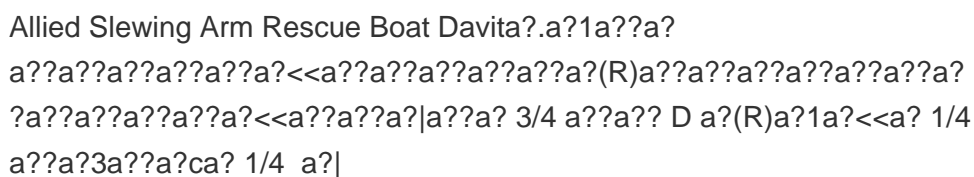
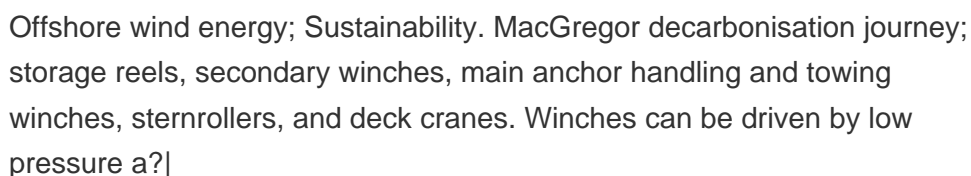
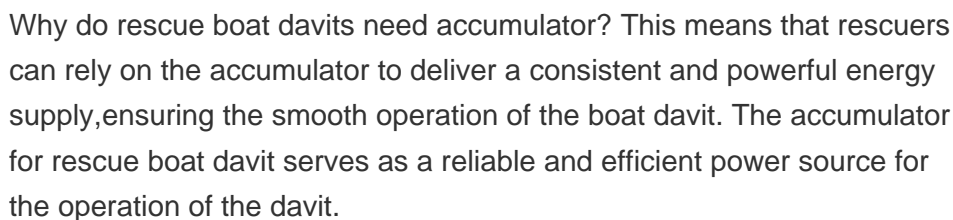
What is the power source for a rescue boat davit? The power source for a rescue boat davit plays a crucial role in ensuring the reliability and efficiency of the system. An accumulator, also known as an energy storage battery, is commonly used as the power source for rescue boat davits. An accumulator serves as a reliable power source for rescue boat davits due to its ability to store energy.



How does a rescue boat davit work? The battery or accumulator is a crucial component in the operation of a rescue boat davit. It provides the necessary energy to power the davit and ensure a safe and efficient operation during rescue missions. The rescue boat davit relies on a reliable power source to ensure that it can be deployed quickly and effectively in emergency situations.



Why does a rescue boat davit need a battery? An efficient battery ensures that the rescue boat davit can operate at its full potential, allowing for quick and reliable deployment of the rescue boat. Moreover, an efficient power source minimizes energy waste and extends the runtime of the rescue boat davit. This is particularly important in emergency situations, where every minute counts.



ENERGY STORAGE RESCUE BOAT DAVIT



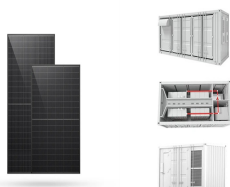
The LSA code have following requirements of it. A launching appliance shall not depend on any means other than gravity or stored mechanical power which is independent of a?)



Some models - MERLIN-615 R and MAKO-655 - are available as both rescue boat and fast rescue boat. We also offer a number of optional features and equipment. Designed to ensure safe and efficient launch and retrieval, our a?)



Designed to ensure efficient launch and retrieval, our VIKING Norsafe rescue boat davits are suitable for most rescue boats, including fast rescue boats. As a minimum, all rescue boat davits are SOLAS-approved, with options including a?)



This video [How to Operate Davit launch Rescue Boat using Accumulator Tank] has been shared from the internet. If you find it inappropriate or wish for it to be removed, kindly contact us, and a?)



The MacGregor A-type davit is a cost-effective alternative for handling of small and medium-sized fast rescue boats, man-overboard boats, workboats and daughter craft. A-type davits are designed to operate with a safe working load a?)



The pivot davit is a freestanding deck mounted system consisting of a base frame, davit arm, cylinders, winch, and hydraulic power pack unit. The system enables safe and efficient launch and recovery of a fully manned rescue boat a?)

ENERGY STORAGE RESCUE BOAT DAVIT



Some models - MERLIN-615 R and MAKO-655 - are available as both rescue boat and fast rescue boat. We also offer a number of optional features and equipment. Designed to ensure efficient launch and retrieval, our VIKING a?|



life boats, rescue boats, life rafts, and other marine use devices including cranes, winches, and pumps. a??a??a??a??a? a?(R)a??a??a?!a? 1/4 a?3a??a?|a??a?3a??a??a??a?3a??a?(R) a??a??a?3a?ua? 1/4 a??a?1a?<a??a?|a??ISO9001a?? a?|



Dear Mr. M.Rossland good day I read your comments about the life boats, is very logical, professional, but the question is, many service engineers, from various countries, the hold certifications from the a?|