

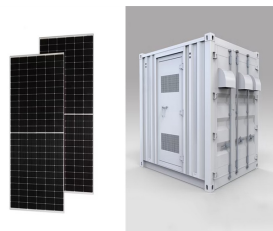
ENERGY STORAGE SAMPLING CIRCUIT BOARD



According to the requirements of high robustness and positive and negative polarity controllability of the sampling circuit for bipolar charging power supply designed for a large capacity energy ???



4. Sampling Control Harness. Providing hardware support for various information acquisition and controller information exchange of the power battery, adding redundant insurance functions on each voltage sampling line, effectively ???



Regardless of the circuit details or type of THA in question, all such devices have four major components. The input buffer amplifier, switching circuit, energy storage device (capacitor), and output buffer are common to all THAs. The ???



A novel Al Cu internal short circuit detection method for lithium-ion batteries based on on-board will present quite different transient characteristics in the ISC processes and ???



X-ray systems from Viscom are used for the inspection of series assemblies as well as sampling and prototype controls. They take care of typical inspection tasks in concealed areas such as void controls, THT filling level ???

ENERGY STORAGE SAMPLING CIRCUIT BOARD



Evaluating the circuits. Connecting a low power, high impedance DC source (such as a PV cell or TEG) to the J4 terminal, and placing SL4 and SL5 in Position A makes use of the ADP5090 energy harvesting circuit as the ???



A battery management system (BMS) ensures performance, safety and longevity of a battery energy storage system in an embedded environment. One important task for a BMS is to estimate the state of



This article talks about 10 parts you use a lot on circuit boards, like resistors, capacitors, diodes, transistors, and ICs. It tells you what they do and why they're important when you design PCBs, so you can make stuff that works good and ???



Battery impedance based state estimation methods receive extensive attention due to its close relation to internal dynamic processes and the mechanism of a battery. In order to provide impedance for a battery management system ???