

ENERGY STORAGE STATIONS REPLACE COAL



How will a new coal power plant work? Power firms will be expected to deliver coal plants that can operate safely while rapidly adjusting power supplies to balance-out renewables generation. Some new plants will be required to run less than 20% of the time, according to the plan, while older generators should have minimum utilization rates of 25% to 40%.



Is China building a coal-fired power plant? China's construction of coal-fired power plants reached nearly a 10-year high in the past year, even as the country also continues a massive expansion of renewable energy installations.



Why is China's electricity grid still dependent on coal? While renewable energy is growing, China's electricity grid is still dependent on coal for backup during times of high demand or when renewable energy production is low, said Tsukerman. Coal plants can be ramped up quickly when needed to ensure grid stability.



Will China allow coal-fired power plants in 2027? The Wujing Power Station in Shanghai. Photographer: Raul Ariano/Bloomberg (Raul Ariano/Bloomberg) China will allow coal-fired power plants to be built through at least 2027, according to new guidelines from the government, which also call on generators to ensure they're able to meet gaps in supply from intermittent renewables.



Should new coal plants be more efficient? New plants must also burn coal more efficiently, and their carbon intensity should fall 10% to 20% from the levels seen in the current fleet. The plan highlights the continued importance the fuel plays in China's energy system, even as President Xi Jinping has called for consumption to begin declining from next year.

ENERGY STORAGE STATIONS REPLACE COAL



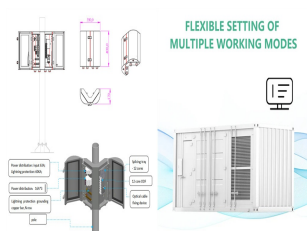
Is coal a reliable source of energy? ??? Coal remains a reliable and affordable source of power to meet this increasing demand, particularly in industrial sectors where renewable energy cannot yet fully replace coal. As one of the world's largest industrial economies, China prioritizes energy security.



Work is set to begin "within weeks" on a large-scale battery energy storage system (BESS) project at the site of a coal power plant in New South Wales, Australia. (20 April) that it has taken the final investment decision in ???



Given that coal provides more than one third of the world's electricity, there is scope for nuclear to over time replace it as a low-carbon primary energy source that provides 24/7 supply security. More than 70 SMR ???



A new kind of thermal storage to meet the reliability requirement. Instead of a liquid, the team would use thermal energy stored in rocks and transferred in hot air, that is equally suited to be dropped in to the nation's ???

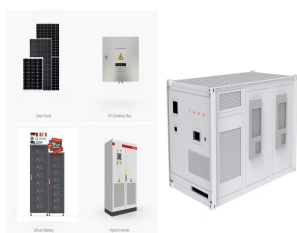


China is speeding up its deployment of batteries and pumped-storage hydropower to provide clean-energy flexibility. However, the former have limited storage capabilities, and the latter involves long construction periods. ???

ENERGY STORAGE STATIONS REPLACE COAL



The E2S Power concept converts existing coal-fired power plants into energy storage facilities by substituting the E2S thermal energy storage system for the boiler and integrating with existing infrastructure, thus ???



However, solar plus storage is not cost-effective enough to replace new coal capacity until at least 2032, in the base case scenario. To overcome coal lock-ins, accelerating the reduction in BESS costs becomes ???



The world is witnessing an energy revolution. As traditional coal plants grow older, we're seeing a rapid increase in the use of renewable energy sources such as wind and solar power. This shift is not just about replacing ???



Those methane-fired generating stations have stepped in to provide on-demand power in place of the outgoing coal generating stations. Now, in a first for the region, Duke ???



Energy Storage Energy Efficiency New Energy Vehicles Energy Economy Climate Change Biomass Energy Mining and Metallurgy . Video Policy & Regulation Exhibition & Forum Organization Belt and Road. Hydrogen. ???

ENERGY STORAGE STATIONS REPLACE COAL



The phase-out of hundreds of GW of coal plants globally is creating an immediate challenge: what should be done with these valuable assets? E2S Power's innovative idea is to replace the boilers with thermal ???



The technologies reviewed cover: closed loop pumped underground hydroelectric storage (PUSH); compressed air storage; thermal heat storage; gravitational energy storage; and hydrogen storage with electrolysis. Mine ???



In 2013 the UK set limits for CO2 emissions at 450g/KWh for all new fossil fuel power plants built after 18th February 2014. This meant that new coal-fired power stations could only be built if they were equipped with ???



Mega-utility Duke Energy is about to knock down a coal plant that has run west of Charlotte, North Carolina, since 1957. Soon the company will build its largest grid battery on that spot, part of an unprecedented energy ???



The "Guiding Opinions on Advancing the Replacement by Electric Energy" has been issued to replace coal and oil with electricity in residential heating, manufacturing, and transport, and to raise the level of electrification ???

ENERGY STORAGE STATIONS REPLACE COAL



China will allow coal-fired power plants to be built through at least 2027, according to new guidelines from the government, which also call on generators to ensure they're able to meet gaps in supply from intermittent ???