

# ENERGY STORAGE SYSTEM HAS LOW FAILURE RATE



What causes low accuracy of battery energy storage system fault warning? The current research of battery energy storage system (BESS) fault is fragmentary, which is one of the reasons for low accuracy of fault warning and diagnosis in monitoring and controlling system of BESS. The paper has summarized the possible faults occurred in BESS, sorted out in the aspects of inducement, mechanism and consequence.



What are stationary energy storage failure incidents? Note that the Stationary Energy Storage Failure Incidents table tracks both utility-scale and C&I system failures. It is instructive to compare the number of failure incidents over time against the deployment of BESS. The graph to the right looks at the failure rate per cumulative deployed capacity, up to 12/31/2023.



What are the different types of energy storage failure incidents? Stationary Energy Storage Failure Incidents ??? this table tracks utility-scale and commercial and industrial (C&I) failures. Other Storage Failure Incidents ??? this table tracks incidents that do not fit the criteria for the first table. This could include failures involving the manufacturing, transportation, storage, and recycling of energy storage.



Are there faults in battery energy storage system? We review the possible faults occurred in battery energy storage system. The current research of battery energy storage system (BESS) fault is fragmentary, which is one of the reasons for low accuracy of fault warning and diagnosis in monitoring and controlling system of BESS.



What are other storage failure incidents? Other Storage Failure Incidents ??? this table tracks incidents that do not fit the criteria for the first table. This could include failures involving the manufacturing, transportation, storage, and recycling of energy storage. Residential energy storage system failures are not currently tracked.

# ENERGY STORAGE SYSTEM HAS LOW FAILURE RATE



How do we know if energy storage power station failure is real? The operation data of actual energy storage power station failure is also very few. For levels above the battery pack, only possible fault information can be obtained from the product description of system devices. The extraction of the mapping relationship from symptoms to mechanisms and causes of failure is incomplete.



An evaluation of potential energy storage system failure modes and the safety-related consequences attributed to the failures is good practice and a requirement when industry standards are being followed. It was established above that several national and international codes and standards require that a hazard mitigation analysis (HMA) is

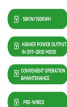


Domestic Battery Energy Storage Systems 7 ??? Internal cell faults, though rare, do occur. For well-constructed 18650 cells, the failure rate from an internal event is estimated as one in ten million (0.1ppm). This translates to a single cell failure in every 10,000 BESS (assuming a 5kWh BESS containing 500 18650 cells).



Energy storage systems (ESS) are critical to a clean and efficient electric grid, storing clean energy and enabling its use when it is needed.

Installation is accelerating rapidly???as of Q3 2023, there was seven times more utility-scale energy storage capacity operating than at the end of 2020. FACTS: Cell failure rates are extremely low



The rate of failure incidents fell 97% between 2018 and 2023, with a chart in the study showing that it went from around 9.2 failures per GW of battery energy storage systems (BESS) deployed in 2018 to around 0.2 in 2023. EVLO's battery energy storage system (BESS) solution has been recertified for the UL9540 standard ahead of deployments

# ENERGY STORAGE SYSTEM HAS LOW FAILURE RATE



Lithium-ion battery energy storage systems have achieved rapid development and are a key part of the achievement of renewable energy transition and the 2030 "Carbon Peak" strategy of China. However, due to the complexity of this electrochemical equipment, the large-scale use of lithium-ion batteries brings severe challenges to the safety of the energy storage ???



A battery energy storage system (BESS) captures energy from renewable and non-renewable sources and stores it in rechargeable batteries (storage devices) for later use. A battery is a Direct Current (DC) device and when needed, the ???



The alarming rate of BESS failures in South Korea from 2018 to 2019 prompted a formal government investigation and a partial suspension of the country's energy storage facilities. Failure of the protection systems to function during electrical surges led to explosions in some cases. The operational environment may have been prone to



The database compiles information about stationary battery energy storage system (BESS) failure incidents. There are two tables in this database: Stationary Energy Storage Failure Incidents ??? this table tracks utility-scale and ???



The International Renewable Energy Agency predicts that with current national policies, targets and energy plans, global renewable energy shares are expected to reach 36% and 3400 GWh of stationary energy ???

# ENERGY STORAGE SYSTEM HAS LOW FAILURE RATE



Download scientific diagram | Effect of different failure rates in the energy storage system on the CVES values. from publication: Energy Storage System Sizing Based on a Reliability Assessment of



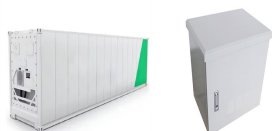
While many papers compare different ESS technologies, only a few research [152], [153] studies design and control flywheel-based hybrid energy storage systems. Recently, Zhang et al. [154] present a hybrid energy storage system based on compressed air energy storage and FESS. The system is designed to mitigate wind power fluctuations and



When the flywheel is weighed up against conventional energy storage systems, it has many advantages, which include high power, availability of output directly in mechanical form, fewer environmental problems, and higher efficiency. High self-discharge rate and low energy density [50,51] Table 2. High failure rates so rarely used



The current research of battery energy storage system (BESS) fault is fragmentary, which is one of the reasons for low accuracy of fault warning and diagnosis in monitoring and controlling system of BESS. The paper has summarized the possible faults occurred in BESS, sorted out in the aspects of inducement, mechanism and consequence.



EPRI's battery energy storage system database has tracked over 50 utility-scale battery failures, most of which occurred in the last four years. One fire resulted in life-threatening injuries to first responders. These incidents represent a 1 to 2 percent failure rate across the 12.5 GWh of lithium-ion battery energy storage worldwide.

# ENERGY STORAGE SYSTEM HAS LOW FAILURE RATE



The capital cost of an energy storage system has two components: an energy cost (\$ GWh ???1) and a power cost (\$ GW ???1). Sometimes these components are conflated into a single number (e.g. \$ GW ???1) by using a fixed storage time such as 6 h. This can sometimes be useful when comparing similar systems but is misleading when comparing



The global installed capacity of utility-scale battery energy storage systems (BESS) has dramatically increased over the last five years. While recent fires afflicting 2023, the global grid-scale BESS failure rate has dropped 97%. The battery industry continues to engage in R&D activities to improve prevention and mitigation



The failure rate of photovoltaic system connected has been estimated based on [19], calculating the resulting failure rate based on each element of the PV installation element. For the calculation



failure incidents involving BESS installations worldwide since 2011.8 The alarming rate of BESS failures in South Korea from 2018 to 2019 prompted a formal government investigation and a partial suspension of the country's energy storage facilities.9 Failure of the protection systems to function during electrical surges led to explosions in



About EPRI's Battery Energy Storage System Failure Incident Database. The database compiles information about stationary battery energy storage system (BESS) failure incidents. There are two tables in this database: The graph to the right looks at the failure rate per cumulative deployed capacity, up to 12/31/2023. The global installed

# ENERGY STORAGE SYSTEM HAS LOW FAILURE RATE



??? High self-discharge rate and low energy density [29] [47] Ceramics 200???2000 High failure rates so rarely The ???ywheel in comparison to other typical energy storage systems has a lot



It reduces 6.7% in the solar array area, 35% in mass, and 55% by volume. 105 For small satellites, the concept of an energy-momentum control system from end to end has been shown, which is based on FESS that uses high-temperature superconductor (HTS) magnetic bearing system. 106 Several authors have investigated energy storage and attitude control system for ???



It might have an energy storage capacity of about 100 kWh and can discharge energy at a rate of 1 MW. If this system is discharging energy at its maximum rate of 1 MW, it would take about 6 minutes to use up all the stored energy.



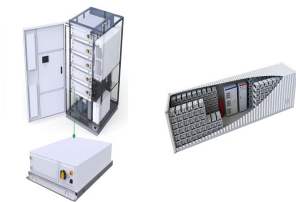
Conventional energy storage systems, such as pumped hydroelectric storage, lead???acid batteries, and compressed air energy storage (CAES), have been widely used for energy storage. However, these systems face significant limitations, including geographic constraints, high construction costs, low energy efficiency, and environmental challenges. ???



Consequently, frequency stability is affected and deviates beyond allowable permissible limits leading to power blackouts, load shedding, and even total system failure. To address the issues associated with reduced inertia, an optimal control of hybrid energy storage system (HESS) has been proposed.



# ENERGY STORAGE SYSTEM HAS LOW FAILURE RATE

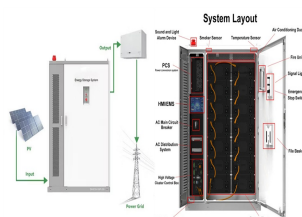


## CARNEGIE ROAD ENERGY STORAGE SYSTEM FAILURE RESPONSE, RECOVERY, AND REBUILD LESSONS LEARNED

15243217. Power Delivery & Utilization White Paper 2 April 2023 Useable Energy Capacity 11.25 MWh 33 kV AC at 20 MW rate at BOL. Includes DC/AC losses up to the point of interconnection (POI). Nameplate Power Capability 20 MW At 33 kV AC, ???



renewable energy sources. The value of energy storage systems (ESS) to provide fast frequency response has been more and more recognized. Although the development of energy storage technologies has made ESSs technically feasible to be integrated in larger scale with required performance, the policies, grid codes



The International Renewable Energy Agency predicts that with current national policies, targets and energy plans, global renewable energy shares are expected to reach 36% and 3400 GWh of



Battery energy storage systems are generally designed to be able to output at their full rated power for several hours. They generally have high energy density and low self-discharge. [18] despite the large increase in number and size of BESS. Thus failure rate has decreased. Failures occurred mostly in controls and balance of system



On April 9, CATL unveiled TENER, the world's first mass-producible energy storage system with zero degradation in the first five years of use. Featuring all-round safety, five-year zero degradation and a robust 6.25 MWh capacity, TENER will accelerate large-scale adoption of new energy storage technologies as well as the high-quality advancement of the ???

# ENERGY STORAGE SYSTEM HAS LOW FAILURE RATE

---



1. Introduction. In order to mitigate the current global energy demand and environmental challenges associated with the use of fossil fuels, there is a need for better energy alternatives and robust energy storage systems that will accelerate decarbonization journey and reduce greenhouse gas emissions and inspire energy independence in the future.