

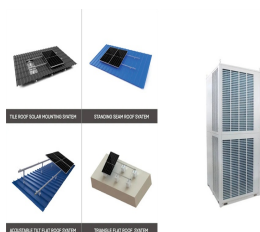
ENERGY STORAGE SYSTEM INTEGRATED DESIGN



The integration of an energy storage system into an integrated energy system (IES) enhances renewable energy penetration while catering to diverse energy loads. In previous studies, the adoption of a battery energy storage (BES) system posed challenges related to installation capacity and capacity loss, impacting the technical and economic performance of ???



The move towards achieving carbon neutrality has sparked interest in combining multiple energy sources to promote renewable penetration. This paper presents a proposition for a hybrid energy system that integrates solar, wind, electrolyzer, hydrogen storage, Proton Exchange Membrane Fuel Cell (PEMFC) and thermal storage to meet the electrical ???



In this paper, an integrated reconfigurable battery energy storage system is proposed to mitigate these deficiencies. The main advantage of the proposed method is that it can be reconfigured ???



The applications of energy storage systems have been reviewed in the last section of this paper including general applications, energy utility applications, renewable energy utilization, buildings and communities, and transportation. Design micro grid system with SMES integrated system of capacity 1.2 MW for a micro grid system [65] Reduce



6 UTILITY SCALE BATTERY ENERGY STORAGE SYSTEM (BESS)
BESS DESIGN IEC - 4.0 MWH SYSTEM DESIGN Battery storage systems are emerging as one of the potential solutions to increase power system flexibility in the presence of variable energy resources, such as solar and wind, due to their unique ability to absorb quickly, hold and then

ENERGY STORAGE SYSTEM INTEGRATED DESIGN



Battery Energy Storage System Design. Designing a BESS involves careful consideration of various factors to ensure it meets the specific needs of the application while operating safely and efficiently. The first step in BESS design is to clearly define the system requirements: 1. Energy Storage Capacity: How much battery energy needs to be



Hybrid thermal energy storage system integrated into thermal power plant is proposed. The design procedure of integrated systems considering the coordination of hybrid heat sources is determined. (3) The influence of system key parameters on the performances of the TES system and the highest round-trip efficiency of the integration system



The paper presents a new innovation in small scale thermal energy storage system suitable for cooking application. A single tank thermal energy storage system integrated with a cooking unit has been developed and the performance analysed. The system consists of a heat storage tank, a heating chamber referred to as a funnel, and the cooking unit.



In order to design integrated energy systems to generate multiple useful outputs, the steps are presented in Fig. 8.12. The source is very critical in order to design the integrated energy systems. Combining the nuclear energy system with a storage option brings additional flexibility to the system in order to meet peak and charge during



Five experts were involved in evaluating the possibility distribution of BESS basic events (BEs) in three different operating environments. These experts come from various fields such as electrochemical mechanism research of lithium-ion battery energy storage systems, system integration design, and energy storage safety and fire research.

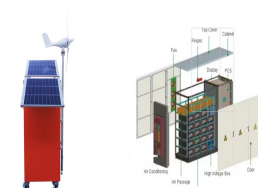
ENERGY STORAGE SYSTEM INTEGRATED DESIGN



In tandem, generalization aims to understand the requirements and impacts of scaling up technologies (such as wind co-design with storage systems) from local test beds through regional, national, and international perspectives and settings. large-scale underground compressed air energy storage integrated with wind farms was projected to



For this reason, innovative solutions should be investigated for making such storage systems competitive with other storage technologies. An alternative PTES configuration was proposed by Benato [16], in which an electrical heater is included after the compressor to convert electrical energy into thermal energy, aiming to make the maximum cycle temperature ???



The integrated system of energy conversion and storage devices is of great significance to the development of next-generation power system since the integrated system can solve some defects of the individual energy conversion or storage device unit.



U.S. Department of Energy's (DOE) "Thermal Energy Storage Systems for Buildings Workshop: Priorities and Pathways to Widespread Deployment of Thermal Energy Storage in Buildings" was hosted virtually on May 11 and 12, 2021. This report provides an overview of the workshop proceedings.



The grid-connected PV system with battery storage enables efficient solar energy utilisation, enhances stability, provides backup power during outages, and promotes cost savings for ???

ENERGY STORAGE SYSTEM INTEGRATED DESIGN



PDF | This book thoroughly investigates the pivotal role of Energy Storage Systems (ESS) in contemporary energy management and sustainability efforts. | Find, read and cite all the research you



One promising solution is integrated renewable energy systems (IRES), which offer low-emission energy supply systems and proximity to end consumers. energy storage, system design, and system optimization have been conducted by numerous researchers. While IRES presents a significant solution for meeting future energy development needs, its



This paper presents a unique concept design for a 1 kW-h inside-out integrated flywheel energy storage system. The flywheel operates at a nominal speed of 40,000 rpm. This design can potentially



1. The new standard AS/NZS5139 introduces the terms "battery system" and "Battery Energy Storage System (BESS)". Traditionally the term "batteries" describe energy storage devices that produce dc power/energy. However, in recent years some of the energy storage devices available on the market include other integral



The penetration of renewable energy sources into the main electrical grid has dramatically increased in the last two decades. Fluctuations in electricity generation due to the stochastic nature of solar and wind power, together with the need for higher efficiency in the electrical system, make the use of energy storage systems increasingly necessary.

ENERGY STORAGE SYSTEM INTEGRATED DESIGN



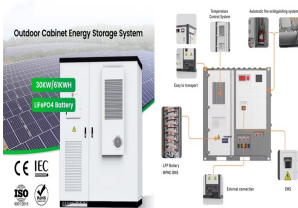
The reconfigurable battery energy storage system (RBESS) is a novel energy storage system, typically consisting of three main components: reconfigurable batteries, converters, and controllers. The reconfigurable battery serves as the primary energy storage unit, capable of dynamically reconfiguring based on load profiles and unit states in real



Scope: This document provides alternative approaches and practices for design, operation, maintenance, integration, and interoperability, including distributed resources interconnection of stationary or mobile battery energy storage systems (BESS) with the electric power system(s) (EPS)¹ at customer facilities, at electricity distribution facilities, or at bulk ???



1 INTRODUCTION. Buildings contribute to 32% of the total global final energy consumption and 19% of all global greenhouse gas (GHG) emissions. 1 Most of this energy use and GHG emissions are related to the operation of heating and cooling systems, 2 which play a vital role in buildings as they maintain a satisfactory indoor climate for the occupants. One way ???



As shown in Fig. 1, this study aims to explore an optimum energy management strategy for the PV-BES system for a real low-energy building in Shenzhen, as the existing management strategy (see Case 1) cannot make full use of the energy conversion and storage system. The PV energy utilization is low with a high system cost because surplus PV power is ???



The framework for categorizing BESS integrations in this section is illustrated in Fig. 6 and the applications of energy storage integration are summarized in Table 2, including standalone battery energy storage system (SBESS), integrated energy storage system (IESS), aggregated battery energy storage system (ABESS), and virtual energy storage

ENERGY STORAGE SYSTEM INTEGRATED DESIGN



In this paper, a liquid carbon dioxide energy storage system integrated with the low-grade heat source is proposed. Based on the preliminary geometric parameters of system components, investigations on the system design and off-design performances are carried out. Results of parametric analysis indicate that the pseudo-critical point