

# ENPHASE IQ8 OFF GRID SYSTEM DOMINICA



Why should you choose Enphase Energy System for off-grid living? Embrace the freedom of off-grid living with the power and reliability of the Enphase Energy System. Offering complete independence from utility infrastructure, our new Off-Grid configurations feature intelligent IQ8 Microinverters, state-of-the-art IQ Batteries, and integrated Generator Support.



Does the Enphase IQ8 work in off-grid mode? One of the most commonly-asked questions about the Enphase battery is whether it can function in off-grid mode ??? and the answer is yes, it does. The Enphase IQ8 can be paired with a compatible off-grid micro-inverter to create a dependable source of power at all times.



Can the Enphase IQ8 be paired with an off-grid micro-inverter? The Enphase IQ8 can be paired with a compatible off-grid micro-inverter to create a dependable source of power at all times. The Enphase IQ8 features the brand's ???always-on??? technology, aiming to eliminate the challenges of being tied to the utility grid.



What is Enphase IQ8? The Enphase IQ8 features the brand's ???always-on??? technology, aiming to eliminate the challenges of being tied to the utility grid. With a traditional grid-tied system, you ???ll have zero solar power production even if the sun is shining if the grid fails.



Does the Enphase Energy System provide all-day backup? In this configuration, the Enphase Energy System provides all-day backup using IQ8 Series Microinverters and IQ Batteries. The system must have at least 10 kWh of IQ Batteries installed. Depending on the IQ Battery sizing, the system will be able to sustain off-grid operation for extended periods of time.

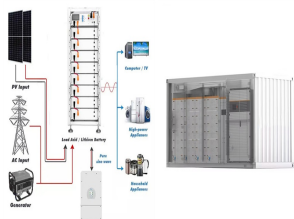
# ENPHASE IQ8 OFF GRID SYSTEM DOMINICA



Can Enphase battery be used off-grid? 1. Can Enphase Battery Be Used Off Grid? Yes, the Enphase battery can function in off-grid mode when paired with a compatible off-grid micro-inverter, allowing for a reliable power source at all times. 2.



??? The battery CT must be installed on the L2 conductor of the battery circuit for all systems. ??? All new standalone or off-grid systems must install an AC standby generator to support the system when needed. ??? All new standalone or off-grid systems must use IQ8 Series Microinverters to facilitate Sunlight



??? Enphase System Shutdown Switch is required by code for remote rapid shutdown of IQ8-based Enphase Energy Systems. Turning the switch to the OFF position connects your home from the utility grid and disables the backup capability of the Enphase Energy System. When the switch is in the OFF position, your home is disconnected from the IQ8



Discover if the Enphase battery can be used off-grid and explore its features for reliable solar power. The Enphase IQ8 can be paired with a compatible off-grid micro-inverter to create a dependable source of power at all times. If you want to invest in a genuinely grid-independent solar system, Enphase has created the Ensemble suite to



As Pramod MJ (Moderator) pointed out some Enphase Energy System Configurations (scroll down) can operate temporarily in an off-grid and off-internet mode but inherently and most all of the time they are a grid and internet tied ???



<p>My original system, installed one year ago, is grid tie, uses two strings iq7a inverters with a envoy 3 combiner box and a encharge 10 battery. </p><p>What would the process be to add two additional strings using iq8 inverters. To get full functionality whole house back up and solar back

# ENPHASE IQ8 OFF GRID SYSTEM DOMINICA

---

up.

Here's a long version. I had a system designed to add iq7a inverters the ???

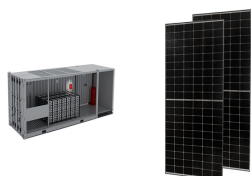
# ENPHASE IQ8 OFF GRID SYSTEM DOMINICA



IQ System Controller 2 of 3: Gebruik een IQ System Controller 2 of 3 om het volledige off-grid systeem te beheren en te monitoren. Deze geavanceerde controllers zorgen voor een naadloze samenwerking tussen de zonnepanelen, micro-omvormers, batterijen, load controllers en de Communications Kit, waardoor je maximale controle en efficiëntie hebt.



Enphase Off-Grid Capabilities. One of the most commonly-asked questions about the Enphase battery is whether it can function in off-grid mode ??? and the answer is yes, it does. The Enphase IQ8 can be paired with a ???



However, Please note that Enphase Energy recommends IQ8+ microinverters to be used as a backup for a on grid system and not a complete off grid system, the system comissioning needs to be done using grid power. However initiation can be done using a generator/grid power( most preferable if available) for the scenario provided.



However, if you do replace the IQ7+ micros, you would be replacing non-microgrid-forming micros with microgrid-forming micros. IQ8 PV is going to be a game changer for Enphase customers and the solar energy industry in general. IQ8 PV will be the world's first microgrid-capable solar PV system. Of course, to have a little storage would be



The Enphase Energy System, with IQ8 Series Microinverters, enables many configurations for different customer needs. The system supports four use cases that are described as the system will be able to sustain off-grid operation for extended periods. This use case supports whole home backup i.e., backing up all the loads in the home. Note



Grid Forming IQ-8 System. Articles. No articles found. Loading. Can the Envoy be powered by the dedicated breaker in the Combiner 4 on an IQ8 system if you are not setting up a grid forming system? Or does it h  
Installer resources Snider\_6002 July 22, 2022 at 2:22 PM. Number

# ENPHASE IQ8 OFF GRID SYSTEM DOMINICA

---

Enphase Energy System; Enphase App; Microinverters

# ENPHASE IQ8 OFF GRID SYSTEM DOMINICA



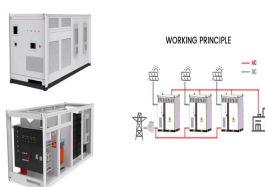
I've recently expanded my off-grid AC & DC coupled hybrid system (Schneider SW4024, Conext MPPT 60-150 (2), AC - 3kw Enphase M215/REC panels, DC - 3kw Renesola panels: 6kw total AC & DC, 20kwh Lifepo4) to include an Enphase Envoy (model R used from Ebay). The system is working well and the Envoy is reporting all the usual information.



As Pramod MJ (Moderator) pointed out some Enphase Energy System Configurations (scroll down) can operate temporarily in an off-grid and off-internet mode but inherently and most all of the time they are a grid and internet tied systems. Additionally, the IQ8 is but a single microinverter choice of many and in itself is not a system. So, If

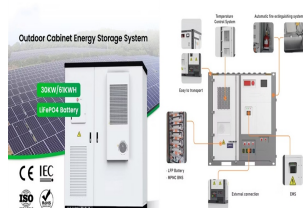


This chip is built in advanced 55 nm technology with high-speed digital logic and has superfast response times to changing loads and grid events, alleviating constraints on battery sizing for home energy systems. Part of the Enphase Energy System, IQ8 Series Microinverters integrate with the IQ Battery, IQ Gateway, and the Enphase App



I purchased iq8 micro inverters and no battery with the intention of going off grid during day time hours in the event of a power outage. In the event of a power outage, to go off grid do I have to push/pull anything? Does it immediately go automatically, or is there a waiting period?

we recently had an outage and power remained out in my house???. It could have ???



microinverter to operate in grid-tied or off-grid modes. This chip is built in advanced 55-nm technology with high-speed digital logic and has superfast response times to changing loads and grid events, alleviating constraints on battery sizing for home energy systems. Part of the Enphase Energy System, IQ8 Series

# ENPHASE IQ8 OFF GRID SYSTEM DOMINICA



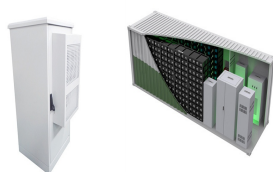
<p>Power has been off for 2 hours. I have an array with IQ8 inverters, no battery. I took my system off grid through the Enphase app to supply power to my branches through the PV array directly. Will there be any problems when the grid comes back on? I understand that I will need to switch my system back to the grid but I'm trying to avoid islanding. As I understand Enphase ???



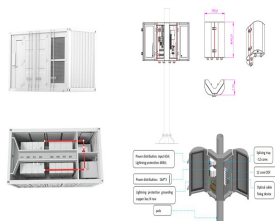
grid-tied PV system design guide . television reception, which can be determined by turning the equipment off and on, you are Enphase IQ8 Commercial Microinverters require the QD Cable and are NOT compatible with previous Enphase cabling (that is, IQ Cables). A three-phase IQ Gateway Commercial 2 is



Here is a IQ7 BACK-UP Congifuration for off grid if i good understand. Also You can ADD IQ Battery 3T or 10T and IQ Load Controler and IQ System Controler 2 (only 2 not 1) and You will be ready to go ;) Unfortunetly IQ Battery 3T its quiet expensive and it have inside IQ8 inverters with limited power 1,28kW.



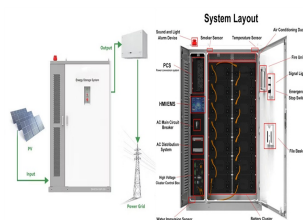
However, if you do replace the IQ7+ micros, you would be replacing non-microgrid-forming micros with microgrid-forming micros. IQ8 PV is going to be a game changer for Enphase customers and the solar energy industry in ???



<p>I am looking at a very large system. If I have no battery, and full sun situation, how much power can I use if I have a 67 panel (440W each) system, presuming the grid is down, and sun is full? Am I restricted to a 2x10A SP subpanel? If this is true, I am sorely disappointed, and I may need to reconsider moving forward. I need to be able to use more of the potential of my ???



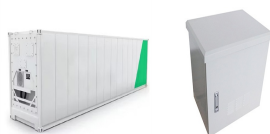
# ENPHASE IQ8 OFF GRID SYSTEM DOMINICA



I am very close to starting an install of a large 67 panel system with IQ8 inverters + a single 10kW battery. I'm having a difficult time finding an acceptable "backup" scenario that will suit my needs. This is a very expensive system, and all I can seem to get from my installer is a 2x 10A Single Pole subpanel with this system. I love the idea of being able to run off-grid, however, ???



Enphase micros are not capable of working completely off-grid. However, with the latest IQ8 micros, they can still produce energy in the case of Grid outages with the help of a sunlight backup system. You can read more about the Sunlight backup here.



This chip is built in advanced 55 nm technology with high-speed digital logic and has super-fast response times to changing loads and grid events, alleviating constraints on battery sizing for home energy systems. Part of the Enphase Energy System, IQ8+ Microinverters integrate with the Enphase IQ Battery, Enphase IQ Gateway, and the Enphase



For example if you have 15 modules with IQ7As and one IQ10 battery, your PV power will be limited to 3.84kw (IQ10 output power) when operating off-grid instead of 5.49kw which is the max PV output power (15 x 366w) in normal on-grid operation.



The Enpower smart switch connects the home to grid power, Encharge Storage, and solar PV. It automatically detects an outage and helps IQ8 form a micro-grid. So, microgrid interconnection device (MID) functionality takes place seamlessly transitioning the home energy system from grid power to backup power in the event of a grid failure.