

ENTERPRISE POWER STORAGE DISPLAY MOVEMENT



a single data center or across distributed enterprise environments. ???
The Dell Storage SCv2000 Series is a feature-rich, entry-level storage array in the Storage Center family of products that offers a compelling blend of high-performance and high-quality data storage at an affordable price.¹ The SCv2000 Series offers single or



The legacy enterprise storage upgrade cycle is familiar to most storage administrators. An enterprise Even if a business is not outgrowing the performance of its storage, media density, power significantly minimizing the disruption associated with the data movement required when replacement systems are deployed. IDC refers to this



Startup Vast Data captures gold in the enterprise storage arrays category of the "Storage" magazine and SearchStorage 2019 Products of the Year competition. Computational storage vendor NGD Systems picks up silver, and DataDirect Networks wins bronze with an AI-optimized product.



ie, the output should be like - plant, storage location and material and then key figures like valuated stock, valuated stock value, last movement, last receipt, last GI. (Currently it is either plant, storage location and key figures or material and key figures, but not plant, storage location and material together with key figures) Thanks



Storage uses a significant fraction of the power budget and there are no widely deployed power-saving solutions for enterprise storage systems. The traditional view is that enterprise workloads make spinning disks down ineffective because idle periods are too short.

ENTERPRISE POWER STORAGE DISPLAY MOVEMENT



In enterprise data centers power usage is a problem impacting server density and the total cost of ownership. Storage uses a significant fraction of the power budget and there are no widely



The Azure Storage Data Movement Library version 0.5.0 has been released and includes these improvements: Support for increased blob sizes, up to 4.77 TB. Please read General Availability: Larger Block Blobs on the Azure Storage blog to learn more.



Automation: Object storage uses policy-based management that automates data placement and movement without the need to manually migrate data and optimize storage systems. Automation speeds data delivery, and reduces the possibility of human error, the need for multiple storage management tools, and training.



Enterprise SSDs (PCIe NVMe, & SAS) are tasked with providing greater storage capacity and meet stricter design requirements than client SSDs, for use in large servers and data centers. A quality SSD must offer low power consumption and high power density with excellent thermal management and overall energy efficiency.



Dell EMC OpenManage Enterprise Power Manager . , > OpenManage Enterprise Power Manager API. . Dell EMC OpenManage Enterprise CloudIQ . , . CloudIQ Public API.

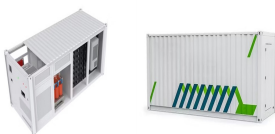
ENTERPRISE POWER STORAGE DISPLAY MOVEMENT



That picture is now changing as better enterprise capabilities are being developed and implemented. manipulation, management, movement, control, display, switching, interchange, transmission, or reception of data or information; includes (including imaging peripherals, input, output, and storage devices necessary for security and



management officers or installation transportation officers; strategic mobility officers; defense movement coordinators; embarkation officers; and unit movement personnel. 1. U.S. Transportation Command USTRANSCOM Mission Statement: Develop and direct the Joint Deployment and Distribution Enterprise (JDDE) to globally



I have a scenario. We issue material from RM Storage Location A to WIP Storage Location B, C, D. thru movement type 311 T-Code used MB1B & MB26. Every end of the week we want how much material in qty and value transferred from A to B, A to C and A to D. I have used MB51 - Problem - I can give storage location A not B or C or D.



Data transfer between Power BI and the on-premises data gateway is secured through Azure Service Bus. Credentials provided by gateway administrators are encrypted to help protect your information in the cloud and only decrypted on the gateway machine. Standard vs Personal Mode



It offers scale-up and scale-out compute and storage, supporting up to 2.8PB effective capacity on each appliance, and eight active-active nodes; high performance using end-to-end NVMe, dual ???

ENTERPRISE POWER STORAGE DISPLAY MOVEMENT



Note. There are four content collaboration and delivery usage scenarios that build upon each other. The enterprise BI scenario is the fourth scenario. A list of all scenarios can be found in the Power BI usage scenarios article.. The managed self-service BI scenario introduces an important concept about decoupling semantic model and report development. ???



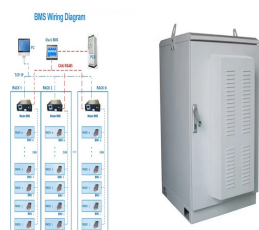
Gain new perspectives and knowledge about enterprise resource planning in blog posts from community members. Share your own comments and ERP insights today! If the business requires the system to determine the storage type separately based on movement type then we need to use "Reference to storage type search" field in the "determine search



Power Enterprise Pools. Power Enterprise Pools 1.0 and 2.0 offers enterprise-level companies a way to use core and memory capacity licenses across a pool of IBM Power Systems, wherever and whenever they are needed. Power Enterprise Pools 1.0/2.0 - Overview; Power Enterprise Pools 2.0 - Using prepaid Capacity Credits and Add more Capacity Credits



I have seen this setting: "Ease cursor movement between displays" referenced. I have two monitors, not the same size, and the cursor "sticks" at top and bottom corner of the main (larger) screen. The setting ""Ease cursor movement between displays" in Settings" doesn't appear in my settings. The references I see show it under

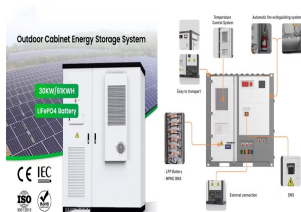


Three new offerings that make Fivetran the most comprehensive and complete enterprise-grade platform for automated data movement. Fivetran's fully managed service helps companies power mission-critical workloads and drive data-informed business decisions.

ENTERPRISE POWER STORAGE DISPLAY MOVEMENT



SAP MM Questionnaire in Enterprise Resource Planning Q& A 2 weeks ago; Inspection lot not generating for material and Storage location Combination for STO in Enterprise Resource Planning Q& A a month ago; How to remove serial number inconsistencies by doing a physical inventory count in Enterprise Resource Planning Blogs by SAP a month ago



storage product family delivers built-in block-level intelligence and automation to dynamically manage enterprise data and lower the overall cost of storage. Together, storage virtualization, integrated software, and modular hardware enable exceptional efficiency, simplicity, and security???providing a cost-efficient enterprise storage



Write Off-Loading: Practical Power Management for Enterprise Storage DUSHYANTH NARAYANAN, AUSTIN DONNELLY, and ANTONY ROWSTRON Microsoft Research, Cambridge, UK In enterprise data centers power usage is a problem impacting server density and the total cost of ownership. Storage uses a signi???cant fraction of the power budget and there ???



In a multicurrency application, you cannot apply label-only storage to members of these dimensions: Entity, Version, Currency, and user-defined custom dimensions. To store exchange rates, use Never Share. Data Storage for children of label-only parents is set to Never Share by default. Dimension Hierarchies. Dimension hierarchies:



Top honors in the enterprise cloud storage category of the 2019 "Storage" magazine and SearchStorage Products of the Year competition went to startups LucidLink and Hammerspace as well as object storage specialist Scalify. These products exemplify the movement toward hybrid and multi-cloud use cases.

ENTERPRISE POWER STORAGE DISPLAY MOVEMENT

114KWh ESS

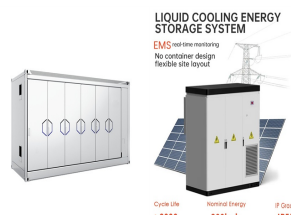


114KWh ESS

Enterprise SSDs (SATA & 3.3V PCIe) are tasked with providing greater storage capacity and meet stricter design requirements than client SSDs, for use in large servers and data centers. A quality SSD must offer low power consumption and high power density with excellent thermal management and overall energy efficiency.



Hello WM Experts, I have old transfer order with storage unit on 916 storage type and storage bin as OBD number. Now, the OBD has been deleted and I am not able to move the storage unit using LT09. When I display the storage unit from handling unit monitor I can see one open transfer order associat



In today's business world, it is becoming increasingly important to have a strong enterprise information management (EIM) platform. This platform brings together data, insights, and operational strategies, acting as a vital center that enhances collaboration, improves efficiency, and supports decision-making. Our study focuses on addressing the challenges ???



Reduce the cost and complexity of using multiple analytics solutions with a comprehensive self-service and enterprise business intelligence (BI) platform. Keep pace with the latest advancements in AI, big data, visualizations, embedded analytics, and certified datasets. Weekly and monthly updates



CyberPower PowerPanel Enterprise for Windows is a centralized power monitoring software designed to monitor and manage a large number of distributed devices in the data center. The software allows users to customize the floor map of data center, and displays the devices and their real-time information in different colors to help users spot the problems at a glance.

ENTERPRISE POWER STORAGE DISPLAY MOVEMENT



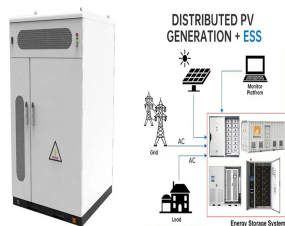
Data movement finds its use in various scenarios within an organization. Here are some key use cases: Data Archiving: Data archiving is the process of moving data that is no longer actively used to a separate storage device for long-term retention. Data movement comes into play here as it helps transfer this inactive data from primary storage



In standard, material movement b/w storage locations is possible only via transfer postings. Following are the relevant movement types for transfer between storage locations: 311 Transfer posting storage location to storage location in one step. 313 Stock transfer storage location to storage location in two steps - removal from storage



Scalability: Object Storage allows for unlimited scalability, enabling businesses to store and retrieve massive amounts of data without worrying about capacity constraints. It can seamlessly accommodate growing data volumes, making it ideal for businesses with ever-expanding storage needs. Cost-Effectiveness: Object Storage typically offers a cost-effective storage solution ???



AI Attached Storage Cloud Data Protection Enterprise Storage HDD HomeLab Hyperconverged In the Lab Medium NAS Networking Power Management Server Server Rack Small NAS Software SSD Storage Adapters Thin Client. Enterprise Power Management The Eaton 9PX Lithium-Ion UPS Simplifies Power Management. by Adam Armstrong August 3, 2021.