

ETA MOVEMENT HAS VERY SHORT ENERGY STORAGE



Which ETA movement should I buy? As with everything, you get what you pay for, and it's important to recognize which movement is in the watch you plan to purchase. One of the first movements every watch collector should be familiar with is the ETA 2824-2, which is an automatic movement used in a multitude of timepieces.



What are ETA movements? ETA movements are found in numerous timepieces, from affordable entry-level watches to premium luxury timepieces, proving their versatility and broad appeal. In terms of horological milestones, the ETA 2824-2 and the ETA 2892-A2 calibers are perhaps the company's most famed accomplishments.



Does ETA supply movements? ETA focuses on the development of movements and usually supplies various brands with complete, assembled movements. However, some companies prefer the supply of movements in building their in-house movements.



What is the ETA 2824-2 movement rate? Standard grade movements are adjusted in two positions with a rate of ± 12 seconds per day and a maximum variation of ± 30 seconds a day. This makes the ETA 2824-2 movement acceptable for daily wear, inexpensive watches, or watches worn irregularly for special occasions.



What is the ETA 2824-2 movement? The ETA 2824-2 movement is a self-winding mechanical calibre that vibrates at 28,800 beats per hour and offers about 38 hours of power reserve. It has a diameter of 25.6mm and a thickness of 4.6mm. The "-2" suffix in its name refers to its generation.

ETA MOVEMENT HAS VERY SHORT ENERGY STORAGE



Does Eta make their own timepieces? While they do produce their own quartz timepieces, what ETA is really known for is their "bauches" and movements that can be found in many watches produced by numerous manufacturers worldwide. It's been said that if you wear a luxury timepiece that doesn't have an in-house movement, chances are it is an ETA.



The ETA movement is the cornerstone of Swatch, and its history dates back to the end of the 18th century: a watch factory established in 1793. In 1855, another factory specializing in the manufacture of "Ebauches (semi-finished watch movements)" was opened. It was later named ETA.



It carries a very classic aesthetic with a beautiful, balanced dial. Powered by the ETA 2892-A2, its timekeeping features prove just as elegant as it looks. However, it should be known that this movement comes from the ETA 2892 movement, a retrofitted match to TAG's iconic Monaco line. Having such a powerful movement powering an iconic



ETA Movements Explained. If you're searching for a timepiece in the luxury watch market, ETA movements prove to be a good place to start. They're present as mechanical and automatic movements for many of the big names in the industry, so chances are you'll be looking at several ETA movements when you're starting a collection.



From entry-level timepieces to luxury Swiss watches, ETA movements have played an integral role in powering countless watches across the globe. ETA SA Manufacture Horlogère Suisse, commonly known as ETA, is a subsidiary of the Swatch Group, one of the largest watchmaking conglomerates. With a rich heritage dating back to 1793, ETA has become

ETA MOVEMENT HAS VERY SHORT ENERGY STORAGE



Europe and China are leading the installation of new pumped storage capacity ??? fuelled by the motion of water. Batteries are now being built at grid-scale in countries including the US, Australia and Germany. Thermal energy storage is predicted to triple in size by 2030. Mechanical energy storage harnesses motion or gravity to store electricity.



How Many Grades of ETA Movements Are There? ETA offers four grades of watch movements: Standard Elabore (Elaborated) Top Chronometer Accuracy Between Grades: These ratings may vary between specific caliber numbers, but here are the specs for the popular ETA caliber 2824-2: Standard ??? adjusted in two positions; accuracy of ± 12 sec/day up to \pm



This is seasonal thermal energy storage. Also, can be referred to as interseasonal thermal energy storage. This type of energy storage stores heat or cold over a long period. When this stores the energy, we can use it when we need it. Application of Seasonal Thermal Energy Storage. Application of Seasonal Thermal Energy Storage systems are



In practice, this meant that a number of ateliers were making very specific components (such as the balance spring, mainspring and other parts that demanded great precision and expertise) while other workshops were building semi-assembled watch movements (?bauches). ?bauches are movements that contain most basic structural elements but are



In fact, some traditional energy storage devices are not suitable for energy storage in some special occasions. Over the past few decades, microelectronics and wireless microsystem technologies have undergone rapid development, so low power consumption micro-electro-mechanical products have rapidly gained popularity [10, 11]. The method for supplying ???

ETA MOVEMENT HAS VERY SHORT ENERGY STORAGE



To justify its use in watches across a wide range of prices, the 2824-2 is (or was) available in several different quality grades. The highest grade is the Chronometre level, which indicates the movement has chronometer certification and is adjusted in five different positions. At the other end of the spectrum is the Standard level, which offers an accuracy of ???



The ETA caliber 2893-2 is part of the Mecaline Specialities line of ETA movements. This caliber is available in different grades and can be supplied by ETA with a Chronometer rating. The 2893-2 is very similar to the ETA 2892-A2 except that it has a modular GMT complication. Official ETA tech sheets were found dated as far back as 2002, showing that this movement has been in ???



The energy storage capacity of an electrostatic system is proportional to the size and spacing of the conducting plates [[133], [134], [135]]. However, due to their relatively low energy intensity, these systems have very limited conventional support in the short term.



The distal limb muscle-tendon units of these animals are often comprised of muscles with very short fibers and long tendons. The length of some tendons can exceed their muscle's fiber lengths by tenfold or more. Role of Elastic Energy Storage in Locomotion and Movement Control. Elastic energy storage in muscle and tendon is important in at



An ETA 2824-2 looks kind of lost in a 44mm case (or even larger). It was the demand for large watches which eventually lead to the Valgranges collection of movements. To encounter this trend, a new caliber emerged: the Valgranges, an impressive 16 1/2 lines movement. ETA press release: From Valjoux to Valgranges

ETA MOVEMENT HAS VERY SHORT ENERGY STORAGE



Short duration (~15 min) Very good RTE (~85%) Cycle life: 200,000 (~20 years) Highly flexible . Flywheels. Ridge Energy Storage & Grid Services LP. March 16, 2021. 5. Storage Technologies: Electrochemical . To date, energy storage has been added "on the margins" to impart flexibility to the grid.



As an effective approach of implementing power load shifting, fostering the accommodation of renewable energy, such as the wind and solar generation, energy storage technique is playing an important role in the smart grid and energy internet. Compressed air energy storage (CAES) is a promising energy storage technology due to its cleanness, high ???



Due to high power density, fast charge/discharge speed, and high reliability, dielectric capacitors are widely used in pulsed power systems and power electronic systems. However, compared with other energy storage devices such as batteries and supercapacitors, the energy storage density of dielectric capacitors is low, which results in the huge system volume when applied in pulse ???



C07.1XX - This version has the above improvements plus a synthetic escapement for lower friction, thus requiring less energy from the mainspring. The "Powermatic 80" movements in the latest Tissot and Certina models are based on this.



Energy Technologies Area (ETA) researchers are continually building on the strong scientific foundation we have developed over the past 50 years. Energy Storage includes a broad range of technologies that can operate across various time and length scales, and which can transform nearly every aspect of society, from transportation to

ETA MOVEMENT HAS VERY SHORT ENERGY STORAGE



Breitling has used ETA movements in the majority of their watches for a very long time, to say they have a very beneficial and close relationship would be an understatement. Breitlingsource lists 11 in-house movements of more than 50 mechanical and quartz movements and variants that were used historically:



Energy storage will be required over a wide range of discharge durations in future zero-emission grids, from milliseconds to months. No single technology is well suited for the complete range. Using 9 years of UK data, this paper explores how to combine different energy storage technologies to minimize the total cost of electricity (TCoE) in a 100% renewable ???



solutions. The company has firmly positioned itself as a leader in the energy transition, with over 50 percent of its new investments directed towards renewables and transitional energy. Mercuria has made substantial contributions to projects such as renewable power, energy storage, grid



Both movements are very similar as the ETA 2836-2 is an advancement of the ETA 2824-2. The two movements have a similar diameter of 25.6mm. The main difference between these two movements is that 2836 holds a day-date calendar complication while 2824 houses only the date complication. That stands to be the major difference between these two



The ETA movement has been invented in 1856, by Urs Schild and Dr. Joseph Girard, when the ETA SA Manufacture Horlogère Suisse was also created. Most of the watches nowadays feature the ETA movement, either in quartz or mechanical calibers, ?bauche or only partial. ETA 2894 is Very Complex ETA 2894. The ETA 2894 is a chronograph caliber

ETA MOVEMENT HAS VERY SHORT ENERGY STORAGE



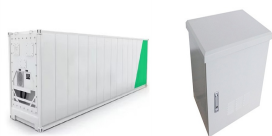
Eta spent a massive amount of energy on their tooth profiles, back when there was little incentive to advance much at all in mechanical watchmaking. 8Ls are only in very high end, and very jumbo sized, Seikos. I have a 2000 Seamaster 300 professional that I bought new with an ETA movement that has been serviced once in 20 years and has



Short Term Energy Storage: Physical Properties and Economic Costs.
Short term energy storage will be used to store wind and solar electricity generation in a Net-Zero future - helping to smooth the variability of wind and solar electricity generation and ensure the provision of a stable and reliable energy supply over minutes, hours, and days.



The ETA 2824 is reliable, accurate and durable earning the title of a workhorse providing the hours, minutes, sweep seconds and date functions. The robust yet precise movement is simple yet effective. The ETA 2892 is very similar to the ETA 2824 offering the same functions yet with a much slimmer profile, which is considered a more premium model.



None of the ETA Precidrive movements appear to have anything like this. The Longines VHP movements do have leads for some sort of electronic interface but it's not documented. CURRENT: Casio G-Shock DW5600E; Certina DS Action Diver 38, DS-2 125th Anniversary; Hamilton Khaki Field Auto 38; Longines Record 38; Omega Aqua Terra 38; Seiko ???