

FENGJUN 5 2 8 GENERATOR DISASSEMBLY



What happens if a generator fails to start? ator until fuel and exhaust leaks have been repaired.If the generator fails to start,cranking will dis-continue in 20 to 60 seconds,depending on how cold the engine is,and the amber status lamp will blink Shutdown Code No. See Troubleshooting (Operator???'s Manual) if the *The reen run lamp and guages will also flash momentari



How do you reassemble a generator? Torque the nuts on the generator through bolts to 38-43 Nm (28-32 ft-lb). Secure the end bell cover plate and torque the 4 screws to 3.8 Nm (8 in-lb). Reassemble all the remaining components. Make sure to resecure the ring terminals of grounding straps and leads with 2 star washers, one on each side, for good electrical continuity.



Are Cummins Onan generator parts flammable? See the Parts Manual for part identification numbers and required quantities. Genuine Cummins Onan replacement parts are recommended for best results. The generator set or sets included in this manual are not ignition protected and shall not be used in a flammable vapor environment.



What is included in a generator set manual? This manual includes generator set specifications, troubleshooting resolutions for all fault codes, maintenance schedule, service and maintenance procedures for the generator set control, engine, accessories, and generator as well as adjusting the AC output voltage and changing the generator set frequency .



How do you stop a generator set from running? Push the generator set line circuit breaker to off and disconnect the PTO clutch,if so equipped. If the generator set now runs,reduce the number of electrical and mechanical (PTO) loads. Check fuel level and refill as necessary. (Note: The generator set fuel pickups are probably higher than the propulsion engine fuel pickups.)

FENGJUN 5 2 8 GENERATOR DISASSEMBLY



What happens if a generator is faulty? Electrical Generating Equipment
Incorrect operation and maintenance can result in severe personal injury or death. Make sure that only suitably trained and experienced service personnel perform electrical and/or mechanical service. Moving Parts
Moving parts can cause severe personal injury. Use extreme caution around moving parts.



Operation and Maintenance Manual (Original Operation and Maintenance Manual) Diesel engine KD83V16 From serial number 2021740037 (5) years or 3000 hours of total operation??? instructions of the generator set.
For further explanation or information, the Customer Service and Customer Service training



MAC AFRIC 8.75 kVA (7 KW) Standby Petrol Generator R 17266,67;
MAC AFRIC 63A 4-pole Enclosed Change Over Switch R 2660,00; MAC AFRIC 6.5 kVA (5 KW) Standby Petrol Generator (with T.F.V meter) R 11993,32; MAC AFRIC 6.5 kVA (5 KW) Standby Diesel Generator R 23993,34; MAC AFRIC 5.6 kVA (4 KW) Standby Petrol Generator R 11860,00



The generator set must be installed, operated and safety precautions must be followed in accordance with the maintenance and user manual. The generator set will serve safely only in this way. Safe operation responsibility of the generator set is belongs to the people who install, use and maintain the generator set.



Our Great wall parts online team is here to make maintenance and repair of your Fengjun 5 pickup as simple and straightforward as possible. We keep a wide range of genuine OEM parts

FENGJUN 5 2 8 GENERATOR DISASSEMBLY



2.1 About This Manual This manual covers the operation and maintenance of the HGJAA and HGJAB Series of generator sets (gensets). Each operator should study this manual carefully and observe all of its instructions and safety precautions. Keep this manual and the Installation Manual with the other vehicle manuals.



I have an Oman generator model number 5.eghem/340. The motor runs great but not generating any electric. I took the cover off where the wires come out of generator and no power to terminals. Looking for owners manual for my 4.0 RV-LP generator. Model number OBGAL-1RY16013C Serial number C843771092. Thanks. July 26, 2018 at 6:46 pm . Billy



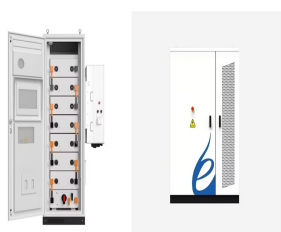
5. START-UP 5.0 START-UP SEQUENCE 5.0.1 Static checks 5.0.2 Rotating checks a) Rotating checks not excited b) Rotating checks at no load excited c) Generator and site safeties d) Rotating checks at full load 5.0.3 Generator Start Up check list 5.1 ELECTRICAL START-UP INSPECTION 5.1.0 General points 5.1.1 Windings Insulation



XG8000E portable generator pdf manual download. Also for: Xg6500, Xg7000, Xg7000e, Xg8000, Xg series, 005796-0, 005797-0, 005798-0, 005800-0, 005747-0. Sign In Upload. Download Table of Contents Contents. Add to my manuals. ???



while the generator set is running unless the vehicle is equipped with a working carbon monoxide detector. ??? The exhaust system must be installed in accordance with the generator set Installation Manual. Engine cooling air must not be used for heating the ???



Hi Graham, I have the FA 28/2.8, it is a different design to all other 28mm Pentax lenses and IMHO the equal best optically the other being the K 28/3.5. Well worth spending a little to have it serviced. All my lens service/repairs have been handled by Michael Spencer, factory trained 47

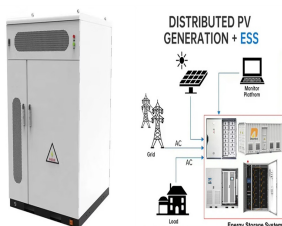
FENGJUN 5 2 8 GENERATOR DISASSEMBLY

years experience, if it can be cleaned then he's your man!

FENGJUN 5 2 8 GENERATOR DISASSEMBLY



I am trying to disassemble a Pentax FA 28/2.8 lens. It is in excellent condition and takes amazing photos. One issue that bothers me is the very tiny streaks of fungus on the front element. I successfully retrieved the optical block from the lens housing however the front glass element seems to be impossible to be detached.



This manual should be considered as a permanent part of the unit and should remain with the unit when **STARTING THE GENERATOR** 5.1 Remove all loads from AC socket. 5.2 Switch off AC breaker. Fig.21 5.3 Turn on the fuel cock. Fig.22 5.4 Set the choke lever to OFF position.



There were MC 50/1.7, MD 28/2.8, and 2 MD 35-70/3.5 (both non-macro variant). Only 1 of the MD 35-70/3.5 was in "good enough" shape (but probably not for photo taking) to be kept. The prime lenses were in very bad shape. Next 80-200mm f/4.5 Zoom-Nikkor.C Disassembly and Cleaning. Published by diediemustdive. View all posts by



operate the generator with wet hands 3. Never. use water or any other liquids to clean the generator. 4. Make sure you ground (earth) the generator. **ADDITIONAL SAFETY RULES FOR GENERATORS.** 1. Always . make sure the applied load does not exceed the generator rating. Overloading the generator is dangerous and could cause serious damage. 2. Always



Get reliable backup power for your home, DIY projects, or light trade jobs with the SGS 2.8 kVA Portable Petrol Generator. This powerful and user-friendly generator offers: 2.2 kW Rated Power / 2.8 kVA Maximum Power: Provides ample power for various applications.

FENGJUN 5 2 8 GENERATOR DISASSEMBLY



Do not run the generator until fuel and exhaust leaks have been repaired.

4. If the generator fails to start, cranking will dis-continue in 20 to 60 seconds, depending on how cold the engine is, ???



ENGINE AC GENERATOR AC GENERATOR DISASSEMBLY AND ASSEMBLY 9EN0187 Disassembly Procedure 1. generator pulley 2. rotor assembly 3. rear bearing 4. bearing block 5. front bearing 6. front cap 7. stator assembly 8. retaining plate 9. adjustor and brush stand 10.



Pentacon auto 2.8/135 - partial disassembly and cleaning :: Accessories and Care :: Home :: Equipment Care and Repairs Pentacon auto 2.8/135 - partial disassembly and cleaning Please support mflenses if you need any graphic related work order it from us, click on above banner to order!



6,8dk-28 Instruction Manual (Operation) - Free download as PDF File (.pdf), Text File (.txt) or read online for free. 1. The document provides instructions for the safe operation of Daihatsu Diesel engines, noting the importance of using genuine parts and taking safety precautions. 2. Imitation engine parts can degrade performance and cause accidents due to inferior materials and ???



The generator set operation manual contains Figure 5-17 when troubleshooting procedures in the instructions for checking and changing the controller Section 5.13 indicate a possible controller problem. Page 88: Troubleshooting Load Management Problems 5.15 Troubleshooting Load 1.