

FENGJUN 6 GENERATOR REGULATOR



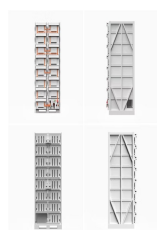
you choose the regulator by the btu or the cu ft of flow as well as the pressure. most lp systems use a two stage or two regulator system then a third demand regulator. the last (middle regulator) pressure regulator needs to ???



One item of note on the CE generator w/ regulator, they make two different regulators. You want the "low output" regulator if you are using a 5.5amp 12V battery (the batt that fits inside the horseshoe oil tank). ??? Converting the Harley Davidson Model 32E generator 6-Volt 3-brush to a 2-brush, 12-Volt; ??? Custom-Cycle transistor ignition



How can I check if it is the generator or the regulator? Thanks in advance for your expert advices. Cheers Pascal. Top. Steve Harrison 356 Fan Posts: 3301 Joined: Sat Jan 24, 2009 3:39 pm Location: Auburn AL. Re: Generator or regulator? #2 Post by Steve Harrison >> Wed Nov 07, 2012 7:21 pm.



VT No: 32-0790 Generator is 2-brush type with built-in regulator. Generator is low output for use with 12 volt mini battery. Generator fits 1936-1969 FLH including Flathead models. On pre-1958 models case must be drilled to accept 5/16??? ???



5KW Single Phase Automatic Voltage Regulator ??? Small Generator. Generator Parts. R 302.06 Original price was: R302.06. R 286.96 Current price is: R286.96. Incl. Vat-5%. Quick View. Close. Add to cart. We focus on new Generator ???



Buy ? Suitable for Great Wall Tengyu C50 Haval H5 H6 Fengjun H2/H3 Coolpad Generator Regulator online today! * describe: Dear sir/madam, hello, thank you for visiting our store The ???

FENGJUN 6 GENERATOR REGULATOR



on my 1952 8n the stud closest to block is wired to ground on the voltage regulator. In a You tube video on how to Motor a 8n 6v positive Ground generator which looked just like mine the stud closest to the block was called field and used as field to motor the gen. Video showed jumper wire from field to ground then another jumper hot wire to arm stud on back.



a). Rising volts with rising speed = leads from generator to regulator are in good order. b). 0 volts = field lead is Earthed. Find where it is Earthed and rectify. c). 2-4 volts (6 and 12 volt systems) = open circuit in field lead between generator and regulator. Find damaged section of lead and rectify.



FENG - Fake Engine Noise Generator DELETE. Today at 6:05 AM; Ford Explorer ST Build Projects. 2025 Ford Digital Experience. Latest: Blue Beast; Yesterday at 8:59 PM; New Member Introduction. B. Whirring noise while driving. Latest: bmidd; Yesterday at 8:09 PM; Maintenance, Warranty Issues & Trouble. Z.



Posted: Wed Mar 16, 2005 3:54 pm Post subject: A 6 volt generator/regulator wiring question: DF has one wire and D+ has two? That's how my generator was wired to my voltage regulator. Attempting to test the generator by grounding DF to generator housing, and testing volts from D+ to generator housing, with regulator disconnected from both



Beetle Voltage Regulator for Dynamo / Generator, 6 Volt Classic Aircooled VW Other Engine Electricals parts by Limebug. 6V DC Regulator for T1 Beetle 1947-66. Direct mount (Piggyback) Regualtor for Early Two pin Dynamo. Fits: T1 1947-66 Beetle. OE Reference: 113-903-801/C SKU: 010130042. Additional information. Weight:



What I didn't know was that my regulator is polarity-sensitive. So here are my questions-Is there a procedure for bench testing a regulator (I know the old ground the field terminal trick, but I want to test to see if the regulator is fried not just bypass it..) My reg. is a Delco-Remy 1118726

FENGJUN 6 GENERATOR REGULATOR

6V-P How do I choose a regulator to work with my

FENGJUN 6 GENERATOR REGULATOR

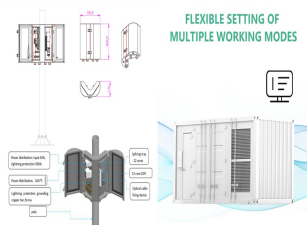


Image and Vision Computing 26 (6), 761-775, 2008. 48: 2008: Particle Pollution Estimation from Images Using Convolutional Neural Network and Weather Features. Q Bo, W Yang, N Rijal, Y Xie, J Feng, J Zhang. 2018 25th IEEE International Conference on Image Processing (ICIP), 3433-3437, 2018. 46:



A generator voltage regulator is an essential component of an electrical generator that controls the output voltage to maintain it within a set range. It works by adjusting the excitation current supplied to the generator's field winding, thereby regulating the amount of voltage produced by the generator.



You may decide to invest in two generators for your home: a high-powered conventional generator for powering large appliances and a smaller inverter generator for electronics. If that's the case, you can use the calculator twice to work out what size generator you need for each purpose.



Rebuilt 6-Volt Generator with Regulator. Sold individually. ??? Core Charge Applies For more information please see Core Charge and Exchange Explained. Additional information. Core Charge: \$80.00. This Product Fits The Following ???



The generator automatic voltage regulator also helps to maintain the output terminal at a safe voltage level and can provide surge protection. Without AVR, the generator may output a terminal voltage that is too high for the equipment ???



As far as electromechanical regulators go, the 2 main relays are set up with N.C. contacts only. For the voltage regulator relay, it will oscillate (vibrate) when the output voltage to the battery exceeds a certain preset point. The "current regulator" coil is in series from the ARM terminal and

FENGJUN 6 GENERATOR REGULATOR

the cutout.

FENGJUN 6 GENERATOR REGULATOR



an immediate design. My concluding is that generator brushes were adequate and regulator design was adequate and very serviceable. Amount of current (watts or amps) to run your car. Experience has taught us that 12 volt vehicles (356C Carrera and 912 with the 90MM generator) can survived prodcing approximately 300watts (volts X amps =watts).



I have a motor with a 6 volt generator and separate regulator, with a 6 volt negative ground battery. I had trouble with no charging, and had the generator and regulator tested by a qualified repair service. I was told everything was okay. I replaced the equipment, polarized the generator



below, it also has a screw on the generator input tab for the generator output wire/screw. If you help me, you will get a FREE Model A 6v Voltage Regulator. Here are the params -You MUST be willing to do the following:
- Own a Model A w/ Positive ground. (original wiring) - Have a 6v original style generator (no alternators) - own a decent



Front window regulator motor introduce. It consists of a regular manual glass lifter, a reversible DC motor, and a reducer. The working principle is to start the electric motor, which drives the ???



A generator has 3 connections that connect to the regulator, the field, armature and ground. The original regulators for these are almost always mechanical. A generator has a polarized output and if you measure it's output, it will be the full voltage as the regulator is ???



Automatic Voltage Regulators. Automatic Voltage Regulators (AVRs), offered by General Power, are pivotal components that cater to your power stability needs. Designed to optimize electrical system operations, these AVRs, particularly automatic voltage regulators for generators,

FENGJUN 6 GENERATOR REGULATOR

significantly enhance power quality and efficiency.. General Power Offers
One of the Country's ???

FENGJUN 6 GENERATOR REGULATOR



??? Converting the Harley Davidson Model 32E generator 6-Volt 3-brush to a 2-brush, 12-Volt; ??? Custom-Cycle transistor ignition for dual sparkplug; ??? Delco-Remy D-R standard type two- and three unit regulators; ??? Delco-Remy Regulator Test Specifications; ??? Generator Field Switch; ??? Magneto wiring 6V & 12V, without battery;