

FIXED ENERGY STORAGE DEVICE GENSHIN IMPACT



What are fixed storage and energy transfer devices? The Fixed Storage and Energy Transfer Device are devices used to power Energy Transfer Terminals in Fontaine in Genshin Impact 4.1. Learn about Fixed Storage and Energy Transfer Devices, as well as how to use them! What are the Fixed Storage and Energy Transfer Devices?



How do you unlock a research terminal in Genshin Impact? Acquiring the Energy Storage Device and unlocking the Research Terminal is part of the An Eye for An Eye Quest in Genshin Impact. Players must collect three Energy Storage Devices and use them on three different Terminals to remove the barriers blocking the Research Terminal.



Where can I find fixed storage devices & energy transfer devices? Fixed Storage Devices and Energy Transfer Devices are an exploration mechanic in Fontaine currently found in the Liffey Region and Fontaine Research Institute of Kinetic Energy Engineering Region. They can be found both underwater and on land. Fixed Storage Devices are stationary and Energy Transfer Devices can be moved by the player.



How much storage does Genshin Impact take? And for the detailed recommended device specs, you can click the link and check the post from miHoYo. Please note that although it requires only 30 GB of storage space on PC and PlayStation consoles (8 GB on mobile phones), it usually takes more space when you install the game. You might ask:



What is a fixed storage device? Fixed Storage Devices are energy storage units that are commonly seen near Energy Transfer Terminals and allow energy to be transferred from storage devices to them. They can easily be classified due to how their bases are fixed to the ground. Unlike the Fixed Storage Device, these can be picked up and placed anywhere within a limited area.

FIXED ENERGY STORAGE DEVICE GENSHIN

IMPACT



Can storage devices provide energy to transfer and research terminals?
Storage devices can provide energy to Transfer and Research
Terminals. Pick up a portable storage device and put it next to a terminal
that has stopped functioning to return it to normal operation. Community
content is available under CC-BY-SA unless otherwise noted.



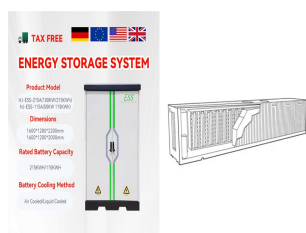
3 ? Energy Concentrating Component locations are found in Fontaine for
Genshin Impact 4.1. Check out how to get all components, and how to use
it to unlock the cage in Kuisel's Clockwork Workshop in this guide! Fixed
Storage and Energy Transfer Device: How to Retrieve All 4 Replica
Anchors: How to Start the Optical Device:



HoYoLAB hoyolab@hoyoverse Genshin Impact genshin_cs@hoyoverse
Honkai Impact 3rd honkai3rd_global@hoyoverse Tears of Themis
totcs_glb@hoyoverse Honkai: Star Rail hsr_cs_en@hoyoverse Zenless
Zone Zero zzz_cs_en@hoyoverse Content Creators
contentcreator@hoyoverse

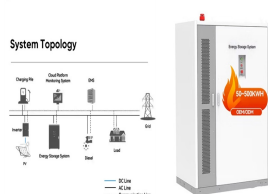


The Central Laboratory Ruins Seelie Puzzle gives a Luxurious Chest
when you find the Four Seelies inside a floating water cube in Genshin
Impact 4.1. See all Seelie locations, and how to solve the Central
Laboratory Seelie puzzle here!



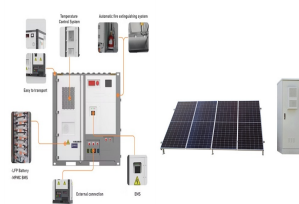
Energy Transfer Terminals are an exploration mechanic in Fontaine
currently found in the Liffey Region and Fontaine Research Institute of
Kinetic Energy Engineering Region. Energy Transfer Terminals can be
used to transfer energy from one Fixed Storage Device or Energy Transfer
Device to another. In some puzzles, the player may have to move an
Energy Transfer Device ???

FIXED ENERGY STORAGE DEVICE GENSHIN IMPACT



fixed energy storage device genshin impact decryption -

Suppliers/Manufacturers Fontaine ALL Energy Transfer Terminal Puzzle Guide Location ??? ALL Energy Transfer Terminal Fuzzle Guide Location Genshin Impact00:00 Energy Transfer Terminal Location 101:23 Energy Transfer Terminal Location 203:14 ???



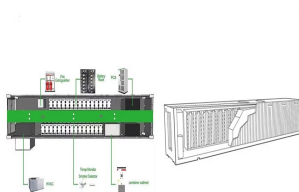
Petrichor is an area in the Nostoi Region of Fontaine in Genshin Impact Version 4.6. Learn where Petrichor is, how to unlock the Nostoi Region, and their release date in this guide! Fixed Storage and Energy Transfer Device: How to Retrieve All 4 Replica Anchors: How to Start the Optical Device:



Acquiring the Energy Storage Device and unlocking the Research Terminal is part of the An Eye for An Eye Quest in Genshin Impact. Players must collect three Energy Storage Devices and use them on



Storage devices can provide energy to Transfer and Research Terminals. Pick up a portable storage device and put it next to a terminal that has stopped functioning to return it to normal ???



Activate the console and move the energy from the fixed device to the transfer device on top of the bookshelf. Grab the container and place it next to the deactivated console to unlock the window.

FIXED ENERGY STORAGE DEVICE GENSHIN IMPACT



Energy Extraction Devices (also known as Saghira Machines) are an Exploration mechanic in Sumeru. There are eight of these devices scattered around the edges of Sumeru's rainforest. These devices are found in ruined forts guarded by various Eremites. When approached, a challenge starts in which the player is tasked with turning off the device by finding two or three ???



3) Head further inside the institute and use the Terminal there to transfer the Energy from the activated Storage Device to the portable Energy Device. 4) Pick up the portable Energy Device and place it in front of the unactivated Terminal near the locked gate to open it. Take the Survey Anchor to complete this sub-quest.



HoYoLAB hoyolab@hoyoverse Genshin Impact genshin_cs@hoyoverse Honkai Impact 3rd honkai3rd_global@hoyoverse Tears of Themis totcs_glb@hoyoverse Honkai: Star Rail hsr_cs_en@hoyoverse Zenless Zone Zero zzz_cs_en@hoyoverse Content Creators contentcreator@hoyoverse



Genshin Impact; miHoYo; HOYO-MiX; HoYoLAB; Glossary; FANDOM. Fan Central BETA Games Anime Movies TV Video Wikis Explore Wikis Community Central Fixed Storage Device and Energy Transfer Device Tutorials Category page. Sign in ???



The Fixed Storage and Energy Transfer Device are devices used to power Energy Transfer Terminals in Fontaine in Genshin Impact 4.1. Learn about Fixed Storage and Energy Transfer Devices, as well as how to use them!

FIXED ENERGY STORAGE DEVICE GENSHIN IMPACT



Forging Press is released in the Version 4.1 update of Genshin Impact, which is on September 27, 2023! Along with it comes new areas to explore, new puzzles to solve, new enemies to defeat, and new content to experience! Version 4.1 Release Date and Patch Notes. Genshin Impact Related Guides. Fontaine Map Guide. Fontaine Area Map Guides



The file size that Genshin Impact takes roughly about 100GB to 115GB of storage space depending on the device you have it installed on. That means you need to free-up that big of a space to be able to play the game! The game is currently in Version 5.1, which was released last October 9, 2024, bringing up the occupied storage space values compared to the ???



Galvana is an open-world NPC located in Administrative Area, Fortress of Meropide, Fontaine. Following a certain dialogue branch for the first time gives the player a Guide to Order. Galvana can be found guarding the Rift of Erosion in the Administrative Area's Dormitory Block. After completing the World Quest Scenes from Life in Meropide: Dead End in Series Scenes from ???



During An Eye for an Eye World Quest in Genshin Impact, travelers get the objective to Acquire the energy storage device and unlock the research terminal ahead. Luckily, it is a very simple task.



2. Place the Energy Transfer Device next to the Fixed Storage Device ??? . 3. Activate the Energy Transfer Terminal below. 4. Transfer the energy from the Fixed Storage Device ??? to the Energy Transfer Device ?? . 5. Carry the Energy Transfer Device and jump to the first floor next to the mechanism to unlock the chest.

FIXED ENERGY STORAGE DEVICE GENSHIN

IMPACT



Genshin Impact's Road to Singularity world quest is one of the many hidden quests in Fontaine is composed of several mini-puzzles that players have to go through to prove their worth, and it



Afterward, take the Energy from the Fixed Storage Device, and aim the cross-hair at the Terminal under the Ousia Block to switch the camera again. Lastly, use the action button on the red Fixed



Six Cipher Letters can be found in the Fontaine Research Institute area of Genshin Impact's 4.1 update. Check out all the Cipher Letters" locations, the rewards and achievements obtained, and how to decipher them in this guide! Fixed Storage and Energy Transfer Device: How to Destroy the Thorny Cyst: How to Stop the Strange Eels: Cipher



To get a Gear Drivetrain in Genshin Impact, players must simply go to the Core Gear Drive in the center of the Abandoned Production Zone and remove it from the edge of the central device.. To open