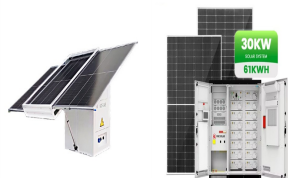


FLYWHEEL ENERGY STORAGE AP



The study presented in this paper aims to use this flywheel energy storage system to attain the goal of . The flywheel energy storage system (FESS) can operate in three modes



The principle of rotating mass causes energy to store in a flywheel by converting electrical energy into mechanical energy in the form of rotational kinetic energy. 39 The energy fed to an FESS is mostly dragged from an electrical energy source, which may or may not be connected to the grid. The speed of the flywheel increases and slows down as



Using energy storage technology can improve the stability and quality of the power grid. One such technology is flywheel energy storage systems (FESSs). and then deliver the appropriate



Flywheel Energy Storage Systems (FESS) work by storing energy in the form of kinetic energy within a rotating mass, known as a flywheel. Here's the working principle explained in simple way, Energy Storage: The system features a flywheel made from a carbon fiber composite, which is both durable and capable of storing a lot of energy.



Flywheel Energy Storage System (FESS) Revterra Kinetic Stabilizer Save money, stop outages and interruptions, and overcome grid limitations. Sized to Meet Even the Largest of Projects. Our industrial-scale modules provide 2 MW of power and can store up to 100 kWh of energy each, and can be combined to meet a project of any scale.



The anatomy of a flywheel energy storage device. Image used courtesy of Sino Voltaics . A major benefit of a flywheel as opposed to a conventional battery is that their expected service life is not dependent on the number of charging cycles or age. The more one charges and discharges the

FLYWHEEL ENERGY STORAGE AP

device in a standard battery, the more it degrades.

FLYWHEEL ENERGY STORAGE AP



This paper presents an overview of the flywheel as a promising energy storage element. Electrical machines used with flywheels are surveyed along with their control techniques. Loss minimization



Modelling and assessment of small scale energy system incorporating FESS with solar photovoltaic (PV) and a diesel generator for use in islanded residential premises with highly intermittent or non-existent grid infrastructure is described.



The main components of a typical flywheel. A typical system consists of a flywheel supported by rolling-element bearing connected to a motor-generator. The flywheel and sometimes motor-generator may be enclosed in a vacuum chamber to reduce friction and energy loss.. First-generation flywheel energy-storage systems use a large steel flywheel rotating on mechanical bearings.



Amber Kinetics is a leading designer and manufacturer of long duration flywheel energy storage technology with a growing global customer base and deployment portfolio. Key Amber Kinetics Statistics. 15 . Years. Unsurpassed experience designing and deploying the world's first long-duration flywheel energy storage systems.



2. Description of Flywheel Energy Storage System 2.1. Background The flywheel as a means of energy storage has existed for thousands of years as one of the earliest mechanical energy storage systems.

FLYWHEEL ENERGY STORAGE AP



Beacon Power is building the world's largest flywheel energy storage system in Stephentown, New York. The 20-megawatt system marks a milestone in flywheel energy storage technology, as similar systems have only been applied in testing and small-scale applications. The system utilizes 200 carbon fiber flywheels levitated in a vacuum chamber.



Flywheel Energy Storage System (FESS), as one of the popular ESSs, is a rapid response ESS and among early commercialized technologies to solve many problems in MGs and power systems [12]. This technology, as a clean power resource, has been applied in different applications because of its special characteristics such as high power density, no requirement ???



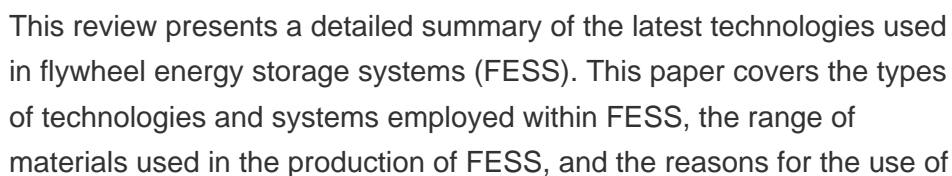
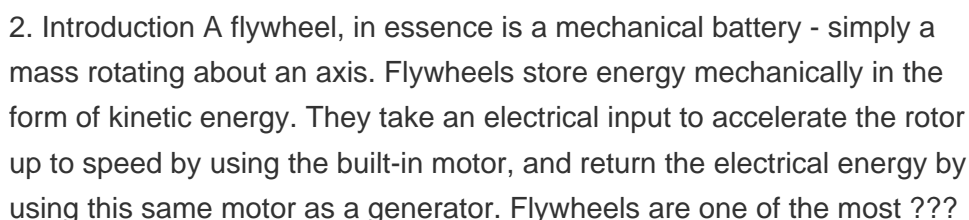
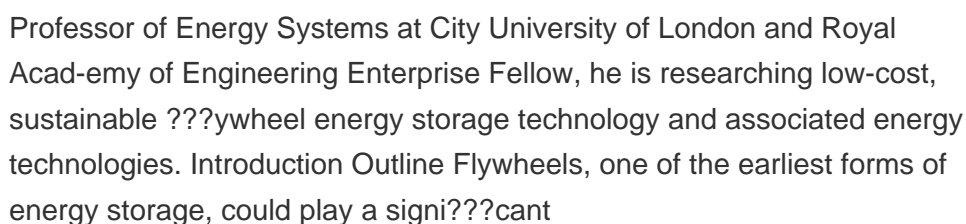
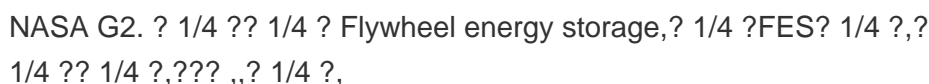
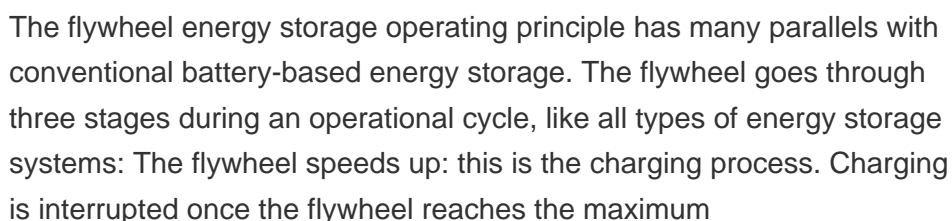
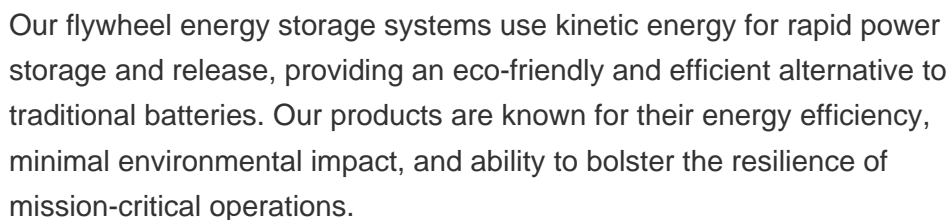
Today, flywheel energy storage systems are used for ride-through energy for a variety of demanding applications surpassing chemical batteries. A flywheel system stores energy mechanically in the form of kinetic energy by spinning a mass at high speed. Electrical inputs spin the flywheel rotor and keep it spinning until called upon to release



Our flywheel will be run on a number of different grid stabilization scenarios. KENYA ??? TEA FACTORY. OXTO will install an 800kW flywheel energy storage system for a tea manufacturing company in Kenya. ???



Flywheel is a rotating mechanical device used to store kinetic energy. It usually has a significant rotating inertia, and thus resists a sudden change in the rotational speed (Bitterly 1998; Bolund et al. 2007). With the increasing problem in environment and energy, flywheel energy storage, as a special type of mechanical energy storage technology, has extensive ???



FLYWHEEL ENERGY STORAGE AP

these materials. Furthermore, this paper provides an overview of the ???

FLYWHEEL ENERGY STORAGE AP



A review of energy storage types, applications and recent developments. S. Koohi-Fayegh, M.A. Rosen, in Journal of Energy Storage, 2020 2.4 Flywheel energy storage. Flywheel energy storage, also known as kinetic energy storage, is a form of mechanical energy storage that is a suitable to achieve the smooth operation of machines and to provide high power and energy ???



Our flywheel will be run on a number of different grid stabilization scenarios. KENYA ??? TEA FACTORY. OXTO will install an 800kW flywheel energy storage system for a tea manufacturing company in Kenya. The OXTO flywheel will operate as UPS system by covering both power and voltage fluctuation and diesel genset trips to increase productivity.



The flywheel energy storage system (FESS) offers a fast dynamic response, high power and energy densities, high efficiency, good reliability, long lifetime and low maintenance ???



Flywheel Energy Storage (FES) systems refer to the contemporary rotor-flywheels that are being used across many industries to store mechanical or electrical energy. Instead of using large iron wheels and ball bearings, advanced FES systems have rotors made of specialised high-strength materials suspended over frictionless magnetic bearings