

# FLYWHEEL ENERGY STORAGE ECONOMIC PARAMETERS



Energy dissipations are generated from each unit of HP system owing to the transmitting motion or power. As shown in Fig. 1 [5], only 9.32 % of the input energy is transformed and utilized for the working process of HPs [6]. Therefore, to better develop the energy-conversation method for a HP, there is a need to investigate the primary reason ???



Flywheel energy storage systems are considered to be an attractive alternative to electrochemical batteries due to higher stored energy density, higher life term, deterministic ???



Flywheel Energy Storage System (FESS) has the advantages of high instantaneous power, high energy storage density, high efficiency, long service life and no environmental pollution. In this paper, the FESS charging and discharging control strategy is analyzed, and the active disturbance rejection control (ADRC) strategy is adopted and improved.



With the rise of new energy power generation, various energy storage methods have emerged, such as lithium battery energy storage, flywheel energy storage (FESS), supercapacitor, superconducting magnetic energy storage, etc. FESS has attracted worldwide attention due to its advantages of high energy storage density, fast charging and discharging ???



The aim is to determine the geometric parameters of a flywheel dependent on a restricting factor; surroundings and influences must be taken into consideration, which includes the general configuration of the flywheel energy storage device, operation speed, material behaviour, the stored energy, rotor dynamics, moment of inertia, structural

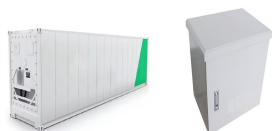
# FLYWHEEL ENERGY STORAGE ECONOMIC PARAMETERS



The text then examines the application of flywheel energy storage systems. Basic parameters and definitions, advantages and disadvantages, economic considerations, road vehicle applications, and applications for fixed machines are considered. The book also evaluates the flywheel, including materials, radial bar and filament flywheel, composite



Table 3 summarizes the major technical and economic parameters of different ESS types, including flywheel energy storage (FES), compressed air energy storage (CAES), pumped hydro storage (PHS), battery electrical storage (BES) options such as lithium-ion (Li-ion), vanadium redox flow batteries (VRFB), lead acid batteries and Sodium sulfur



This study addresses speed sensor aging and electrical parameter variations caused by prolonged operation and environmental factors in flywheel energy storage systems (FESSs). A model reference adaptive system (MRAS) flywheel speed observer with parameter identification capabilities is proposed to replace traditional speed sensors. The proposed



**Kinetic Energy-Based Flywheel Energy Storage (FES):** A flywheel is a rotating mechanical device that stores rotating energy. When a flywheel needs energy, it has a rotating mass in its core that is powered by an engine. The spinning force propels a tool that generates energy, like a slow-moving turbine.



The flywheel energy storage system (FESS) offers a fast dynamic response, high power and energy densities, high efficiency, good reliability, long lifetime and low maintenance

# FLYWHEEL ENERGY STORAGE ECONOMIC PARAMETERS



Figure 1. The structure of the Flywheel I rotor. An Energy Storage Flywheel Supported by Hybrid Bearings . Kai Zhanga, Xingjian aDaia, Jinping Dong a Department of Engineering Physics, Tsinghua University, Beijing, China, zhangkai@mail.tsinghua .cn . Abstract???Energy storage flywheels are important for energy recycling applications such as cranes, subway trains.



The flywheel energy storage operating principle has many parallels with conventional battery-based energy storage. The flywheel goes through three stages during an operational cycle, like all types of energy storage systems: The flywheel speeds up: this is the charging process. Charging is interrupted once the flywheel reaches the maximum



KEYWORDS ??? Techno-economic analysis, energy storage, transportation, ???ywheel. 1 Introduction Flywheel kinetic energy storage offers very good features such as power and energy density[1, 2]. Moreover, they have long lifetime in comparison to ???



Long-duration flywheel energy storage is considered a new contender in the energy storage market. This energy storage technology has been previously evaluated in a techno-economic study, but it did not consider uncertainties in the model input data. Fig. 12 shows the histograms of pertinent economic parameters associated with the optimum



This work investigates the economic efficiency of electric vehicle fast charging stations that are augmented by battery-flywheel energy storage. Energy storage can aid fast charging stations to cover charging demand, while limiting power peaks on the grid side, hence reducing peak power demand cost.

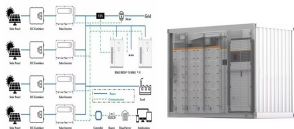
# FLYWHEEL ENERGY STORAGE ECONOMIC PARAMETERS



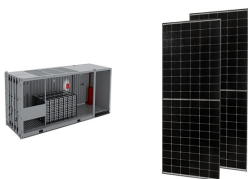
The development of a techno-economic model for the assessment of the cost of flywheel energy storage systems for utility-scale stationary applications. Author links open Sensitivity and uncertainty analyses were performed to identify the key parameters that drive economic performance. The base case values of the LCOS are \$230.88 and \$329.93



In the past few decades, electricity production depended on fossil fuels due to their reliability and efficiency [1]. Fossil fuels have many effects on the environment and directly affect the economy as their prices increase continuously due to their consumption which is assumed to double in 2050 and three times by 2100 [6] g. 1 shows the current global ???



Storage Technology Basics A Brief Introduction to Batteries 1. Negative electrode: "The reducing or fuel electrode???which gives up electrons to the external circuit and is oxidized during the electrochemical reaction." 2. Positive electrode: "The oxidizing electrode???which accepts electrons from the external circuit and is reduced during the electrochemical reaction."



The first chapter of the book briefly presented a list of advantages and disadvantages of all energy storage technologies, including the FESS, and the last chapter will bring up these discussions again in a thorough and comparative manner between all the categories of energy storage technologies covering a wide range of technical and economic



In order to assess the electrical energy storage technologies, the thermo-economy for both capacity-type and power-type energy storage are comprehensively investigated with consideration of political, environmental and social influence. And for the first time, the Exergy Economy Benefit Ratio (EEBR) is proposed with thermo-economic model and applied ???











**Product Model**

H4-100-120V/100Ah/120V/100Ah  
H4-150-120V/150Ah/120V/150Ah

**Dimensions**

1600\*1000\*220mm  
1600\*1000\*220mm

**Rated Battery Capacity**

200Ah/100Ah/150Ah

**Battery Cooling Method**

Air Cooled Liquid Cooled

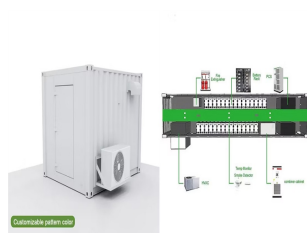


Web: <https://www.twojaelektryka.com.pl>

# FLYWHEEL ENERGY STORAGE ECONOMIC PARAMETERS



The size of the air-gap is an important factor when designing a flywheel energy storage system [14], [15] which is dependent on various parameters including flywheel speed and expansion rate at high speeds [15], [16]. The rotation of an enclosed flywheel creates a complex air flow within the air-gap, resulting in heat generation due to



Battery energy storage technology is a way of energy storage and release through electrochemical reactions, and is widely used in personal electronic devices to large-scale power storage 69. Lead



of long-discharge flywheel energy storage for microgrid application is explored by assessing its techno-economics when using solar photovoltaic (PV)-based energy systems. For this work, Busuanga Island, located economic parameter used for optimization is levelized cost of electricity (LCOE), which accounts for the total