

FLYWHEEL ENERGY STORAGE ELECTRONICS



What is a flywheel energy storage system? Flywheel energy storage systems (FESS) are a great way to store and use energy. They work by spinning a wheel really fast to store energy, and then slowing it down to release that energy when needed. FESS are perfect for keeping the power grid steady, providing backup power and supporting renewable energy sources.



What is the difference between a flywheel and a battery storage system? Flywheel Systems are more suited for applications that require rapid energy bursts, such as power grid stabilization, frequency regulation, and backup power for critical infrastructure. Battery Storage is typically a better choice for long-term energy storage, such as for renewable energy systems (solar or wind) or home energy storage.



What is a compact and highly efficient flywheel energy storage system? Abstract: This article proposed a compact and highly efficient flywheel energy storage system. Single coreless stator and double rotor structures are used to eliminate the idling loss caused by the flux of permanent magnetic machines. A novel compact magnetic bearing is proposed to eliminate the friction loss during high-speed operation.



How to connect flywheel energy storage system (fess) to an AC grid? To connect the Flywheel Energy Storage System (FESS) to an AC grid, another bi-directional converter is necessary. This converter can be single-stage (AC-DC) or double-stage (AC-DC-AC). The power electronic interface has a high power capability, high switching frequency, and high efficiency.



Could flywheels be the future of energy storage? Flywheels, one of the earliest forms of energy storage, could play a significant role in the transformation of the electrical power system into one that is fully sustainable yet low cost.

FLYWHEEL ENERGY STORAGE ELECTRONICS



What are the advantages of flywheel ESS (fess)? Flywheel energy storage systems (FESS) have several advantages, including being eco-friendly, storing energy up to megajoules (MJ), high power density, longer life cycle, higher rate of charge and discharge cycle, and greater efficiency.



Flywheel energy storage systems: A critical review on technologies, applications, and future prospects. Subhashree Choudhury, Corresponding Author power electronics, and bearings have developed the technology of a?



Flywheel energy storage systems (FESS) are a great way to store and use energy. They work by spinning a wheel really fast to store energy, and then slowing it down to release that energy when needed. FESS are perfect a?



Abstract: This article proposed a compact and highly efficient flywheel energy storage system. Single coreless stator and double rotor structures are used to eliminate the idling loss caused a?

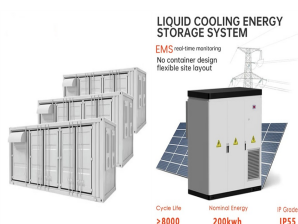


In a flywheel energy storage system, electrical energy is used to spin a flywheel at incredibly high speeds. The flywheel, made of durable materials like composite carbon fiber, stores energy in the form of rotational kinetic energy. a?

FLYWHEEL ENERGY STORAGE ELECTRONICS



In essence, a flywheel stores and releases energy just like a figure skater harnessing and controlling their spinning momentum, offering fast, efficient, and long-lasting energy storage. Components of a Flywheel Energy Storage a?|



The proportion of renewable energy in the power system continues to rise, and its intermittent and uncertain output has had a certain impact on the frequency stability of the grid. a?|



Flywheel energy storage system (FESS) technologies play an important role in power quality improvement. The demand for FESS will increase as FESS can provide numerous benefits as an energy storage solution, a?|



Electrical flywheels are kept spinning at a desired state of charge, and a more useful measure of performance is standby power loss, as opposed to rundown time. Standby power loss can be minimized by means of a good a?|



A flywheel, in essence is a mechanical battery - simply a mass rotating about an axis. Flywheels store energy mechanically in the form of kinetic energy. They take an electrical input to accelerate the rotor up to speed by a?|

FLYWHEEL ENERGY STORAGE ELECTRONICS



Amber Kinetics is a leading designer and manufacturer of long duration flywheel energy storage technology with a growing global customer base and deployment portfolio. Key Amber Kinetics Statistics. 15 . Years. Unsurpassed experience a?|



The topology of the hybrid micro-grid technology can be divided into three stage which are renewable energy power source such solar or wind generator, storage energy system such battery charging system or flywheel a?|