

FLYWHEEL ENERGY STORAGE FLYWHEEL



Modern flywheel energy storage systems generally take the form of a cylinder, known as a rotor, enclosed in a sealed vacuum chamber to eliminate air friction. 2 The rotor is often made from new materials, such as carbon or glass fibers, or Kevlar, which withstand very high speeds better than traditional metals. Velocity can exceed 10,000



Fig. 4 illustrates a schematic representation and architecture of two types of flywheel energy storage unit. A flywheel energy storage unit is a mechanical system designed to store and release energy efficiently. It consists of a high-momentum flywheel, precision bearings, a vacuum or low-pressure enclosure to minimize energy losses due to friction and air resistance, a a?]



The ecological and sustainable energy storage. The ENERGIESTRO flywheel is the ideal storage for large solar power plants in desert areas. The VOSS project has received funding from the European Union's Horizon 2020 research and a a?]

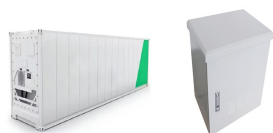


Flywheel Energy Storage (FES) systems refer to the contemporary rotor-flywheels that are being used across many industries to store mechanical or electrical energy. Instead of using large iron wheels and ball bearings, advanced FES systems have rotors made of specialised high-strength materials suspended over frictionless magnetic bearings



The QuinteQ flywheel system is the most advanced flywheel energy storage solution in the world. Based on Boeing's original designs, our compact, lightweight and mobile system is scalable from 100 kW up to several MW and delivers a near endless number of cycles. The system is circular and has a lifetime for over 30 years.

FLYWHEEL ENERGY STORAGE FLYWHEEL



The flywheel is the main energy storage component in the flywheel energy storage system, and it can only achieve high energy storage density when rotating at high speeds. Choosing appropriate flywheel body materials and structural shapes can improve the storage capacity and reliability of the flywheel. At present, there are two main types of



Amber Kinetics is a leading designer and manufacturer of long duration flywheel energy storage technology with a growing global customer base and deployment portfolio. Key Amber Kinetics Statistics. 15 . Years. Unsurpassed experience designing and deploying the world's first long-duration flywheel energy storage systems.



The flywheel energy storage system (FESS) offers a fast dynamic response, high power and energy densities, high efficiency, good reliability, long lifetime and low maintenance requirements, and is particularly suitable for applications where high power for short-time bursts is demanded. FESS is gaining increasing attention and is regarded as a



Flywheel energy storage is a promising technology for replacing conventional lead acid batteries as energy storage systems. Most modern high-speed flywheel energy storage systems (FESS) consist of a huge rotating cylinder supported on a stator (the stationary part of a rotary system) by magnetically levitated bearings.



Flywheel, heavy wheel attached to a rotating shaft so as to smooth out delivery of power from a motor to a machine. The inertia of the flywheel opposes and moderates fluctuations in the speed of the engine and stores the excess energy for intermittent use. To oppose speed fluctuations effectively,



US Patent 5,614,777: Flywheel based energy storage system by Jack Bitterly et al, US Flywheel Systems, March 25, 1997. A compact vehicle flywheel system designed to minimize energy losses. US Patent 6,388,347: Flywheel battery system with active counter-rotating

FLYWHEEL ENERGY STORAGE FLYWHEEL

containment by H. Wayland Blake et al, Trinity Flywheel Power, May 14, 2002. A

FLYWHEEL ENERGY STORAGE FLYWHEEL



FLYWHEEL ENERGY STORAGE FOR ISS Flywheels For Energy Storage a?c Flywheels can store energy kinetically in a high speed rotor and charge and discharge using an electrical motor/generator. IEA Mounts Near Solar Arrays a?c Benefits a?? Flywheels life exceeds 15 years and 90,000 cycles, making them ideal long duration LEO platforms like



The flywheel schematic shown in Fig. 11.1 can be considered as a system in which the flywheel rotor, defining storage, and the motor generator, defining power, are effectively separate machines that can be designed accordingly and matched to the application. This is not unlike pumped hydro or compressed air storage whereas for electrochemical storage, the a?|



converter, energy storage systems (ESSs), flywheel energy storage system (FESS), microgrids (MGs), motor/generator (M/G), renewable energy sources (RESS), stability enhancement 1 | INTRODUCTION These days, the power system is evolving rapidly with the increased number of transmission lines and generation units



The flywheel energy storage operating principle has many parallels with conventional battery-based energy storage. The flywheel goes through three stages during an operational cycle, like all types of energy storage systems: The flywheel speeds up: this is the charging process. Charging is interrupted once the flywheel reaches the maximum



Beacon Power is building the world's largest flywheel energy storage system in Stephentown, New York. The 20-megawatt system marks a milestone in flywheel energy storage technology, as similar systems have only been applied in testing and small-scale applications. The system utilizes 200 carbon fiber flywheels levitated in a vacuum chamber.

FLYWHEEL ENERGY STORAGE FLYWHEEL



The attractive attributes of a flywheel are quick response, high efficiency, longer lifetime, high charging and discharging capacity, high cycle life, high power and energy density, and lower a?]



Flywheel energy storage systems can deliver twice as much frequency regulation for each megawatt of power that they produce, while cutting carbon emissions in half [68,71]. The earliest, but shortest lifespan of a flywheel system reported for frequency regulation using renewables, was installed in Shimane, Japan, in 2003. This 200 kW Ureenco



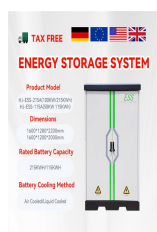
Flywheel energy storage systems are feasible for short-duration applications, which are crucial for the reliability of an electrical grid with large renewable energy penetration. Flywheel energy storage system use is increasing, which has encouraged research in design improvement, performance optimization, and cost analysis.



On a high level, flywheel energy storage systems have two major components: a rotor (i.e., flywheel) and an electric motor. These systems work by having the electric motor accelerate the rotor to high speeds, effectively converting the original electrical energy into a stored form of rotational energy (i.e., angular momentum).



Flywheel Energy Storage System (FESS) Revterra Kinetic Stabilizer Save money, stop outages and interruptions, and overcome grid limitations. Sized to Meet Even the Largest of Projects. Our industrial-scale modules provide 2 MW of power and can store up to 100 kWh of energy each, and can be combined to meet a project of any scale.



Flywheel energy storage systems can be mainly used in the field of electric vehicle charging stations and on-board flywheels. Electric vehicles charging station: The high-power charging and discharging of electric vehicles is a high-power pulse load for the power grid, and sudden access

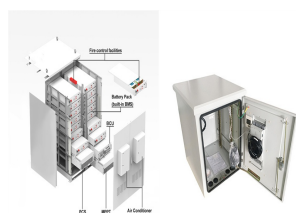
FLYWHEEL ENERGY STORAGE FLYWHEEL

will cause the voltage drop at the public connection point

FLYWHEEL ENERGY STORAGE FLYWHEEL



Today, flywheel energy storage systems are used for ride-through energy for a variety of demanding applications surpassing chemical batteries. A flywheel system stores energy mechanically in the form of kinetic energy by spinning a mass at high speed. Electrical inputs spin the flywheel rotor and keep it spinning until called upon to release



Flywheel energy storage (FES) is a technology that stores kinetic energy through rotational motion. The stored energy can be used to generate electricity when needed. Flywheels have been used for centuries, but modern FES systems use advanced materials and design techniques to achieve higher efficiency, longer life, and lower maintenance costs.



Energy storage flywheel systems are mechanical devices that typically utilize an electrical machine (motor/generator unit) to convert electrical energy in mechanical energy and vice versa. Energy is stored in a fast-rotating mass known as the flywheel rotor. The rotor is subject to high centripetal forces requiring careful design, analysis, and fabrication to ensure the safe a?|



Flywheel is one of the oldest storage energy devices and it has several benefits. Flywheel Energy Storage System (FESS) can be applied from very small micro-satellites to huge power networks. A comprehensive review of FESS for hybrid vehicle, railway, wind power system, hybrid power generation system, power network, marine, space and other



FLYWHEEL ENERGY STORAGE FLYWHEEL



Thanks to the unique advantages such as long life cycles, high power density and quality, and minimal environmental impact, the flywheel/kinetic energy storage system (FESS) is gaining steam recently.



In this paper, state-of-the-art and future opportunities for flywheel energy storage systems are reviewed. The FESS technology is an interdisciplinary, complex subject that a?



A flywheel energy storage system employed by NASA (Reference: wikipedia) How Flywheel Energy Storage Systems Work? Flywheel energy storage systems employ kinetic energy stored in a rotating mass to store energy with minimal frictional losses. An integrated motora??generator uses electric energy to propel the mass to speed. Using the same



OXTO will install an 800kW flywheel energy storage system for a tea manufacturing company in Kenya. The OXTO flywheel will operate as UPS system by covering both power and voltage fluctuation and diesel genset trips to increase productivity. The system will also create power system stability and enable less diesel fuel consumption.