

FLYWHEEL ENERGY STORAGE ROTOR BEARING MODEL



What is a flywheel energy storage system (fess)? Flywheel Energy Storage Systems (FESS) play an important role in the energy storage business. Its ability to cycle and deliver high power, as well as, high power gradients makes them superior for storage applications such as frequency regulation, voltage support and power firming [,,].



How efficient are flywheel energy storage systems? Flywheel energy storage systems, unlike chemical batteries of around 75% efficiency, have the potential of much higher cycle-life and round-trip efficiency (RTE), without recycling battery chemicals at life-end. Determination of RTE of a storage system requires multidiscipline system modeling and simulations.



What is a 7 ring flywheel energy storage system? In 1999, the University of Texas at Austin developed a 7-ring interference assembled composite material flywheel energy storage system and provided a stress distribution calculation method for the flywheel energy storage system.



How much energy can a flywheel store? The small energy storage composite flywheel of American company Powerthu can operate at 53000 rpm and store 0.53 kWh of energy. The superconducting flywheel energy storage system developed by the Japan Railway Technology Research Institute has a rotational speed of 6000 rpm and a single unit energy storage capacity of 100 kWh.



Are flywheel-based hybrid energy storage systems based on compressed air energy storage? While many papers compare different ESS technologies, only a few research, studies design and control flywheel-based hybrid energy storage systems. Recently, Zhang et al. present a hybrid energy storage system based on compressed air energy storage and FESS.

FLYWHEEL ENERGY STORAGE ROTOR BEARING MODEL



What is a flywheel energy storage unit? The German company Piller has launched a flywheel energy storage unit for dynamic UPS power systems, with a power of 3 MW and energy storage of 60 MJ. It uses a high-quality metal flywheel and a high-power synchronous excitation motor.



Developing of 100Kg-class flywheel energy storage system (FESS) with permanent magnetic bearing (PMB) and spiral groove bearing (SGB) brings a great challenge in the aspect of low-frequency vibration suppression, bearing and the dynamic modelling and analysis of flywheel rotor-bearing system. The parallel support structure of PMB and upper damper is developed to ???



A compact and efficient flywheel energy storage system is proposed in this paper. The system is assisted by integrated mechanical and magnetic bearings, the flywheel acts as the rotor of the drive system and is sandwiched between two disk type stators to save space. The combined use of active magnetic bearings, mechanical bearings and axial flux permanent ???



A compact and efficient flywheel energy storage system is proposed in this paper. The system is assisted by integrated mechanical and magnetic bearings, the flywheel acts as the rotor of the drive



In the field of flywheel energy storage systems, only two bearing concepts have been established to date: 1. Rolling bearings, spindle bearings of the 'High Precision Series' are usually used here.. 2. Active magnetic bearings, usually so-called HTS (high-temperature superconducting) magnetic bearings.. A typical structure consisting of rolling ???

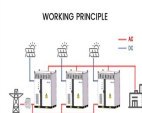
FLYWHEEL ENERGY STORAGE ROTOR BEARING MODEL



Energy storage flywheel systems are mechanical devices that typically utilize an electrical machine (motor/generator unit) to convert electrical energy in mechanical energy and vice versa. Energy is stored in a fast-rotating mass known as the flywheel rotor. The rotor is subject to high centripetal forces requiring careful design, analysis, and fabrication to ensure the safe ???



Flywheel is a rotating mechanical device used to store kinetic energy. It usually has a significant rotating inertia, and thus resists a sudden change in the rotational speed (Bitterly 1998; Bolund et al. 2007). With the increasing problem in environment and energy, flywheel energy storage, as a special type of mechanical energy storage technology, has extensive ???



In supporting the stable operation of high-penetration renewable energy grids, flywheel energy storage systems undergo frequent charge???discharge cycles, resulting in significant stress fluctuations in the rotor core. This paper investigates the fatigue life of flywheel energy storage rotors fabricated from 30Cr2Ni4MoV alloy steel, attempting to elucidate the ???



procedure of obtaining an accurate rotor model of a large flywheel energy storage system using finite-element method. The system is designed to store 5kWh at maximum speed of 18,000 rpm. The model can predict the first and the second bending mode which match well with the experimental results obtained from a prototype flywheel energy storage



backup bearings: the radial rotor displacement is limited by Delrin bushings at upper and lower rotor sections; Flywheel energy storage controlled by model predictive control to achieve smooth short-term high-frequency wind power. J Energy Storage, 2352-152X, 63 (2023)

FLYWHEEL ENERGY STORAGE ROTOR BEARING MODEL



A flywheel energy storage system (FESS) with a permanent magnet bearing (PMB) and a pair of hybrid ceramic ball bearings is de-veloped. A flexibility design is established for the flywheel ???



method for magnetic suspended flywheel energy storage system. Modeling of the rotor???bearing system In this section, the mathematical model of a magnetic suspended flywheel energy storage rotor



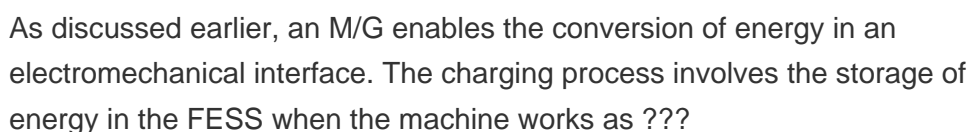
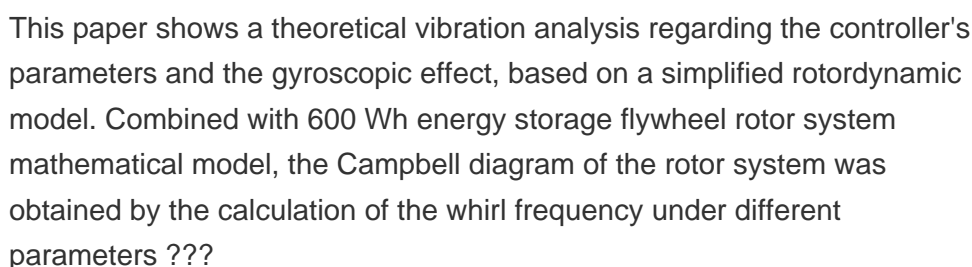
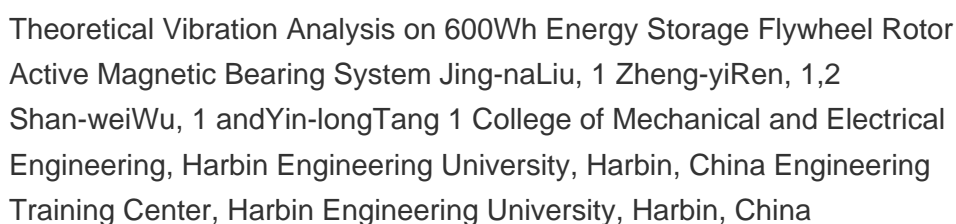
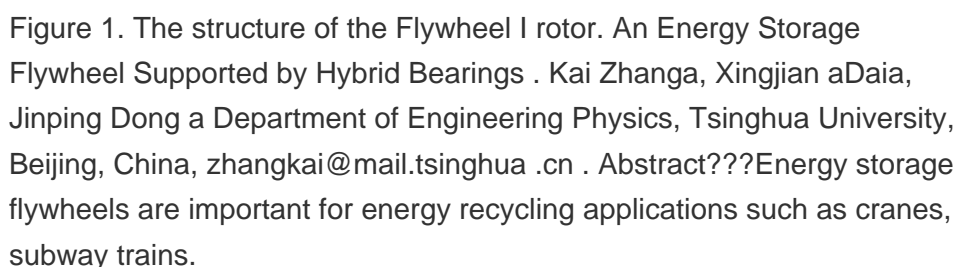
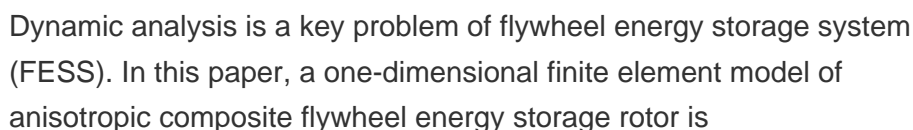
Fig. 4 illustrates a schematic representation and architecture of two types of flywheel energy storage unit. A flywheel energy storage unit is a mechanical system designed to store and release energy efficiently. It consists of a high-momentum flywheel, precision bearings, a vacuum or low-pressure enclosure to minimize energy losses due to friction and air resistance, a ???



MODEL 2.1 Flywheel energy storage system overview The system under consideration is a Flywheel Uninter- Once the coordinate framework is de ned, the rotor and bearing dynamics are represented. The rotor dynamics of a simple gyroscopic beam can be represented by the Newton-Euler equations of motion [7]:



The flywheel rotor is the energy storage part of FESS, and the stored electrical energy E (J) can be expressed as: (1) Rotor optimization in a superconducting magnetic bearing by using frozen image model and amperian current approximation. Cryogenics (Guildf) (2019), 10.1016/j.cryogenics.2019.01.002. Google Scholar



FLYWHEEL ENERGY STORAGE ROTOR BEARING MODEL



The Flywheel rotor is the heart of the flywheel energy storage system, storing and releasing energy. There are three types of magnetic bearings in a Flywheel Energy Storage System (FESS): passive, active, and superconducting. Passive magnetic bearings (PMB) use permanent magnets to support some or all of the flywheel's weight. Active



Abstract: Developing of 100Kg-class flywheel energy storage system (FESS) with permanent magnetic bearing (PMB) and spiral groove bearing (SGB) brings a great challenge in the ???



rotor levitated in a noncontact condition by a superconducting magnetic bearing. In a series of tests on the system model, the rotor attained a rated operating speed of 30,000 rpm in the condition of completely noncontact magnetic levitation. At the rated speed of 30,000 rpm, the rotor gave the system an energy storage capacity of 0.5 kWh [1].

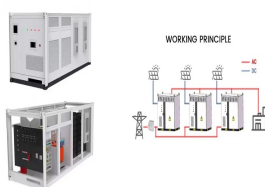


bearings, and the machine losses (copper and iron losses) are considered for calculation of RTE. Figure 1. Flywheel Energy Storage System Layout 2. FLYWHEEL ENERGY STORAGE SYSTEM The layout of 10 kWh, 36 krpm FESS is shown in Fig(1). A 2.5kW, 24 krpm, Surface Mounted Permanent Magnet Motor is suitable for 10kWh storage having



of FES technology is presented including energy storage and attitude control in satellite, high-power uninterrupted power supply (UPS), electric vehicle (EV), power quality problem. Keywords: flywheel energy storage; rotor; magnetic bearing; UPS; power quality problem. 1. INTRODUCTION The idea of storing energy in a rotating wheel has been

FLYWHEEL ENERGY STORAGE ROTOR BEARING MODEL



Shape optimization of energy storage flywheel rotor L. Jiang 1 & W. Zhang 1 & G. J. Ma 1 & C. W. Wu 1 Received: 21 January 2016/Revised: 13 March 2016/Accepted: 9 June 2016/Published online: 17



Active magnetic bearings and superconducting magnetic bearings were used on a high-speed flywheel energy storage system; however, their wide industrial acceptance is still a challenging task because of the complexity in designing the elaborate active control system and the difficulty in satisfying the cryogenic condition. A hybrid bearing consisting of a permanent ???



An overview of system components for a flywheel energy storage system. Fig. 2. A typical flywheel energy storage system [11], which includes a flywheel/rotor, an electric machine, bearings, and power electronics. Fig. 3. The Beacon Power Flywheel [12], which includes a composite rotor and an electric machine, is designed for frequency



The force analysis model of flywheel rotor Research on High Energy Storage Flywheel Rotor and Magnetic Bearing Technology Development of superconducting magnetic bearing for flywheel energy storage system. Cryogenics, 80 (2016), pp. 234-237, 10.1016/j.cryogenics.2016.05.011.



Flywheel energy storage systems have gained increased popularity as a method of environmentally friendly energy storage. Fly wheels store energy in mechanical rotational energy to be then