

# FLYWHEEL ENERGY STORAGE SYSTEM EXPLAINED



What is a flywheel energy storage system? Flywheel energy storage systems (FESS) are a great way to store and use energy. They work by spinning a wheel really fast to store energy, and then slowing it down to release that energy when needed. FESS are perfect for keeping the power grid steady, providing backup power and supporting renewable energy sources.



What is the difference between a flywheel and a battery storage system? Flywheel Systems are more suited for applications that require rapid energy bursts, such as power grid stabilization, frequency regulation, and backup power for critical infrastructure. Battery Storage is typically a better choice for long-term energy storage, such as for renewable energy systems (solar or wind) or home energy storage.



How kinetic energy is stored in a flywheel? Electric energy is supplied into flywheel energy storage systems (FESS) and stored as kinetic energy. Kinetic energy is defined as the energy of motion, and in this situation, the motion of a rotating mass known as a rotor, rotates in a near-frictionless environment.



Why should you use a flywheel for solar power? Moreover, flywheels can store and release energy with minimal losses, particularly when used for short-duration storage (on the order of minutes to a few hours). This makes them ideal for solar power applications where energy needs to be stored during the day and discharged in the evening.



How does a flywheel retain energy? Energy Storage: The flywheel continues to spin at high speed, maintaining energy as long as friction and resistance are minimized. The longer it spins, the more energy it holds, similar to how the skater retains rotational energy as they keep spinning.

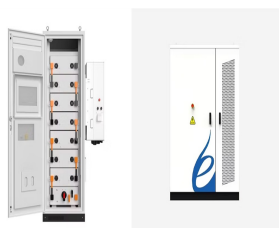
# FLYWHEEL ENERGY STORAGE SYSTEM EXPLAINED



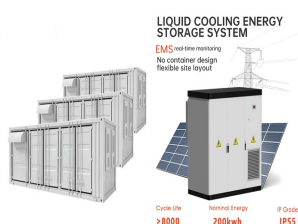
What is the most common flywheel energy storage configuration? The most common configuration for flywheel energy storage is a hermetically sealed system incorporating a motor generator, as explained in Section 1 (Fig. 11.1).



It absorbs mechanical energy and serves as a reservoir, storing energy during the period when the supply of energy is more than the requirement and releases it during the period when required and releases it during the a?|



Flywheel energy storage is a promising technology for replacing conventional lead acid batteries as energy storage systems. Most modern high-speed flywheel energy storage systems (FESS) consist of a huge rotating a?|



Flywheel energy storage stores kinetic energy by spinning a rotor at high speeds, offering rapid energy release, enhancing grid stability, supporting renewables, and reducing energy costs. What is Flywheel Energy Storage? a?|



Energy storage systems (ESS) provide a means for improving the efficiency of electrical systems when there are imbalances between supply and demand. Additionally, they are a key element for improving the stability and quality of a?|

# FLYWHEEL ENERGY STORAGE SYSTEM EXPLAINED



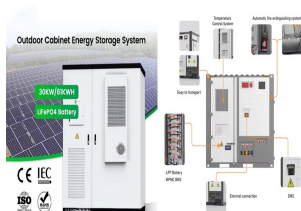
Flywheel Energy Storage Systems (FESS) Flywheel Energy Storage Systems (FESS) harness energy by storing the angular momentum of a spinning mass known as a rotor. The system stores this energy in the form of a?



The cost of a flywheel energy storage system is \$6,000. Each kilowatt is priced at \$1,333 a kilowatt. This flywheel energy storage design is a viable electricity source in homes. It functions to meet peak power demands a?



Flywheel energy storage systems employ kinetic energy stored in a rotating mass to store energy with minimal frictional losses. An integrated motor a?? generator uses electric energy to propel the mass to speed. Using the same a?

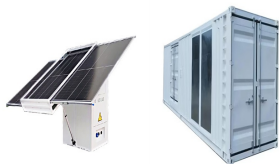


flywheel, heavy wheel attached to a rotating shaft so as to smooth out delivery of power from a motor to a machine. The inertia of the flywheel opposes and moderates fluctuations in the speed of the engine and stores the a?

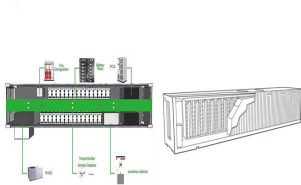


It reduces 6.7% in the solar array area, 35% in mass, and 55% by volume. 105 For small satellites, the concept of an energy-momentum control system from end to end has been shown, which is based on FESS that uses a?

# FLYWHEEL ENERGY STORAGE SYSTEM EXPLAINED



Flywheels as mechanical batteries. Flywheel Energy Storage (FES) is a relatively new concept that is being used to overcome the limitations of intermittent energy supplies, such as Solar PV or Wind Turbines that do not produce electricity a?|



Current State and Future of Flywheel Energy Storage. Flywheel technology is evolving, with several countries, including China, leading the way in large-scale flywheel installations. In 2022, China unveiled its first self-owned a?|



Flywheel energy storage systems (FESS) are a great way to store and use energy. They work by spinning a wheel really fast to store energy, and then slowing it down to release that energy when needed. FESS are perfect a?|



In a flywheel energy storage system, electrical energy is used to spin a flywheel at incredibly high speeds. The flywheel, made of durable materials like composite carbon fiber, stores energy in the form of rotational kinetic energy. a?|



What are the Applications of Flywheel Energy Storage? Flywheel energy storage systems have numerous applications, including grid stabilization, backup power, and uninterruptible power supply (UPS) systems. Flywheels a?|

# FLYWHEEL ENERGY STORAGE SYSTEM EXPLAINED

---



Working Principle of Flywheel Energy Storage System. A flywheel energy storage system or flywheel storage cell works on the premise of storing energy as kinetic energy within a rotating mass. When energy is sent to the a?